



TSXV: NAR

North Arrow

MINERALS INC.

**Pikoo Diamond Project
Path to Continued Discovery**

March 2020



CAUTIONARY STATEMENT

North Arrow

MINERALS INC.

**Forward
Looking
Information**

This presentation contains projections and forward looking information that involve various risks and uncertainties, including, without limitation, statements regarding the potential extent of mineralization, resources, reserves, exploration results and plans and objectives of North Arrow Minerals Inc. These risks and uncertainties include, but are not restricted to, the amount of geological data available, the uncertain reliability of drilling results and geophysical and geological data and the interpretation thereof and the need for adequate financing for future exploration and development efforts. There can be no assurance that such statements will prove to be accurate. Actual results and future events could differ materially from those anticipated in such statements. These and all subsequent written and oral forward-looking statements are based on the estimates and opinions of management on the dates they are made and are expressly qualified in their entirety by this notice. The Company assumes no obligation to update forward looking statements should circumstances or management's estimates or opinions change.

**Qualified
Person under
NI 43-101**

Disclosure of a scientific or technical nature related to North Arrow's projects in this presentation has been reviewed and approved by Ken Armstrong, P.Geo. President and CEO of North Arrow and a Qualified Person under NI 43-101.



CORPORATE OVERVIEW – PROJECTS

North Arrow

MINERALS INC.

Advanced Stage

Assessing a known kimberlite or diamond deposit

- 1. Naujaat (100%) *Significant diamond inventory; potential value upside: fancy orange-yellow diamonds*

Discovery Stage

Next stage of diamond exploration could lead to discovery

- 2. Mel (100%) *Kimberlite Field discovery*
- 3. Loki (100%) *Kimberlite 465 discovered 2018; 1st Lac de Gras discovery in > 5 years*
- 4. LDGJV (Dominion) *Kimberlite discovery in 2019*
- 5. Pikoo (100%) *Kimberlite Field discovery*
- 6. Luxx (100%) *Permitted & drill ready*

Grassroots

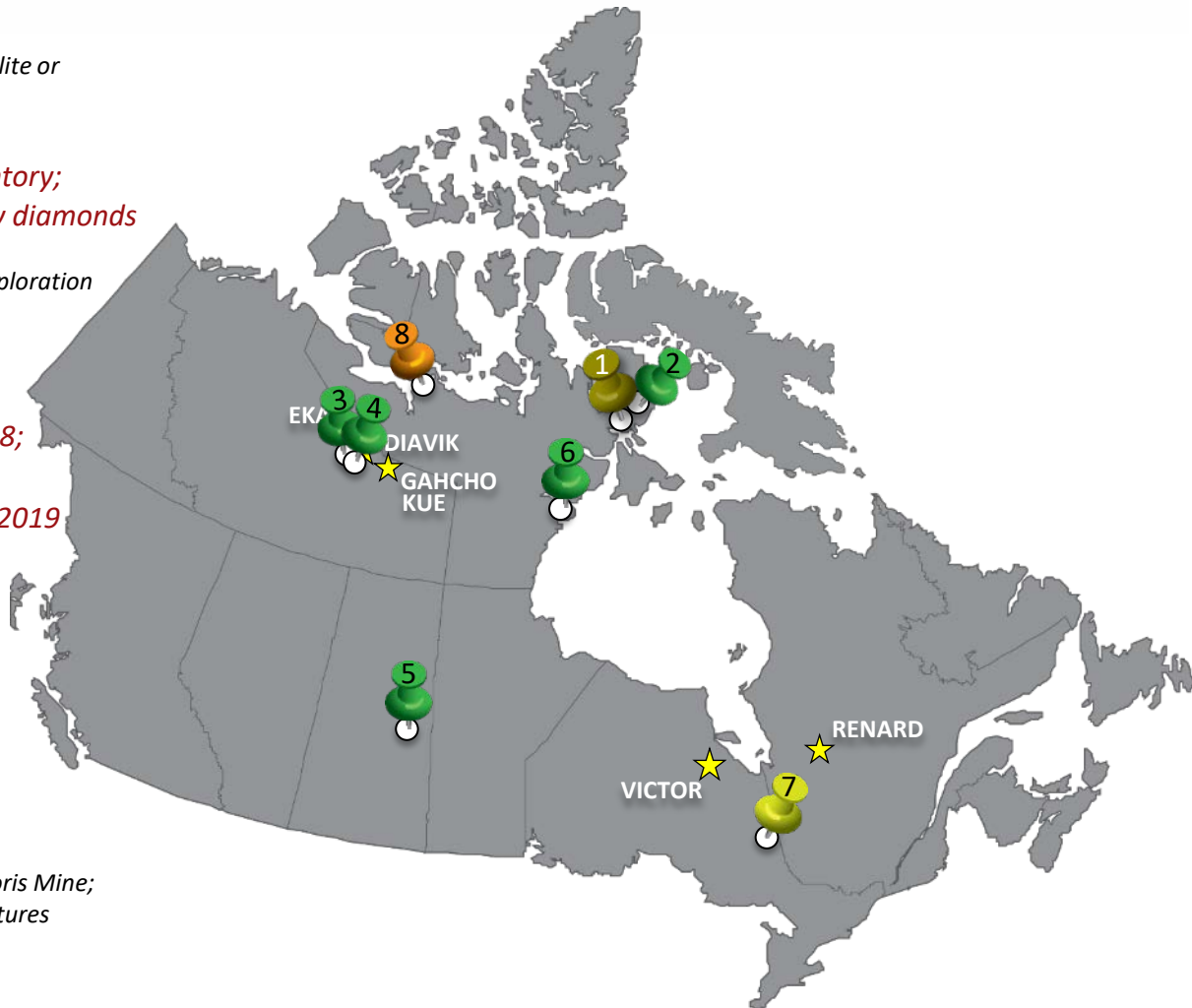
Target development

- 7. Timiskaming (JV w SWY)

Brownfields Gold

Within 3km of TMAC's Doris Mine; similar geology and structures

- 8. Hope Bay (100%)





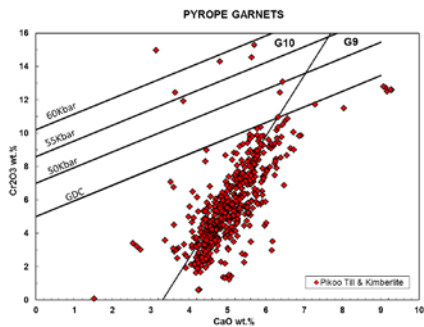
North Arrow

MINERALS INC.

Discovery Stage

Next stage of diamond exploration could lead to discovery

5. Pikoo (100%) Kimberlite Field discovered by North Arrow



Excellent diamond potential





North Arrow
MINERALS INC.

A tired project???





...Or poised for renewed discovery?





PIKOO PROJECT, SK

North Arrow

MINERALS INC.

- North Arrow (100%)
- Excellent Jurisdiction
- Good local infrastructure; within 10 km of SK Hwy 911– more than 200 km from nearest kimberlite field (FALC)
- 10 discrete kimberlites discovered to date. Five tested and proven diamondiferous
- PK150 – most significant diamond discovery; 1,232 diamonds > 0.106 mm from 531 kg
- More unique unsourced KIM trains and drill targets



+0.85 mm stones recovered from PK 150

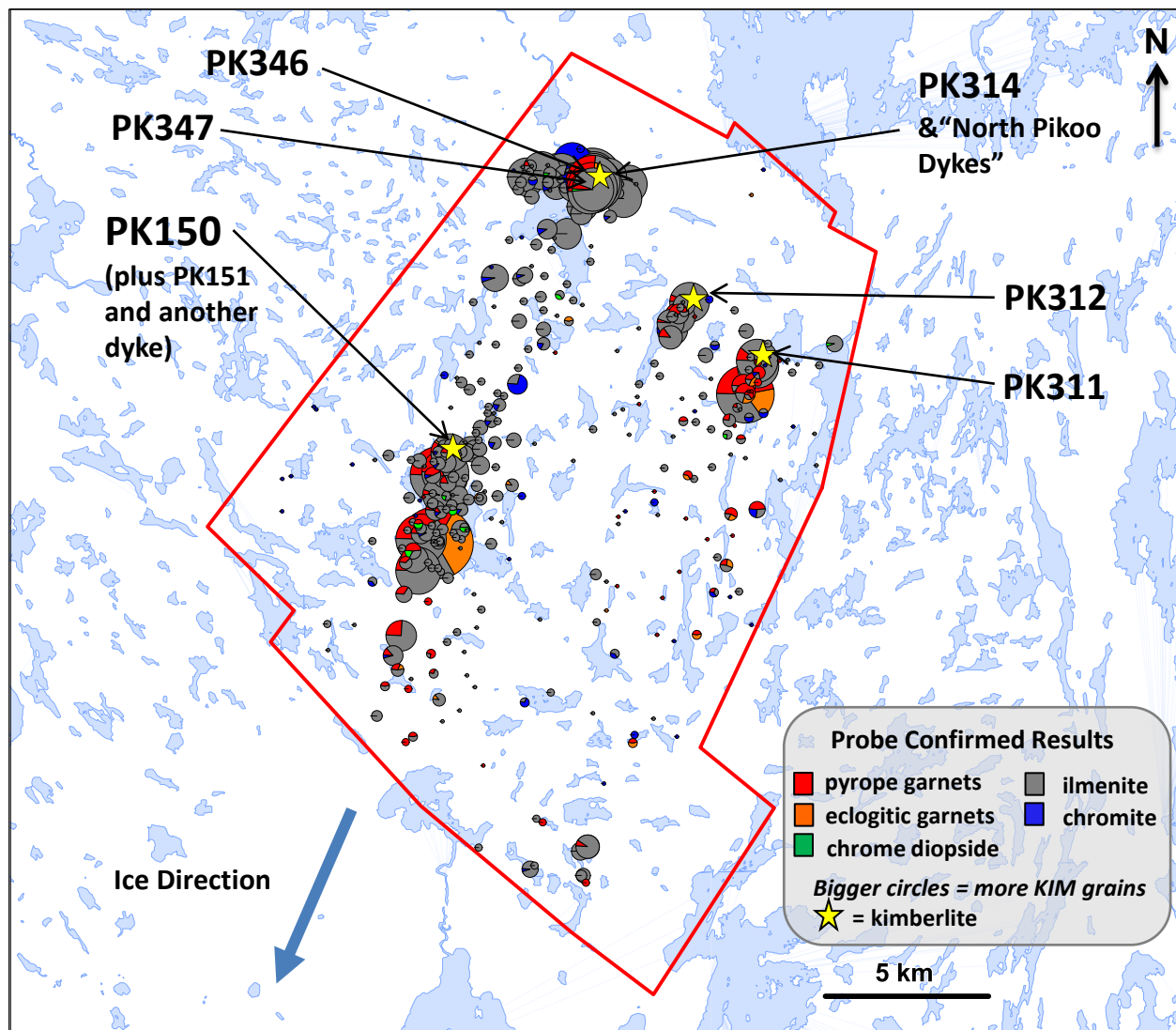


PIKOO PROJECT – EXPLORATION TO PRESENT

North Arrow

MINERALS INC.

- Till sampling works (>1200 tills collected); five discrete KIM train areas.
- Positive samples range from 1 to 100's of KIM grains.
- Excellent chemistry - kimberlite indicator minerals are probe-confirmed as derived from diamond stable mantle.
- PK150, PK311, PK312, PK314, PK346 & PK347 kimberlites discovered through ground geophysics and diamond drilling – all kimberlites tested (5) have proven diamondiferous.

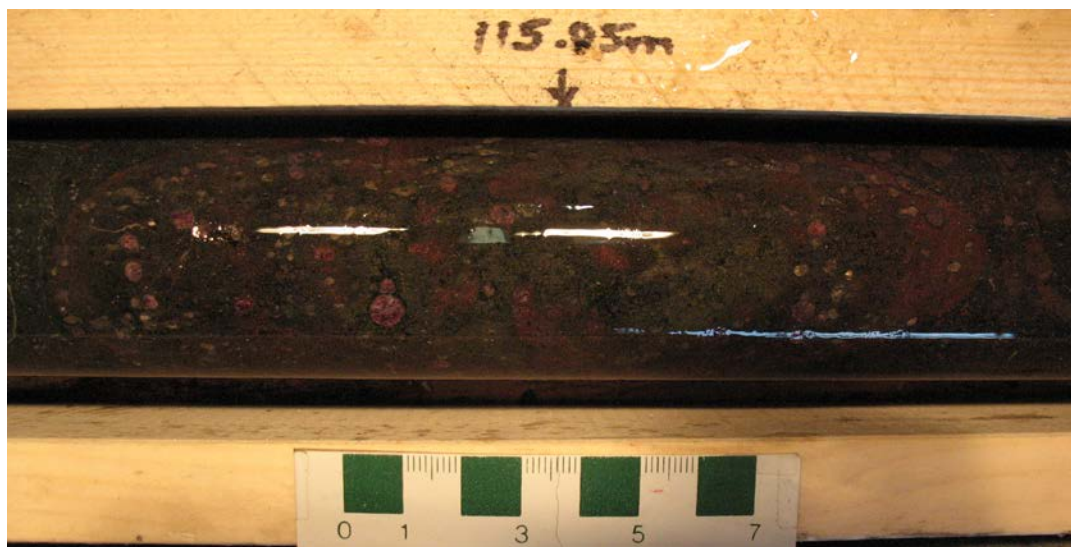
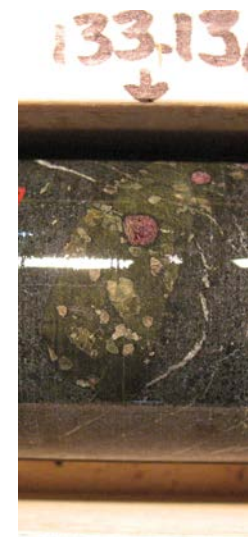
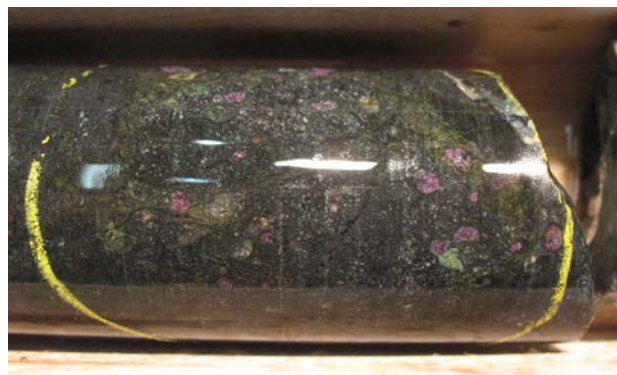
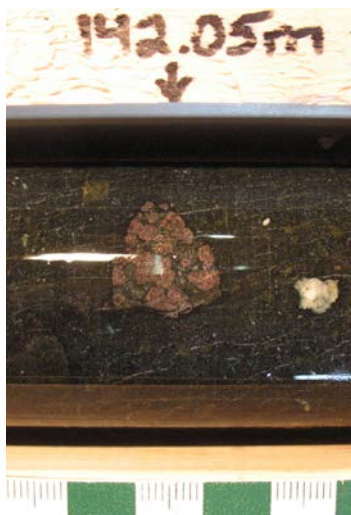




PIKOO KIMBERLITES – MANTLE SAMPLE

North Arrow

MINERALS INC.



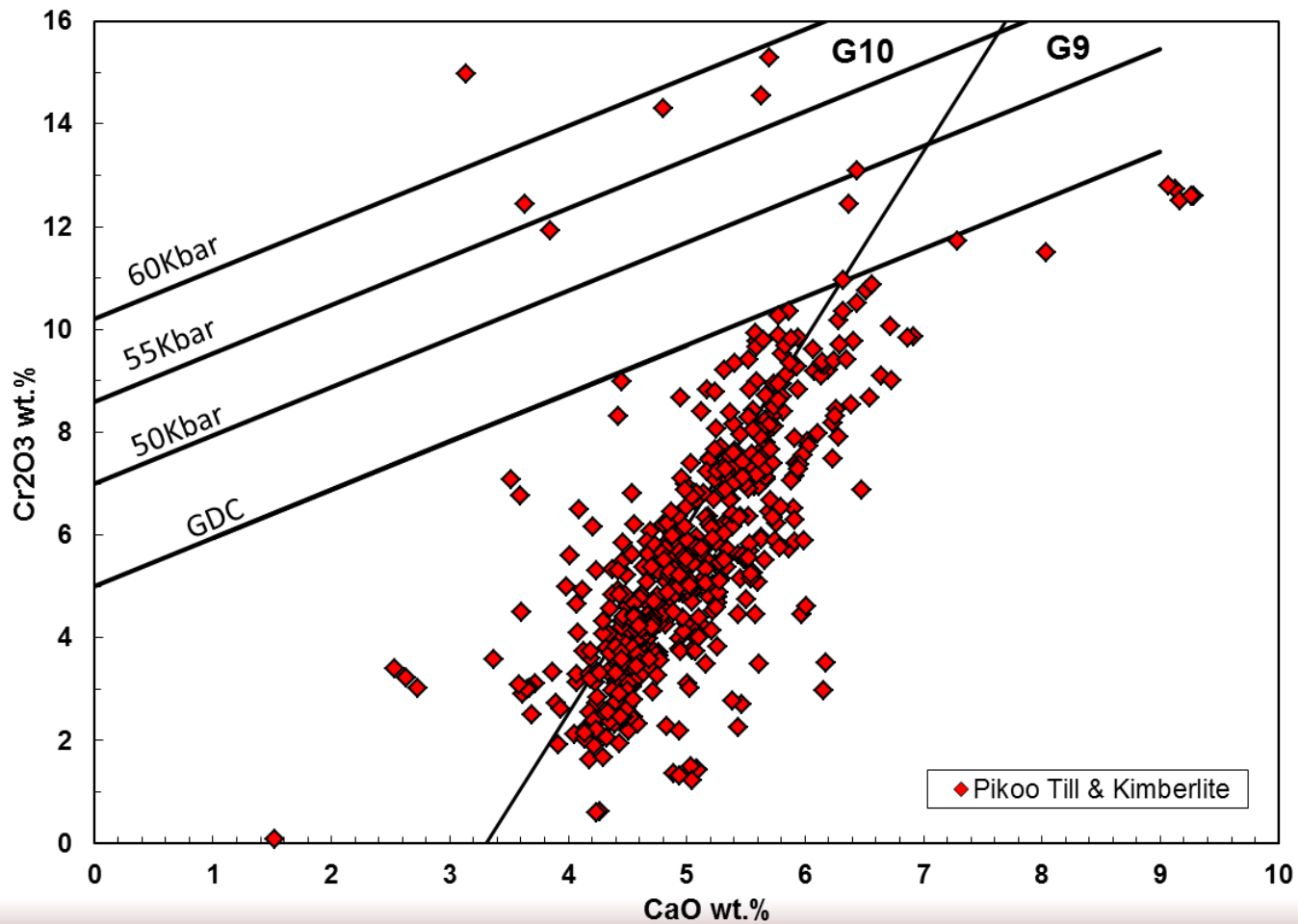


PIKOO PYROPE GARNET CHEMISTRY

North Arrow

MINERALS INC.

PYROPE GARNETS





PK150 Diamond Results

North Arrow

MINERALS INC.

- 209.7 kg sample from drill core
- 745 diamonds > 0.106 mm
- 23 diamonds > 0.85 mm
- Total Carats >+0.85mm = 0.2815
- > 95% of diamonds are intact, white octahedrons or aggregates



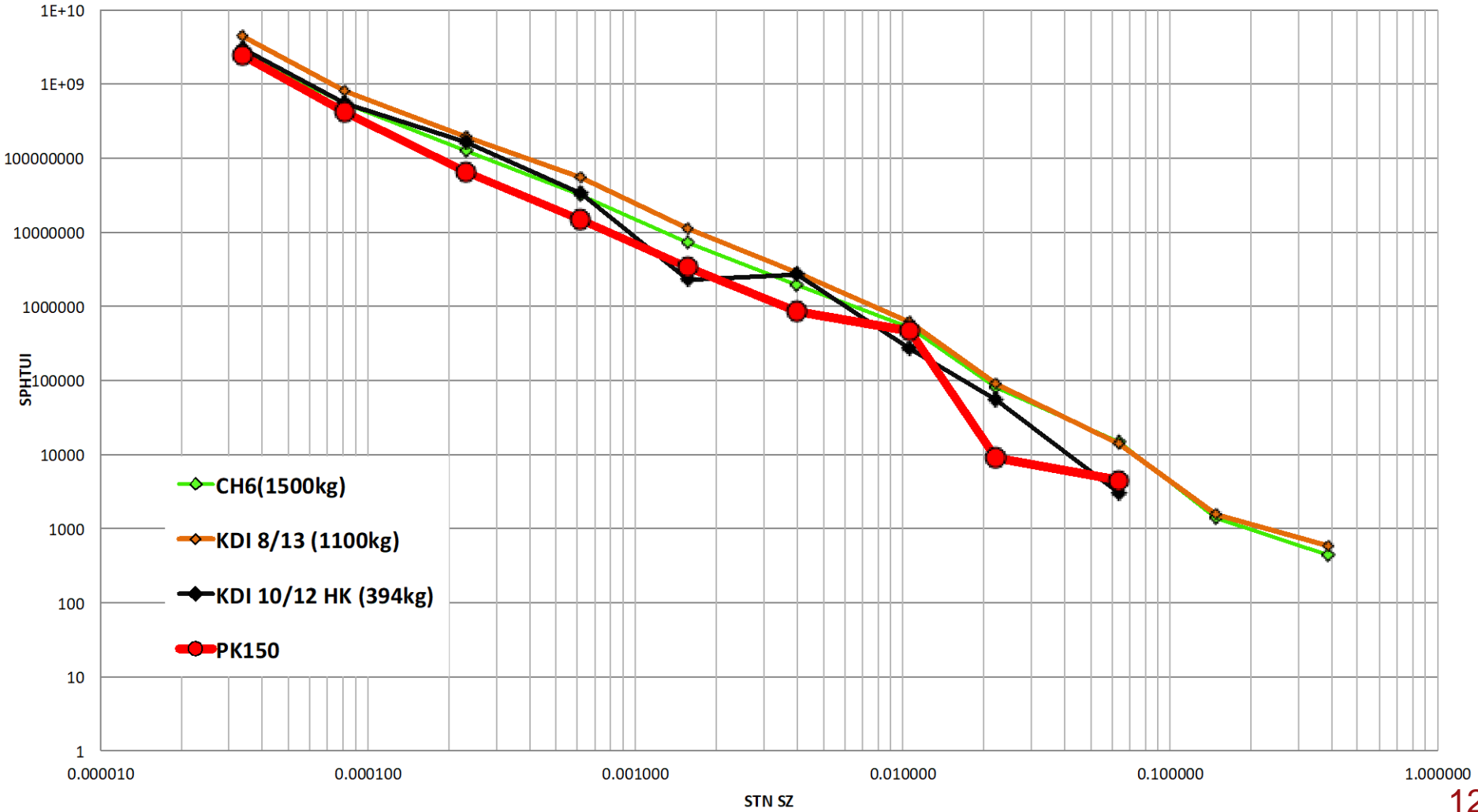
	Number of Diamonds per Sieve Size (mm Square Mesh Sieve)											
Sample Weight Dry Kg	+0.106 -0.150	+0.150 -0.212	+0.212 -0.300	+0.300 -0.425	+0.425 -0.600	+0.600 -0.850	+0.850 -1.18	+1.18 -1.70	+1.70 -2.36	Total Stones	Total Carats +0.85mm	
209.7	392	199	65	27	19	20	21	1	1	745	0.2815	



PK 150 – MICRODIAMOND RESULTS

North Arrow
MINERALS INC.

Compares well with two kimberlites currently slated for development

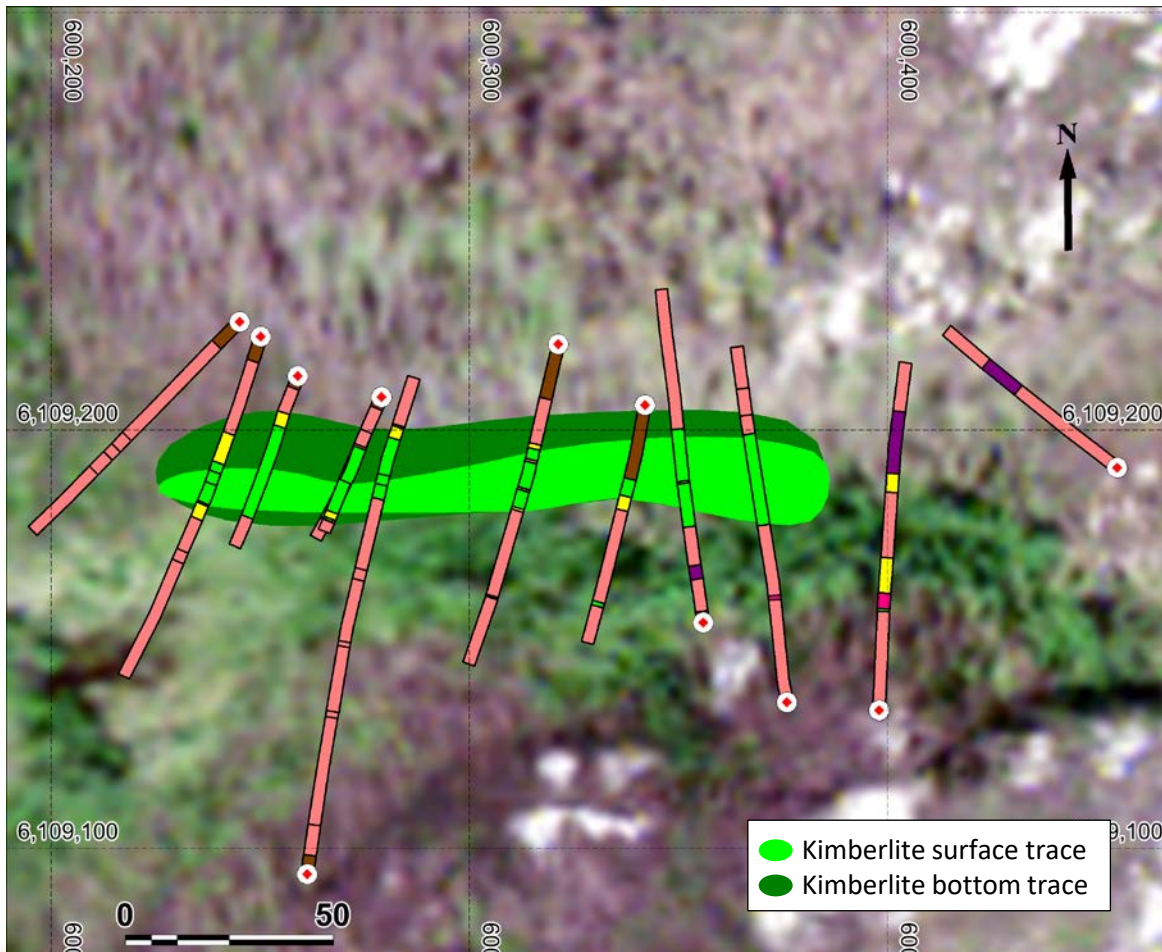
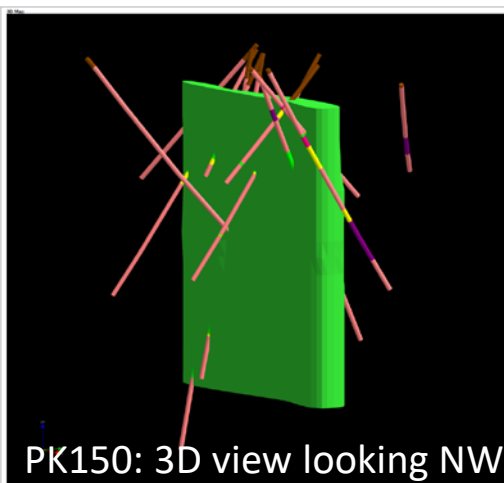
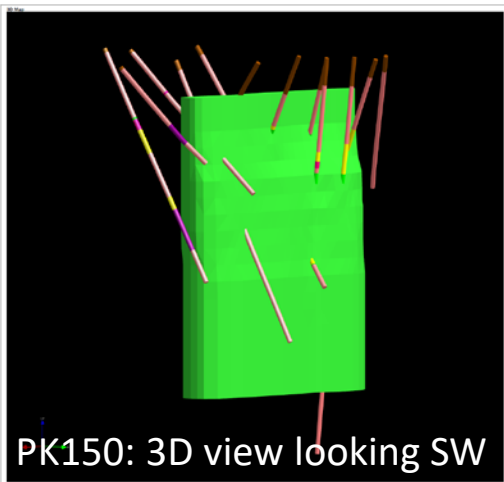




2013-2016 DRILLING – PK150 CURRENT MODEL

North Arrow
MINERALS INC.

- Near vertical body modelled down to 200 m below surface
- Expands gradually at depth



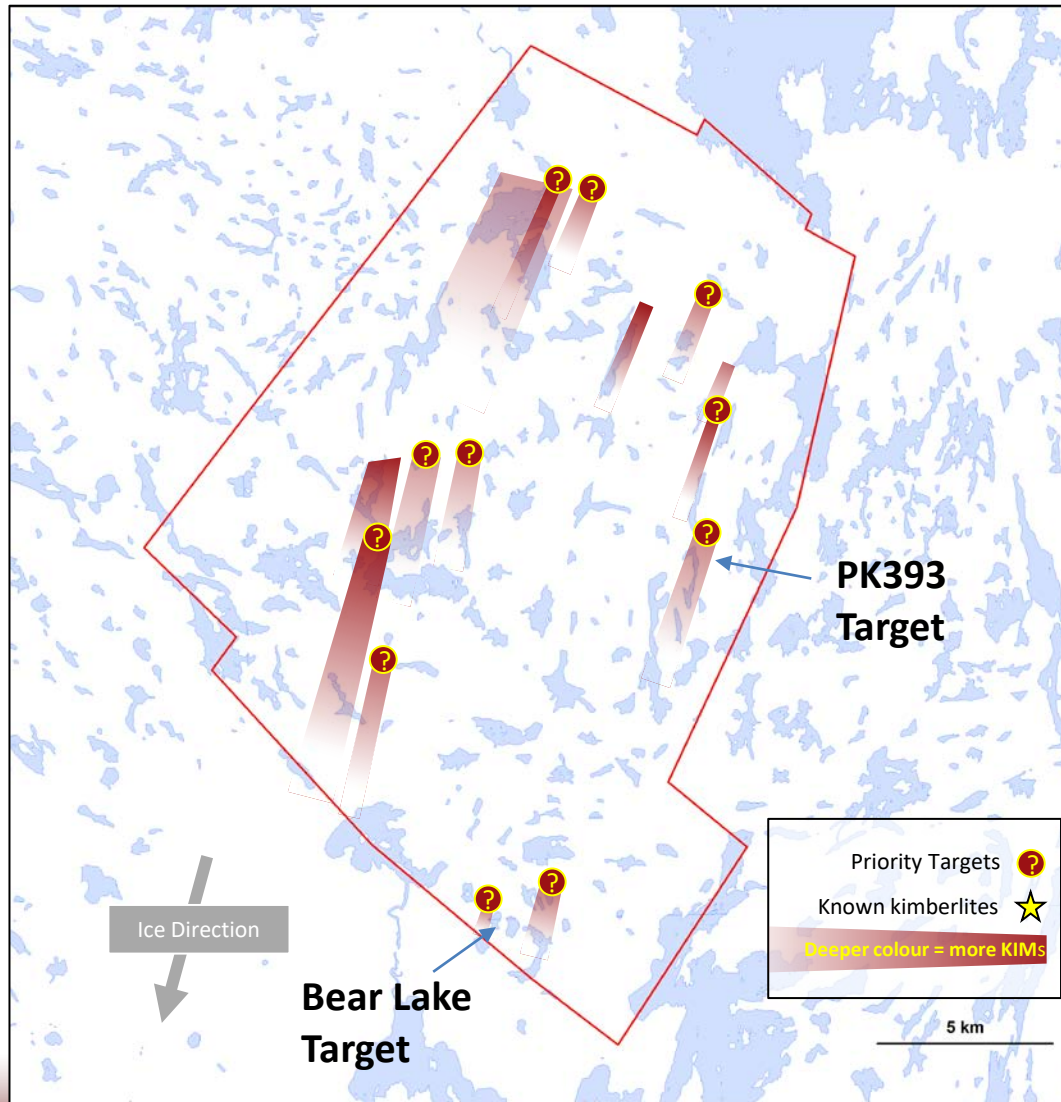
PK150 plan view with 2013-2016 drilling



PIKOO PROJECT – DISTINCT INDICATOR TRAINS

North Arrow

MINERALS INC.





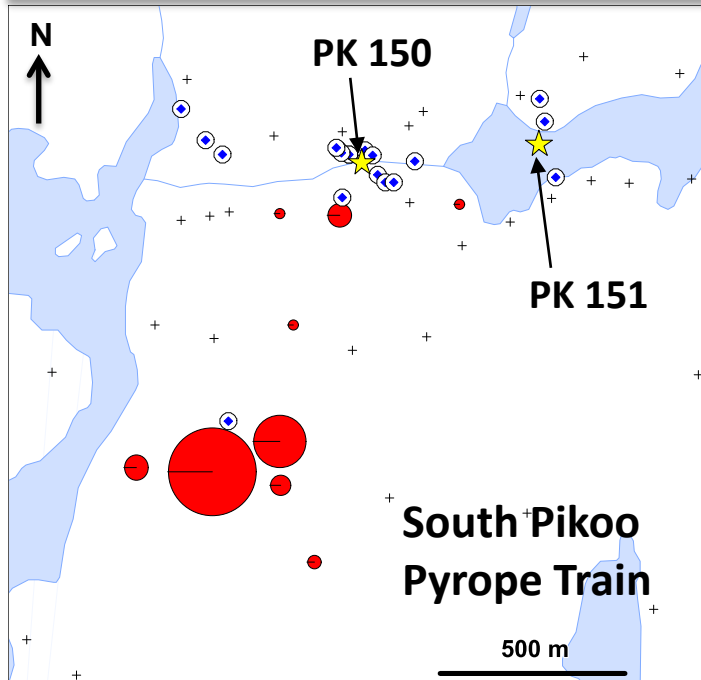
KIM COUNT COMPARISONS – KIMBERLITE VS. TILL

North Arrow

MINERALS INC.



PK 150 core

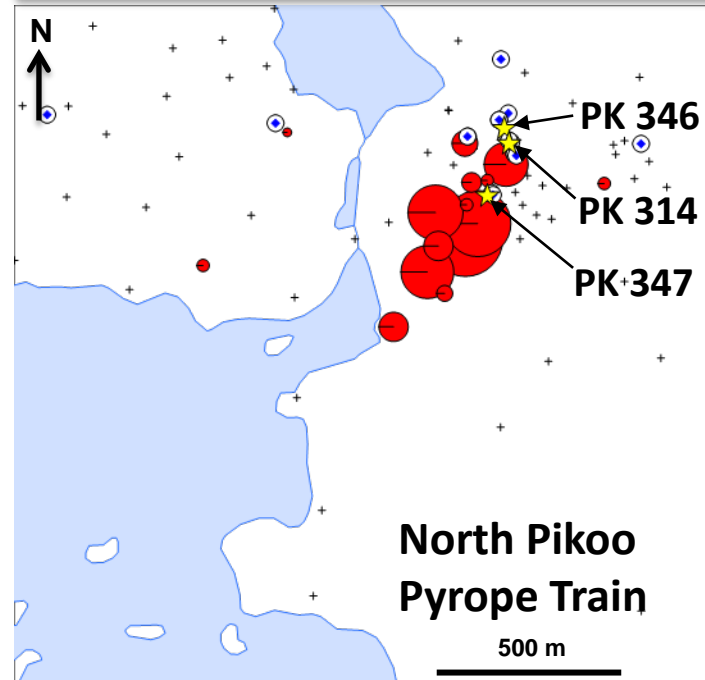


PK150:
 >800 pyropes / kg
 kimberlite;
 PK150 Tills:
 16 pyropes / sample
 (1-20 grains)

North Pikoo Tills:
 16 pyropes / sample
 (1-40 grains)
 Kimberlites:
 <10 pyropes / kg



PK 346 core



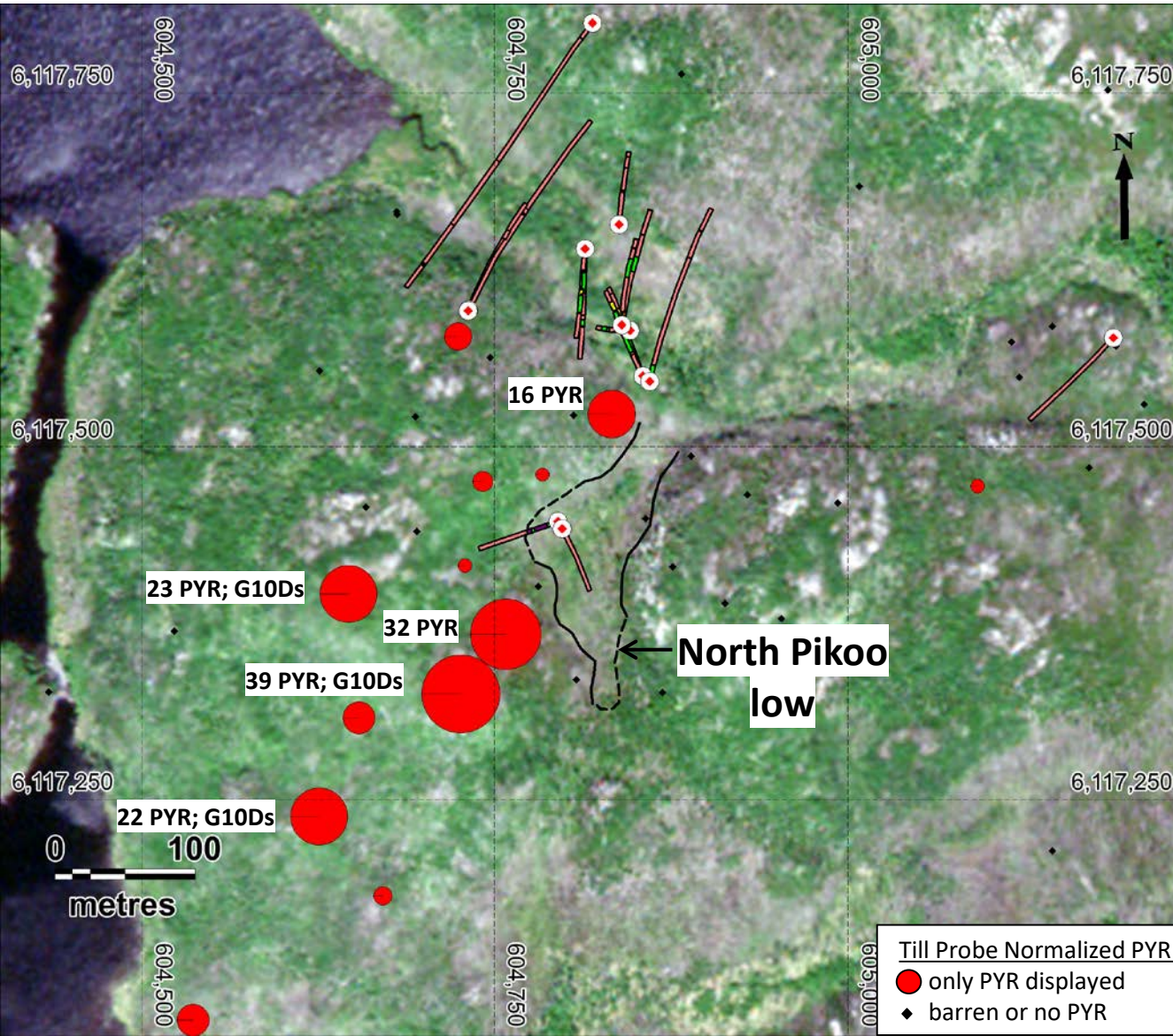
Must be an undiscovered kimberlite source with good mantle sample at North Pikoo!



NORTH PIKOO – UNSOURCED PYROPE TILL TRAIN

North Arrow

MINERALS INC.



North Pikoo low target:

- in a topo low which cross cuts magnetic high amphibolite ridge
- Connects to kimberlite hosted E-W trending structural low valley
- up-ice of positive probe confirmed PYR's from tills – including G10D's

Minimum 3 DDH proposed: test North Pikoo low and connecting E-W valley

Till Probe Normalized PYR:

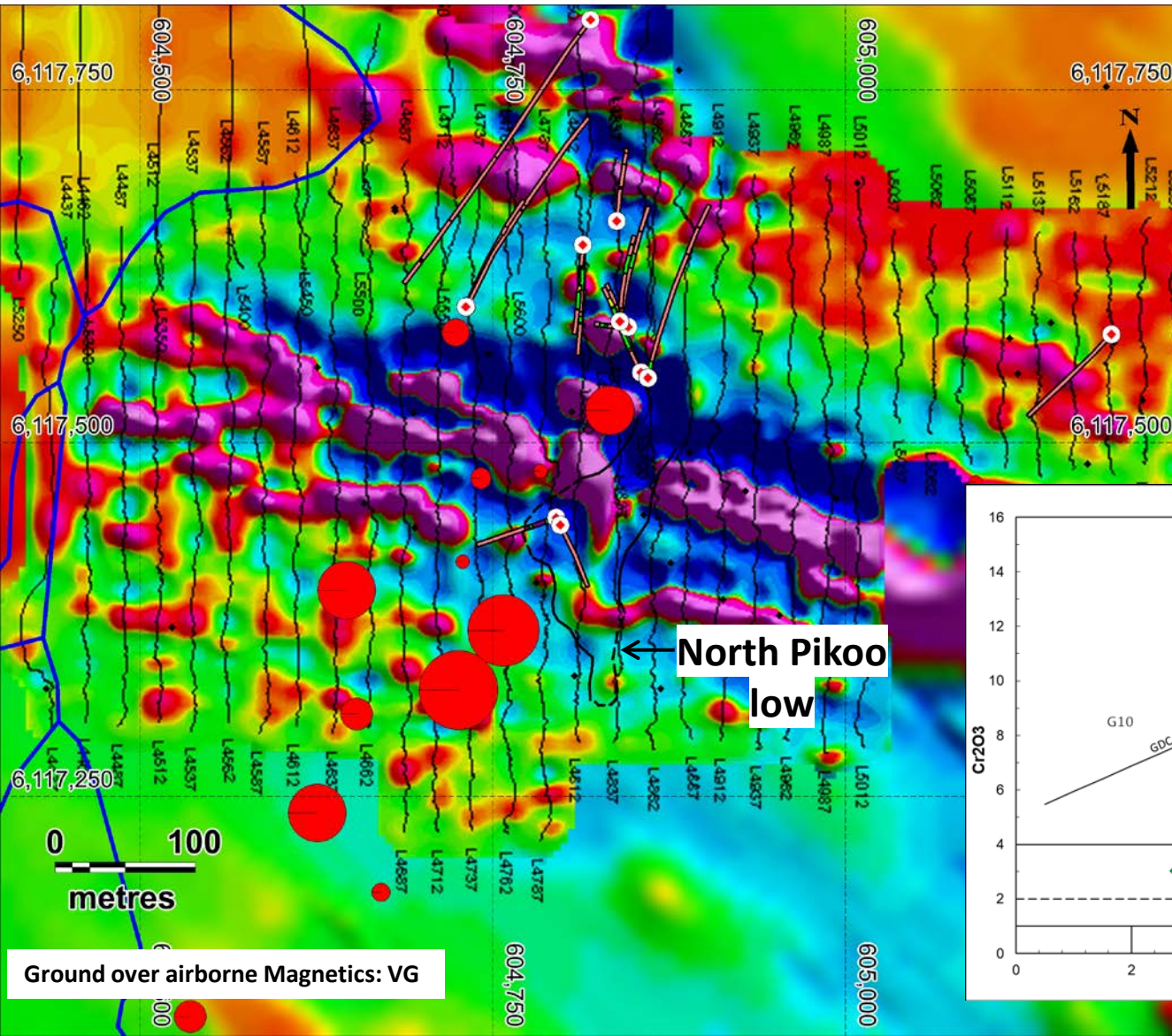
- only PYR displayed
- ◆ barren or no PYR



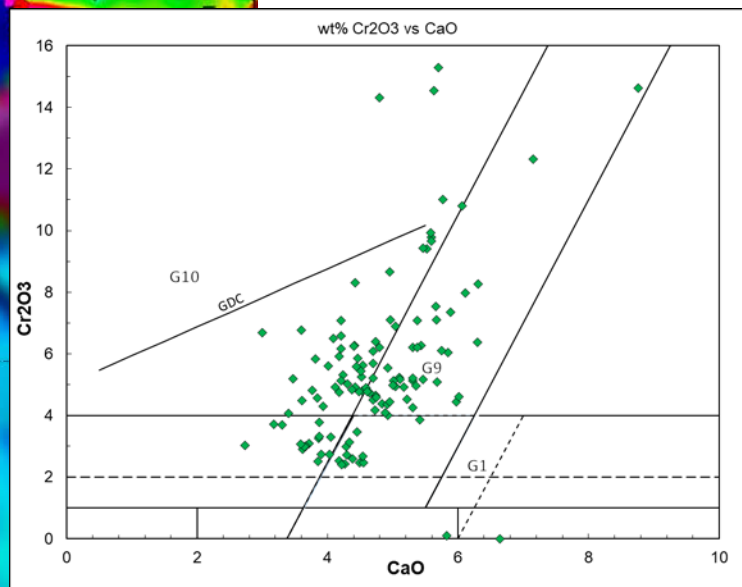
NORTH PIKOO – UNSOURCED PYROPE TILL TRAIN

North Arrow

MINERALS INC.



Garnet

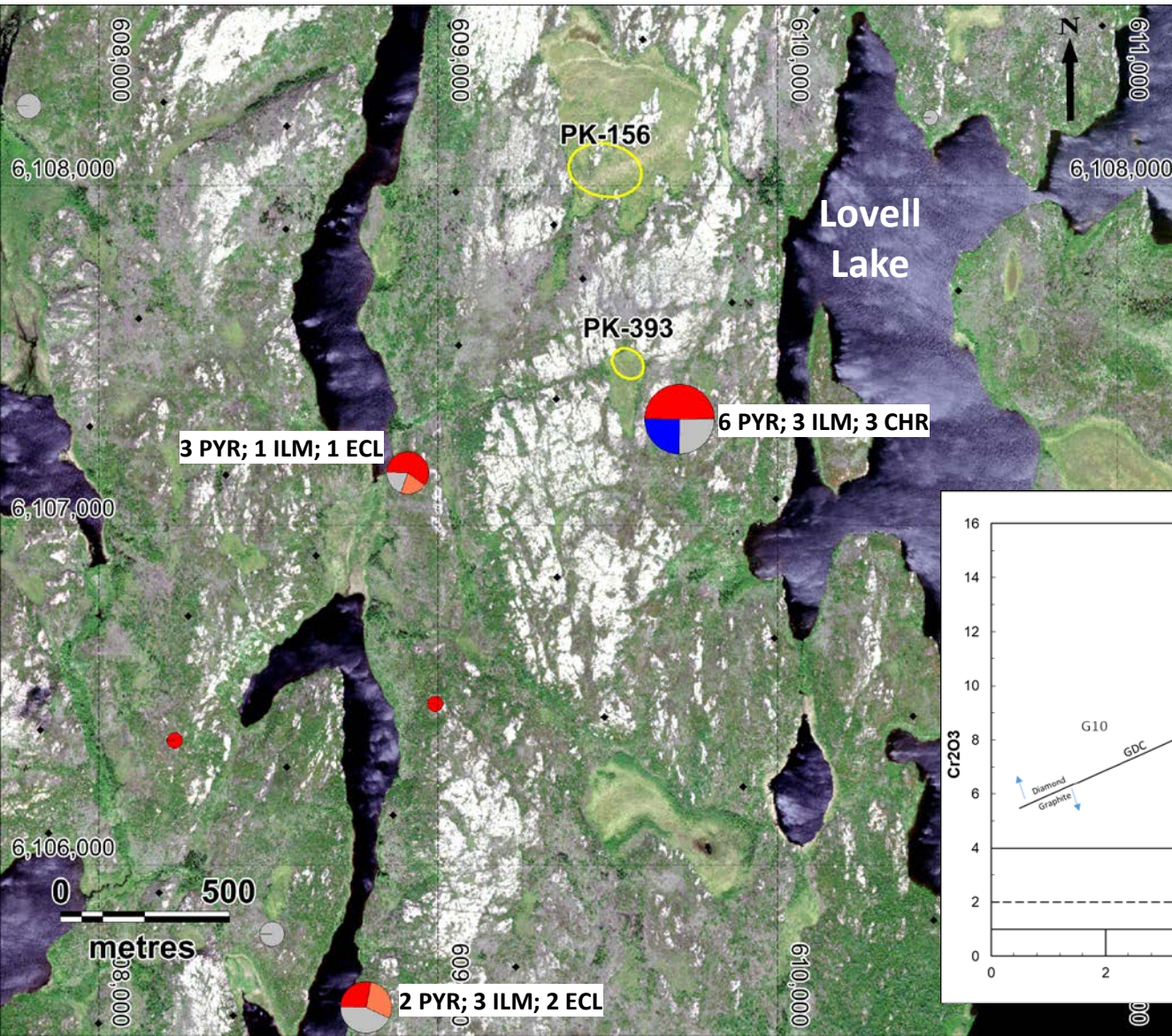




PK393 AREA KIMs— PROBE NORMALIZED TILLS

North Arrow

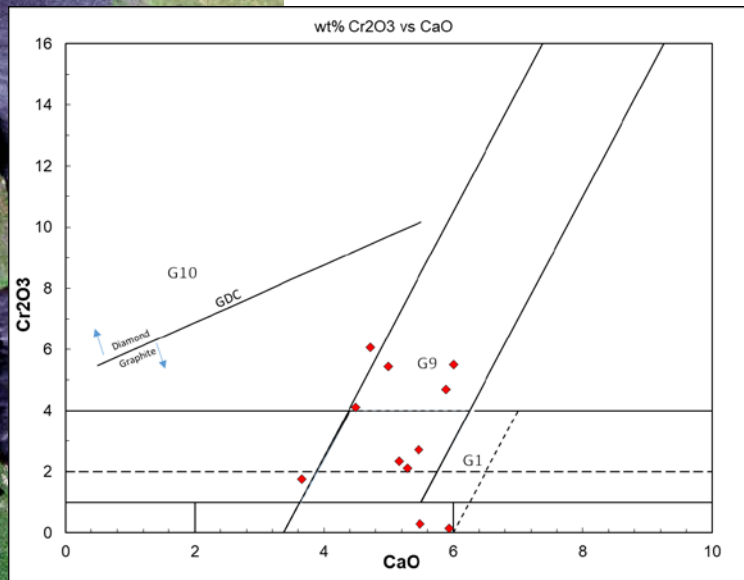
MINERALS INC.



PK393 Target Area:

- topo low within an ENE trending structural low
- up-ice of positive probe confirmed KIMs from tills

Garnet

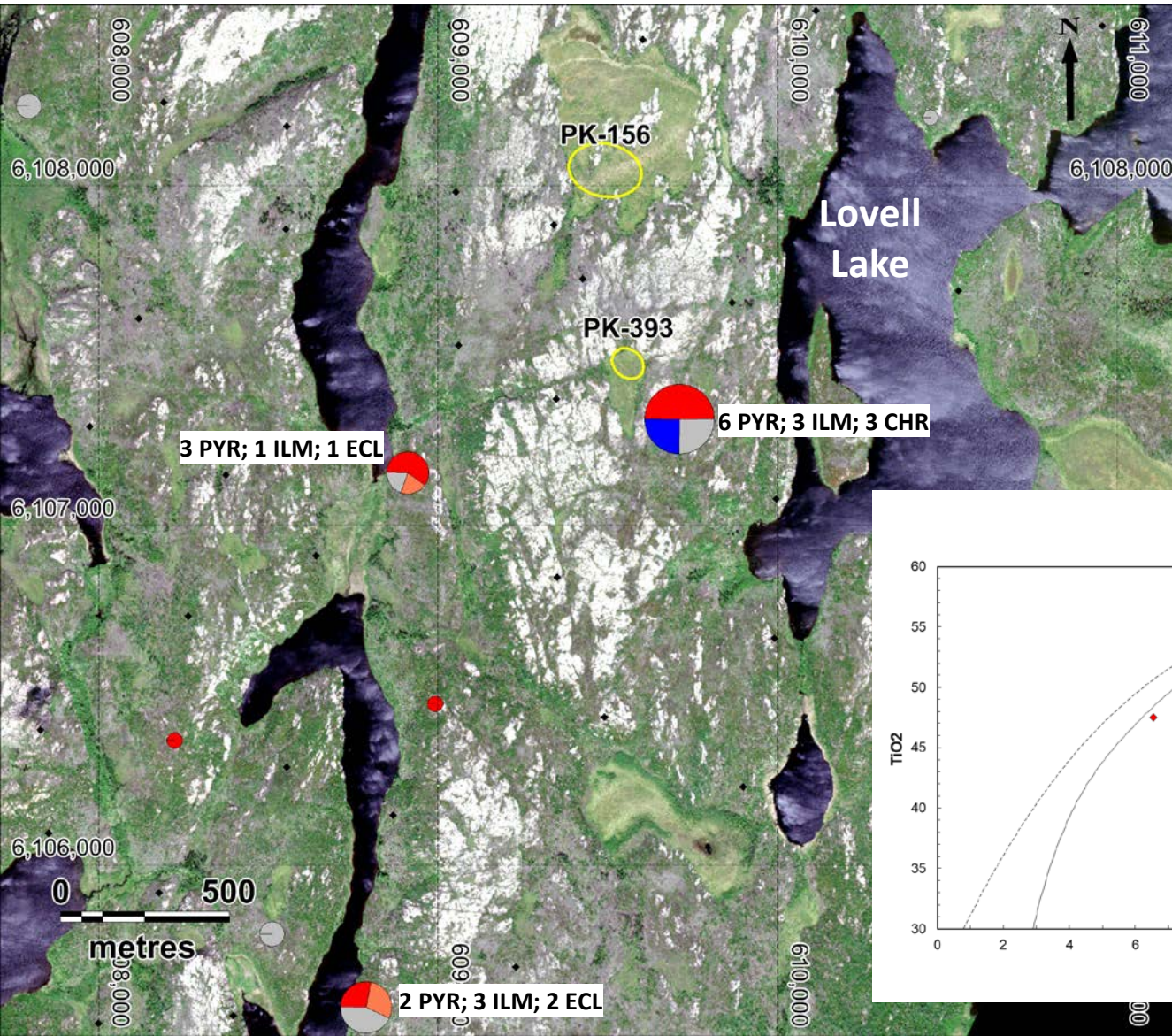




PK393 AREA KIMs— PROBE NORMALIZED TILLS

North Arrow

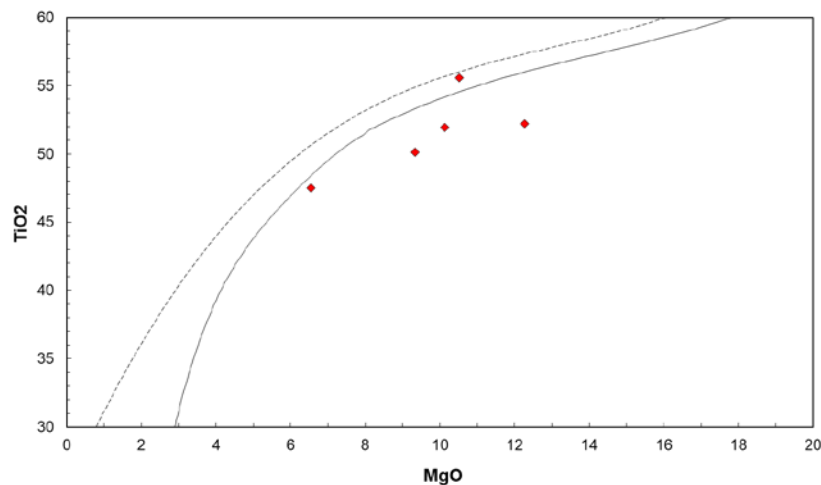
MINERALS INC.



PK393 Target Area:

- topo low within an ENE trending structural low
- up-ice of positive probe confirmed KIMs from tills

Ilmenite

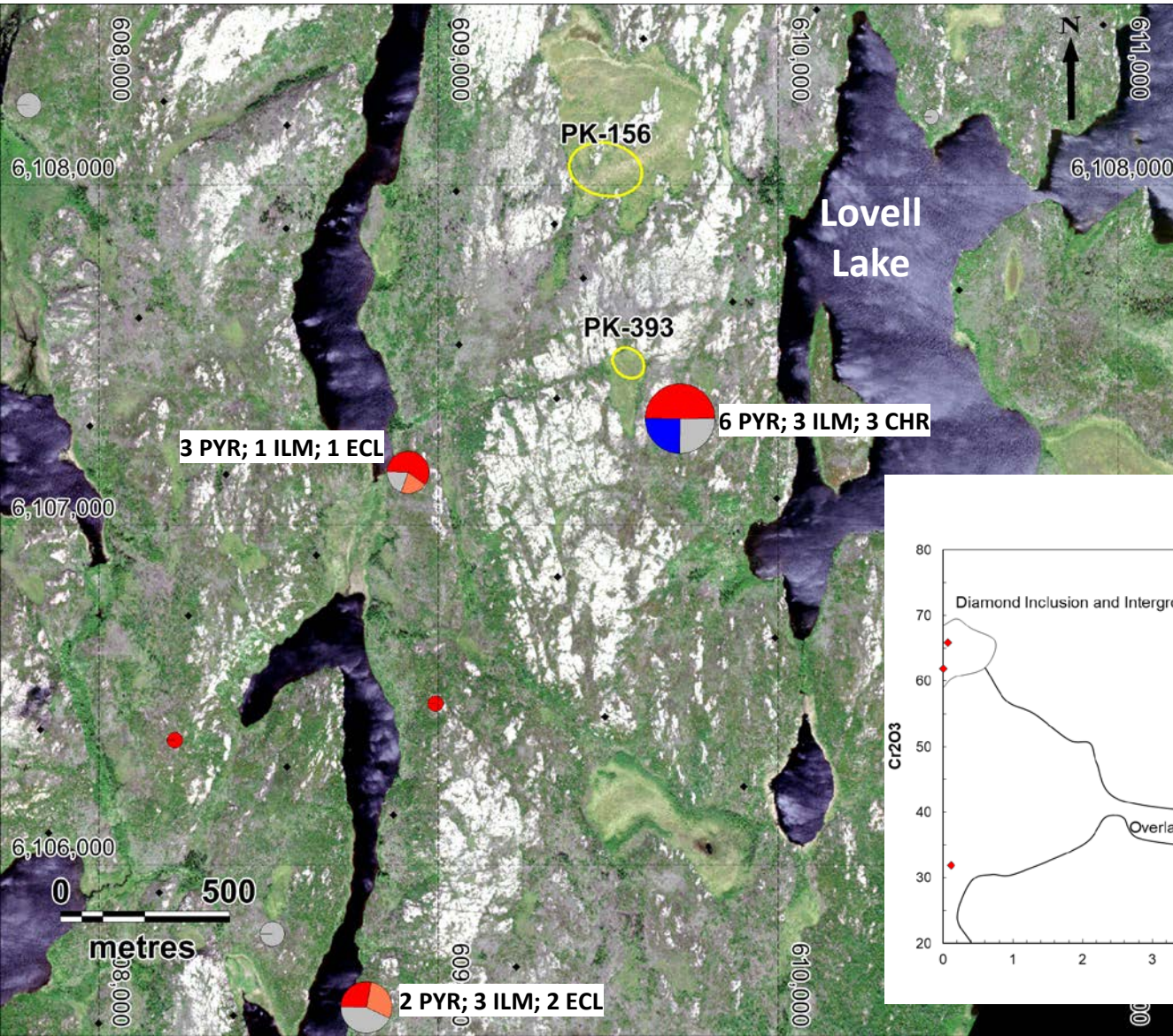




PK393 AREA KIMs— PROBE NORMALIZED TILLS

North Arrow

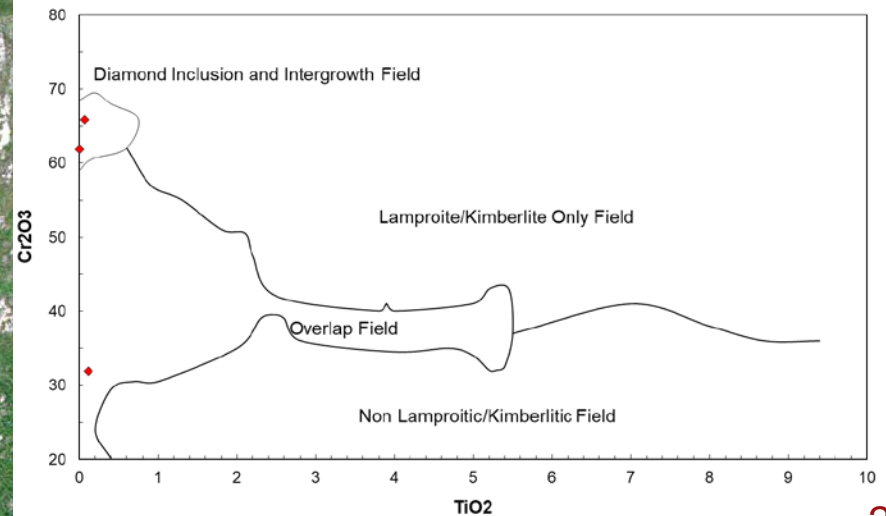
MINERALS INC.



PK393 Target Area:

- topo low within an ENE trending structural low
- up-ice of positive probe confirmed KIMs from tills

Chromite

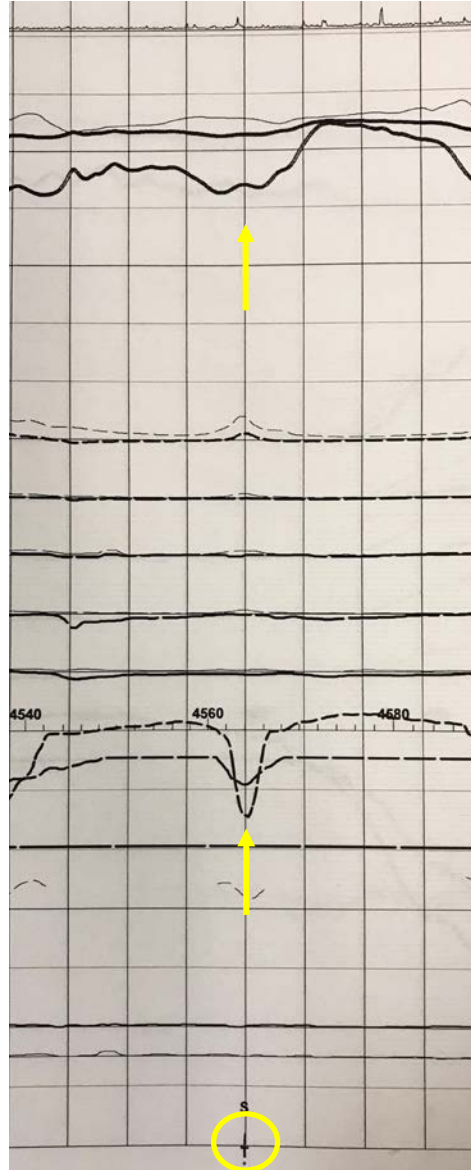




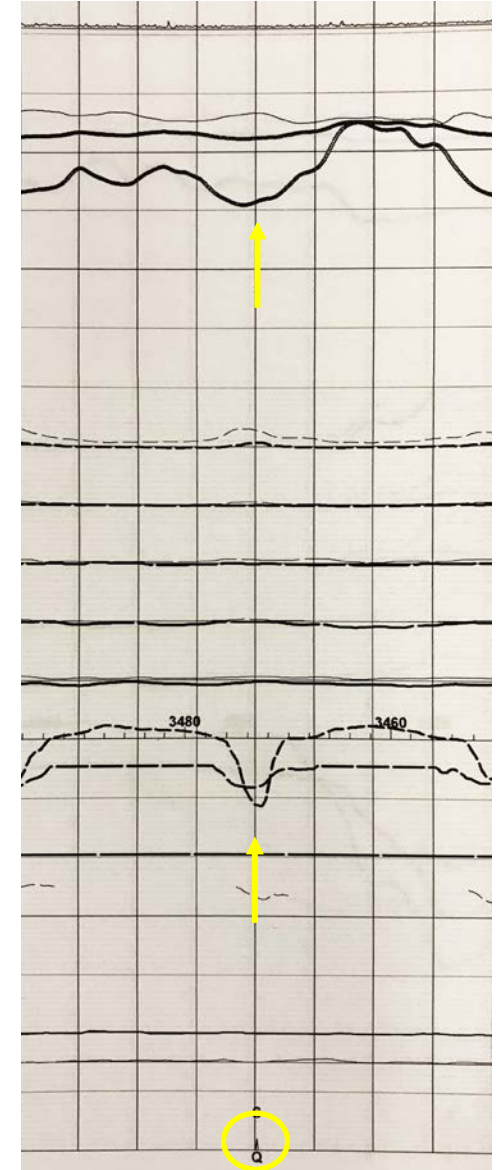
PK393: FUGRO DIGHEM SURVEY PROFILES

North Arrow
MINERALS INC.

Fugro Anomaly T:
Flight Line L11730:15



Fugro Anomaly Q:
Flight Line L11740:15



MAG 50/mm
ALTRAD_BIRD 6/mm
MAG 10/mm

RES56K
RES7200

RES900

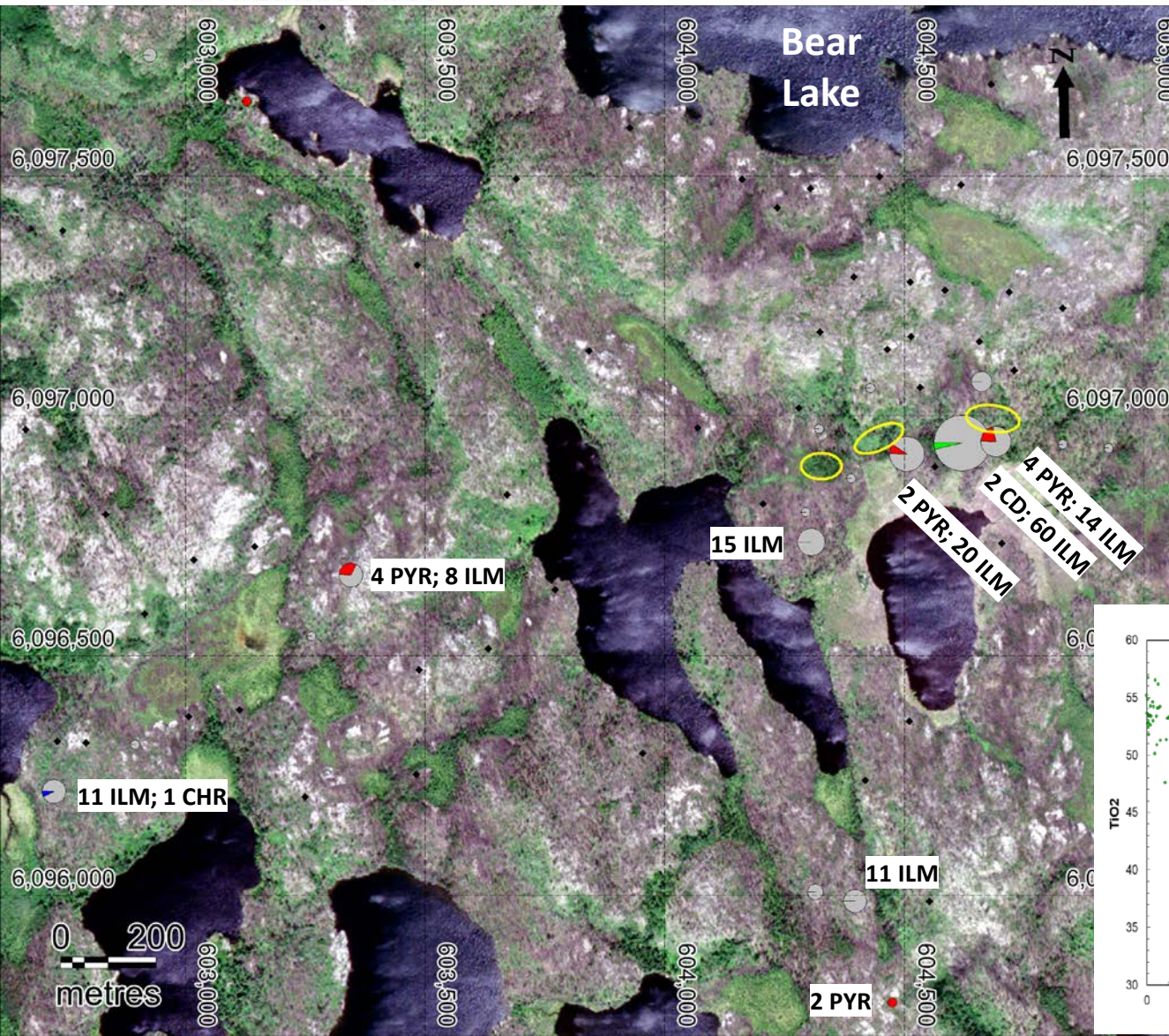
PK-393 coincides with Fugro's anomalies Q and T shown on the profile of two parallel flight lines



BEAR LAKE TARGET AREA

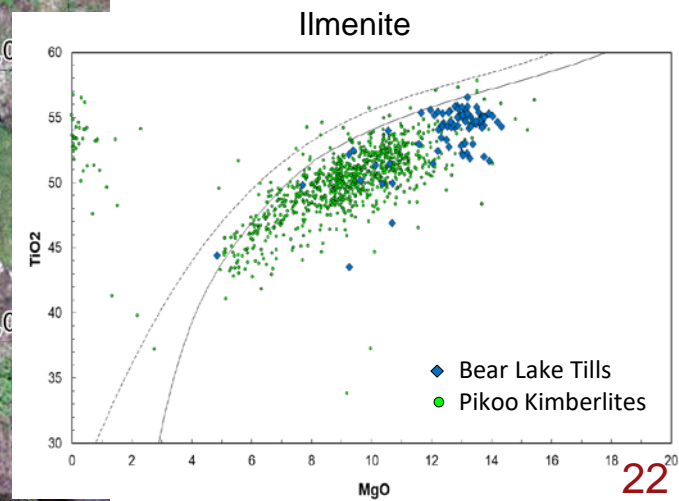
North Arrow

MINERALS INC.



Bear Lake targets:

- NE trending structural topographic low
- up-ice confirmed KIMs from tills
- Ilmenites have unique chemistry from the rest of the property (majority >12 wt% MgO)

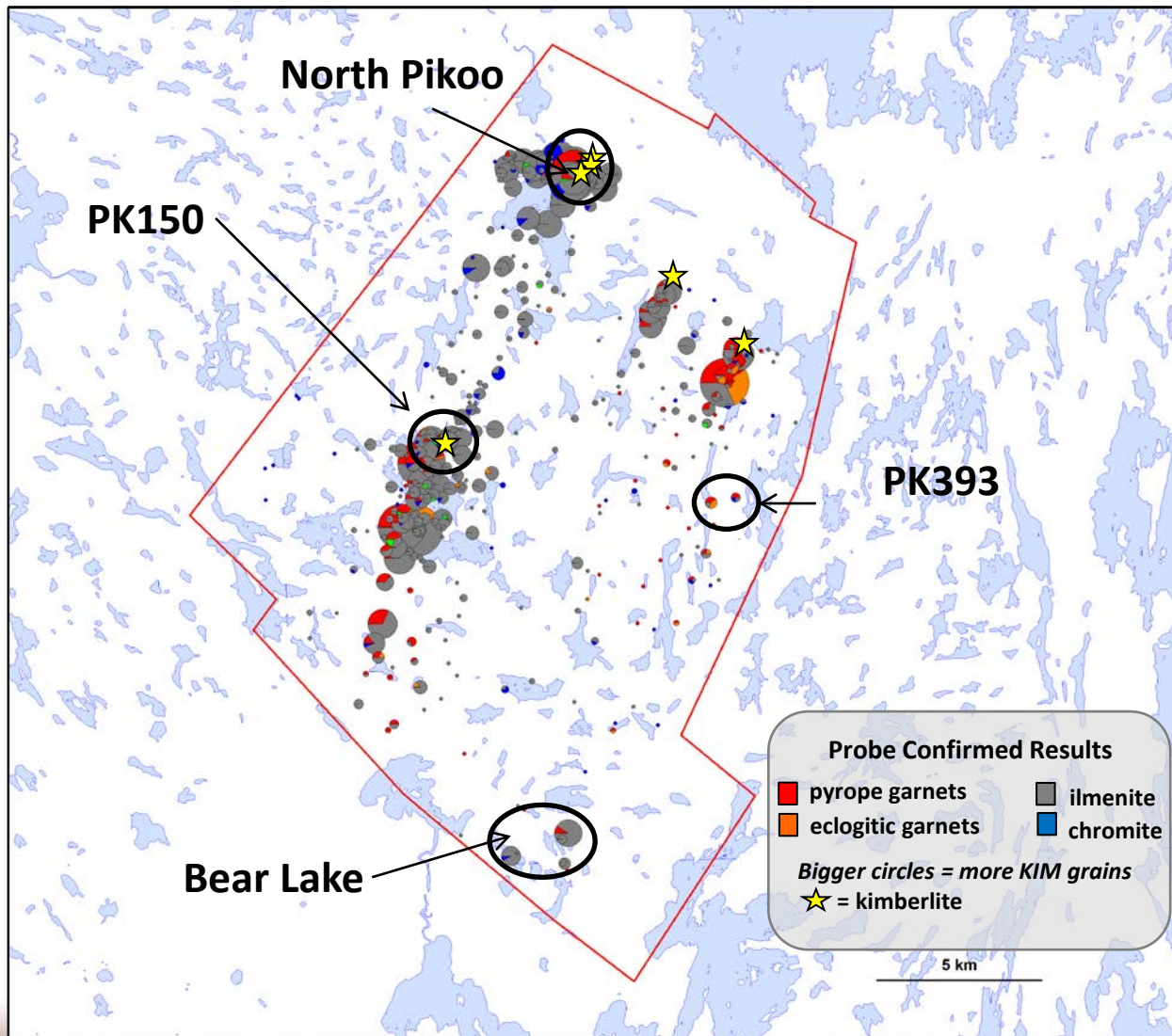




North Arrow

MINERALS INC.

- Future exploration to focus on 4 areas:
 - PK150 – deep drilling & along strike
 - North Pikoo – head of unsourced PYR train
 - PK393 and surrounding targets
 - Bear Lake target area





PIKOO PROJECT KIMBERLITES

North Arrow
MINERALS INC.



There are more out there....



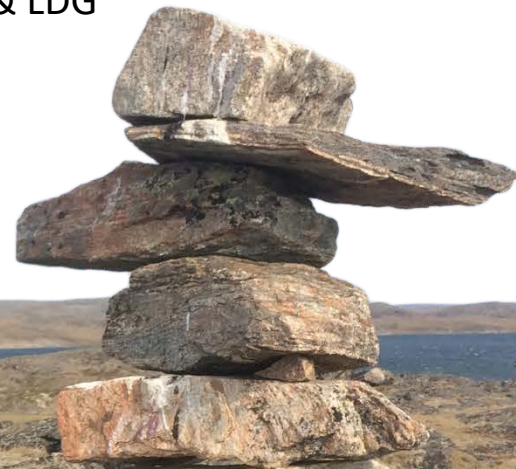
DIAMOND DISCOVERIES: A CANADIAN LEADER

North Arrow

MINERALS INC.

NAR: Canadian diamond sector's most active & successful explorer over the last 7 years

- One of Canada's largest under-evaluated diamond inventories at Naujaat's Q1-4 kimberlite (~26 million carats)
- Two new diamondiferous kimberlite fields – Mel & Pikoo
- 465 – first Lac de Gras kimberlite discovery in over 5 years
- Anchor – first kimberlite discovery by the LDG joint venture
- 6 drill-ready (and fully permitted) diamond properties; including 5 that host known diamondiferous kimberlite – Naujaat, Mel, Pikoo, Loki & LDG





North Arrow

MINERALS INC.



TSXV: NAR

Ken Armstrong
President & CEO

Nick Thomas
*Community and Investor
Relations Manager*

Suite 960-789 West Pender Street
Vancouver, BC
Canada V6C 1H2
Tel: +1.604.668.8354
Fax: +1.604.336.4813

info@northarrowminerals.com

@narminerals



northarrowminerals



www.northarrowminerals.com

