



**North Arrow**  
MINERALS INC.

DeStaffany  
**LITHIUM PROJECT**  
Northwest Territories, Canada

March 2023

## FORWARD-LOOKING INFORMATION

This presentation contains projections and forward-looking information that involve various risks and uncertainties, including, without limitation, statements regarding the potential extent of mineralization, resources, reserves, exploration results and plans and objectives of North Arrow Minerals Inc. These risks and uncertainties include, but are not restricted to, the amount of geological data available, the uncertain reliability of drilling results and geophysical and geological data and the interpretation thereof and the need for adequate financing for future exploration and development efforts. There can be no assurance that such statements will prove to be accurate. Actual results and future events could differ materially from those anticipated in such statements. These and all subsequent written and oral forward-looking statements are based on the estimates and opinions of management on the dates they are made and are expressly qualified in their entirety by this notice. The Company assumes no obligation to update forward looking statements should circumstances or management's estimates or opinions change.

QUALIFIED PERSON  
UNDER NI 43-101

Disclosure of a scientific or technical nature related to North Arrow's projects in this presentation has been reviewed and approved by Ken Armstrong, P.Geo. President and CEO of North Arrow and a Qualified Person under NI 43-101.



North Arrow is a Canadian company focused on the identification and evaluation of exploration opportunities in Canada.

North Arrow's multifaceted project portfolio includes a pipeline of lithium, diamond and gold projects ranging from greenfields to advanced stage.





**Canadian diamond sector's most active & successful explorer over the last 10 years...now with lithium exposure**

**Lithium is not new to North Arrow:**

- ❖ Experience in exploration for spodumene lithium pegmatites
- ❖ **DeStaffany project – rapid evaluation of known spodumene pegmatites**
- ❖ **Bathurst pegmatite lithium project – greenfield discovery opportunity**
- ❖ **Additional pegmatite lithium opportunities being evaluated**

**Best in class Diamond exploration pipeline:**

- ❖ Diamond business is healthiest it has been in years

**Strong Investor support:**

- ❖ ~139M shares outstanding & >60% held by insiders/key shareholders



## Advanced Stage

Assessing a known diamond deposit

### 1. Naujaat (60%)

*Significant diamond inventory; High-value fancy orange-yellow diamonds*

## Discovery Stage

Next stage of diamond exploration could lead to discovery

### 2. Pikoo (100%)

*Kimberlite discovery – 2013-16*

### 3. Loki (100%)

*Kimberlite discovery - 2018*

### 4. LDGJV (~21%)

*Kimberlite discovery – 2019*

### 5. Mel (100%)

*Kimberlite discovery – 2017-18*

### 6. Luxx (100%)

## Grassroots

Target development

### 7. CSI (100%)

**Oro - Hope Bay (100%)**  
Gold project 3km north of Agnico Eagle's Doris Mine

**DeStaffany (100%)**  
Spodumene lithium pegmatite project

**Bathurst Inlet (100%)**  
Grassroots lithium exploration project







## **DeStaffany (100%)**

*Spodumene lithium  
pegmatite project*



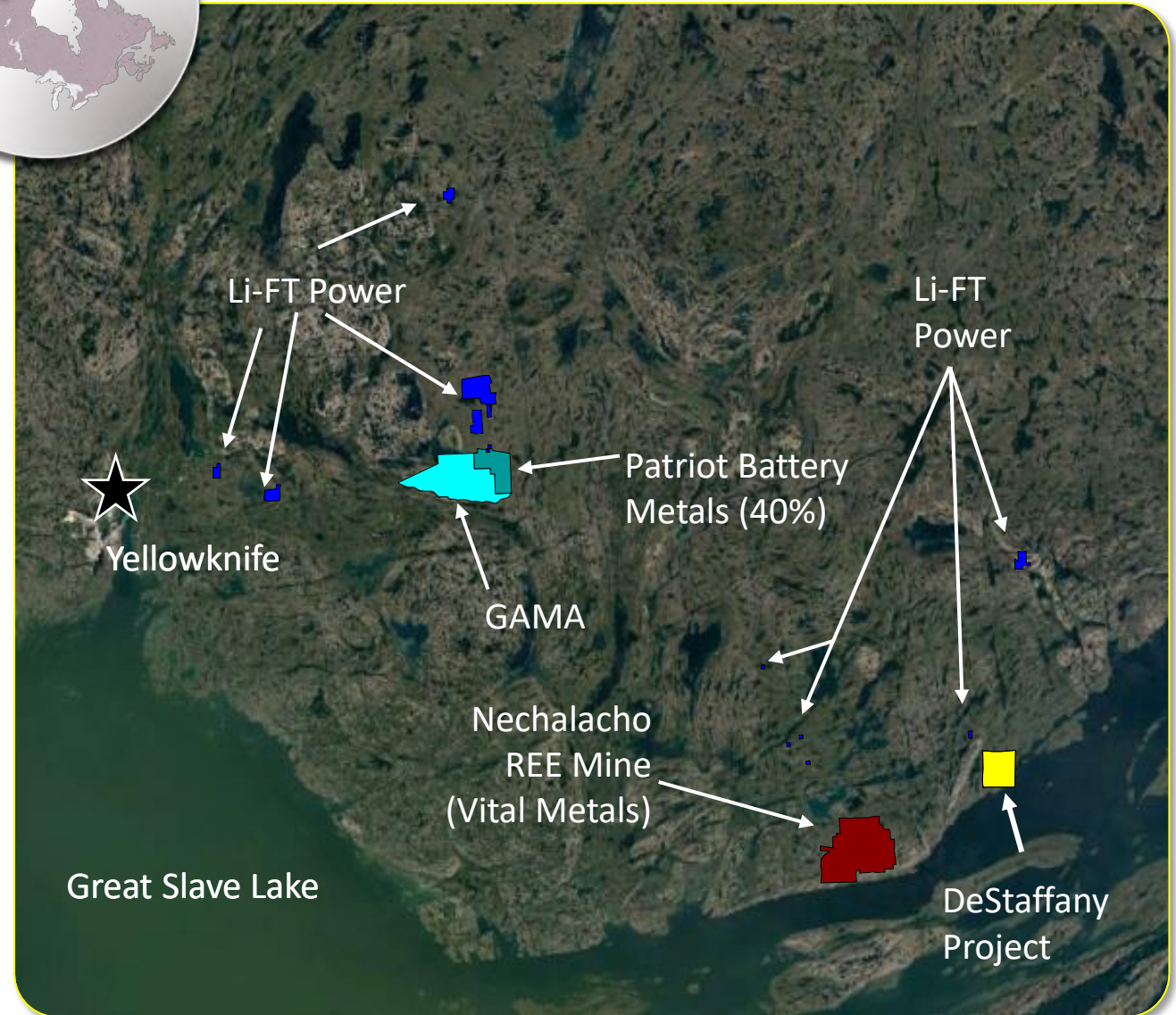
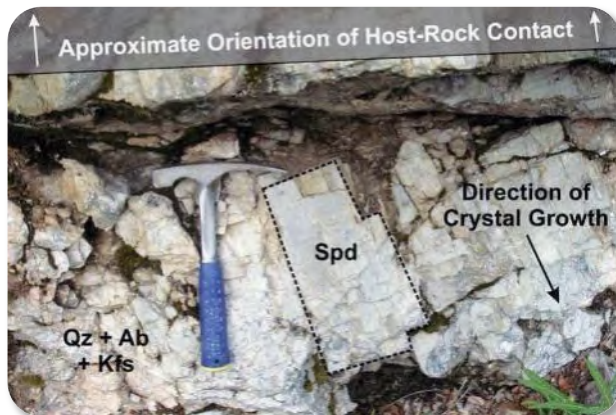
## **Bathurst Inlet (100%)**

*Grassroots lithium  
exploration project*





- 115 km East of Yellowknife
- 18 km Northeast of Nechalacho REE Mine
- Air/barge access to Yellowknife and to rail head at Hay River on south side of Great Slave Lake
- 100% interest (acquired for cost of staking + NSR)
- Part of strategic relationship with Panarc Resources to identify additional spodumene targets in NWT and NU







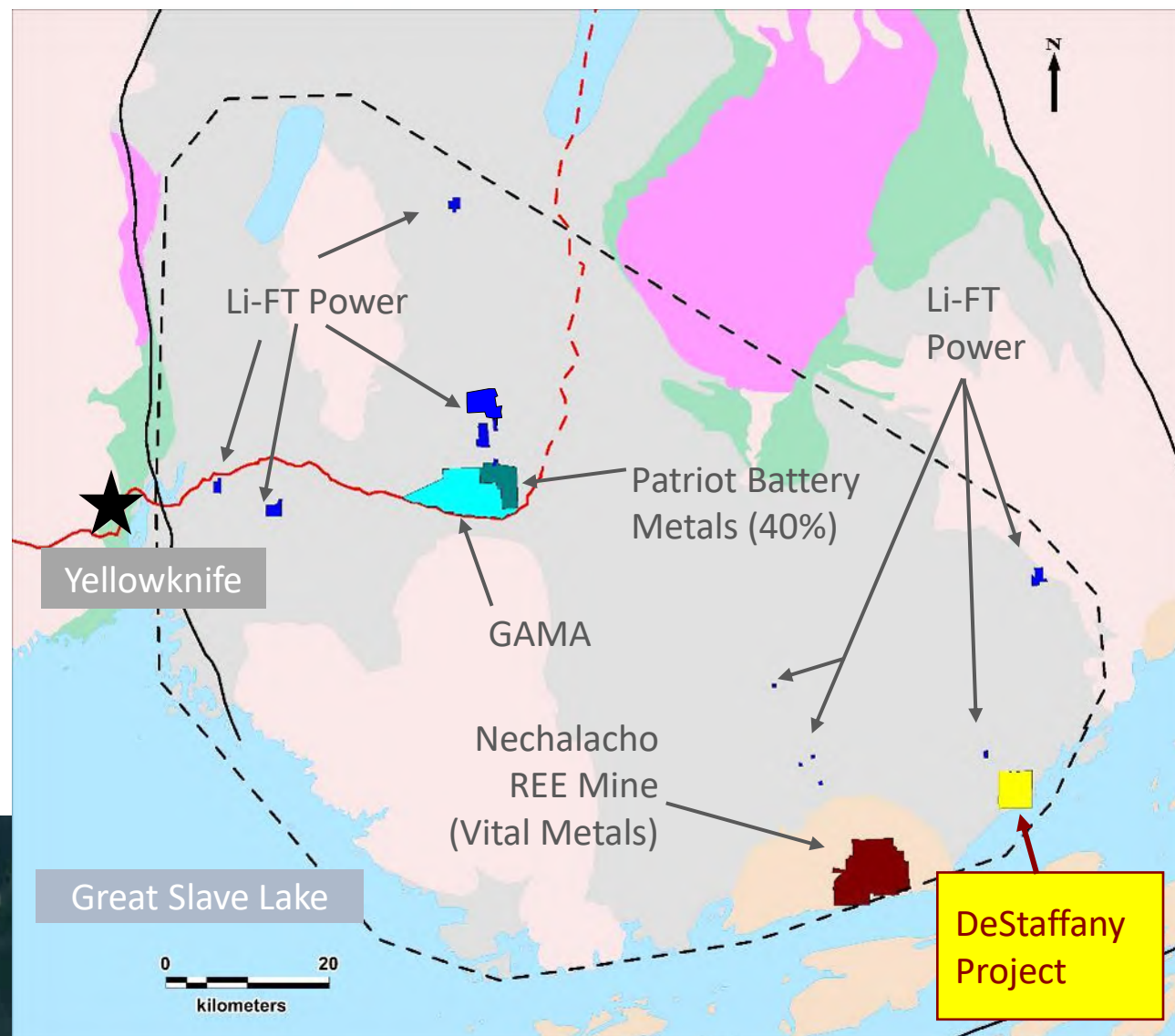
# DESTAFFANY PROJECT - Spodumene Pegmatites

## North Arrow MINERALS INC.

- Yellowknife Pegmatite Province
- Same setting as Li-FT Power's Yellowknife Lithium Project
- Other players in area include Patriot Battery Metals and Gama Explorations
- NAR team has past Li, Ta and REE experience in the region
- DeStaffany hosts two spodumene pegmatites ...and there could be more

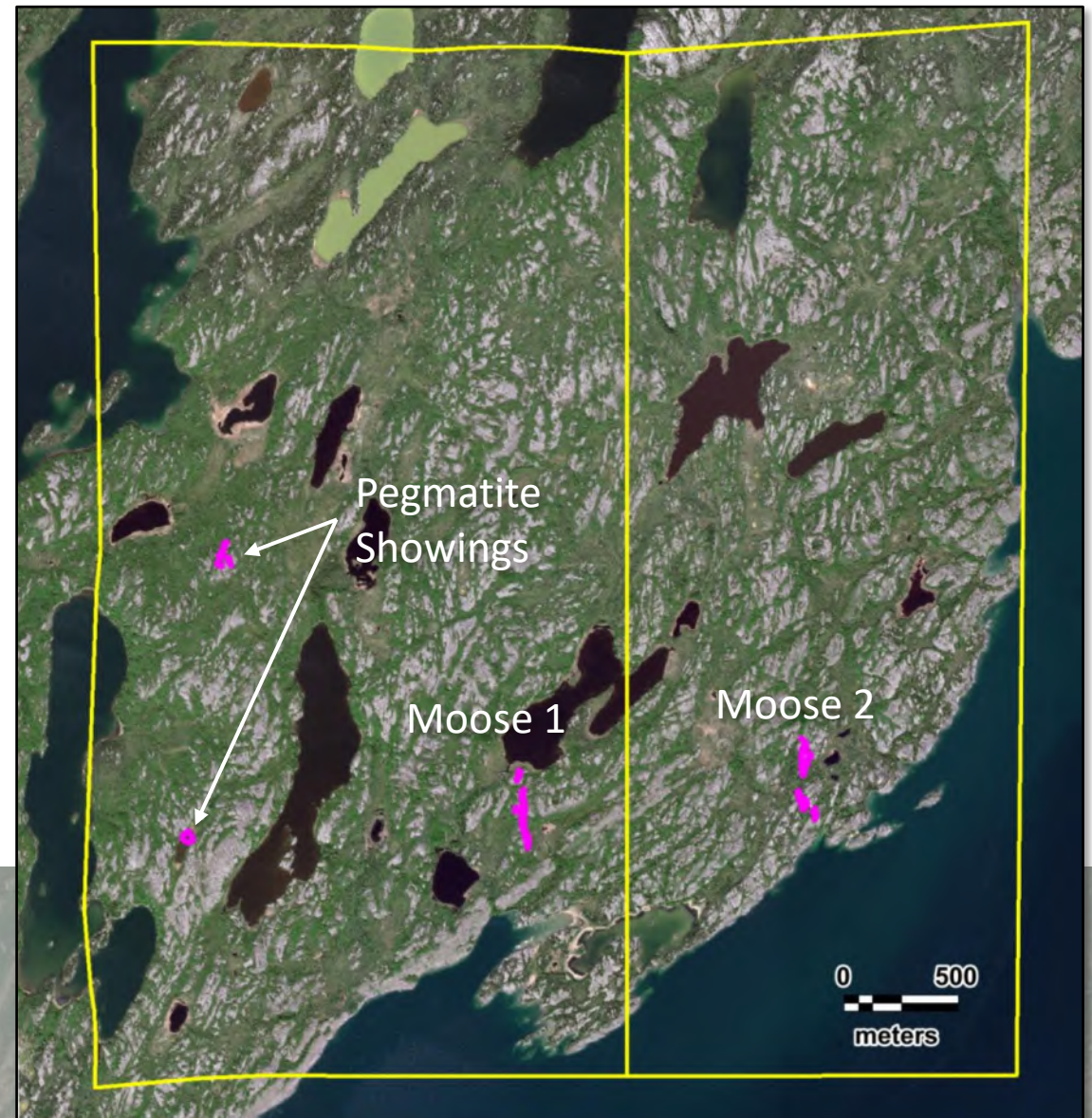
### LEGEND:

North Arrow - DeStaffany	PROTEROZOIC
Li-FT Power	Cover and intrusive rocks
Gama Explorations	ARCHEAN
PMET / Youssa	Plutonic rocks / partly >2.8Ga
Nechalacho REE Mine (Vital Metals)	Metasediments / migmatites
Road	Volcanic and related intrusions
Winter_Road	Fault
Yellowknife Pegmatite Province	





- Two known spodumene pegmatites: Moose 1 and Moose 2
- Within several hundred metres of Great Slave Lake.
- Moose 2 was test mined for Ta, Nb, Sn in the 1940's & 50's
- **Never evaluated for lithium**
- Excellent potential for additional lithium pegmatites, including two pegmatites noted in historical records.



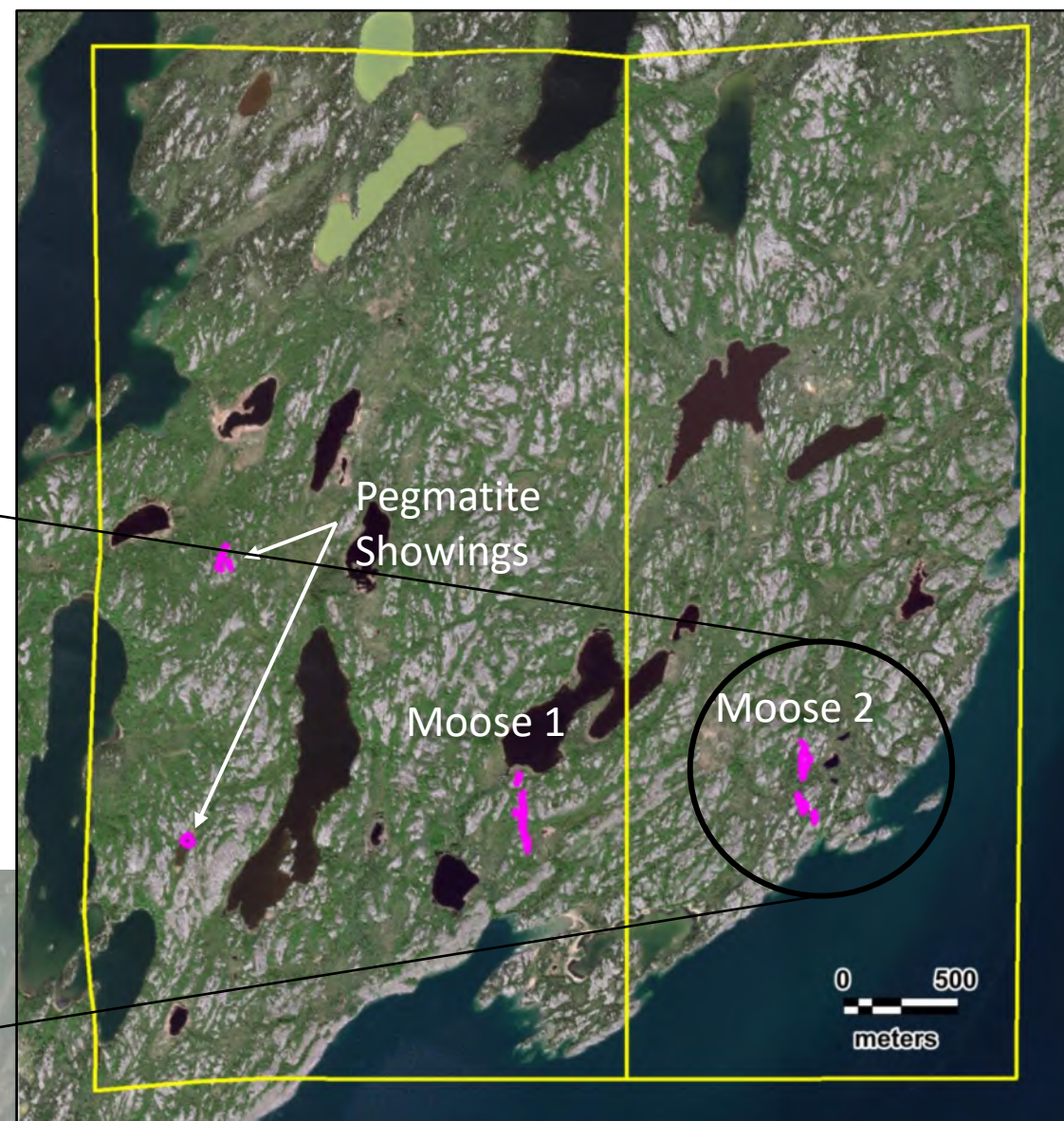
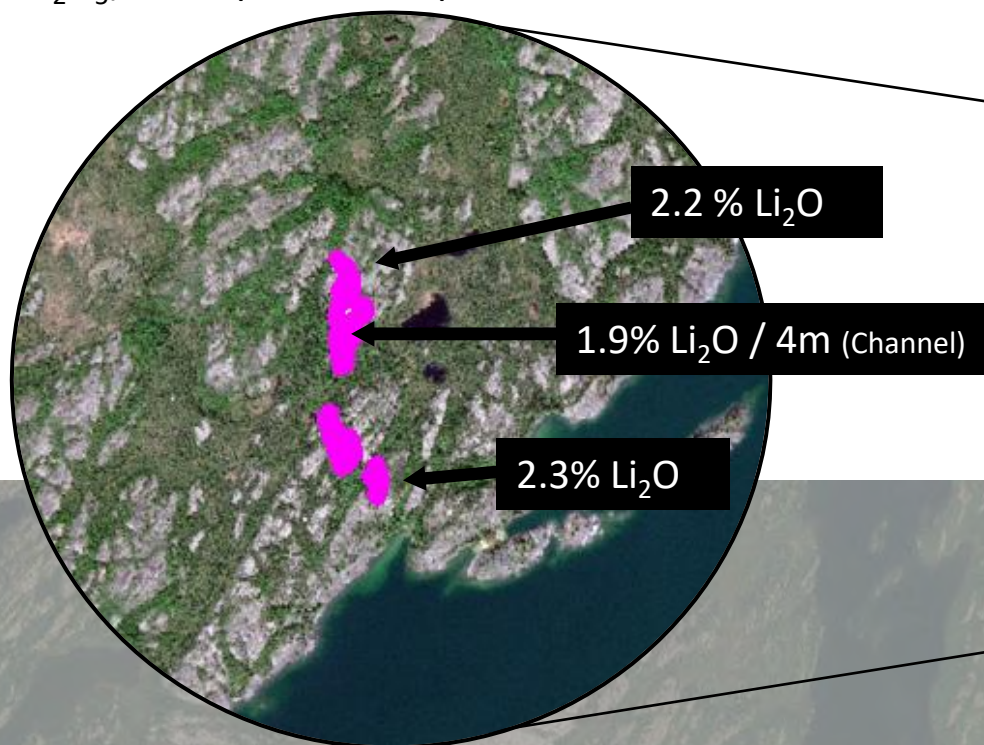




# MOOSE 2 PEGMATITE – up to 40% Spodumene

## North Arrow MINERALS INC.

- 450m strike length; up to >30m wide
- Zoned LCT type pegmatite
- Feldspar + quartz + spodumene + muscovite
- **Locally up to 40% spodumene**
- Local Amblygonite (Li phosphate) zones (up to 8.4%  $\text{Li}_2\text{O}$ ; 38.2%  $\text{P}_2\text{O}_5$ ) could provide Li upside.







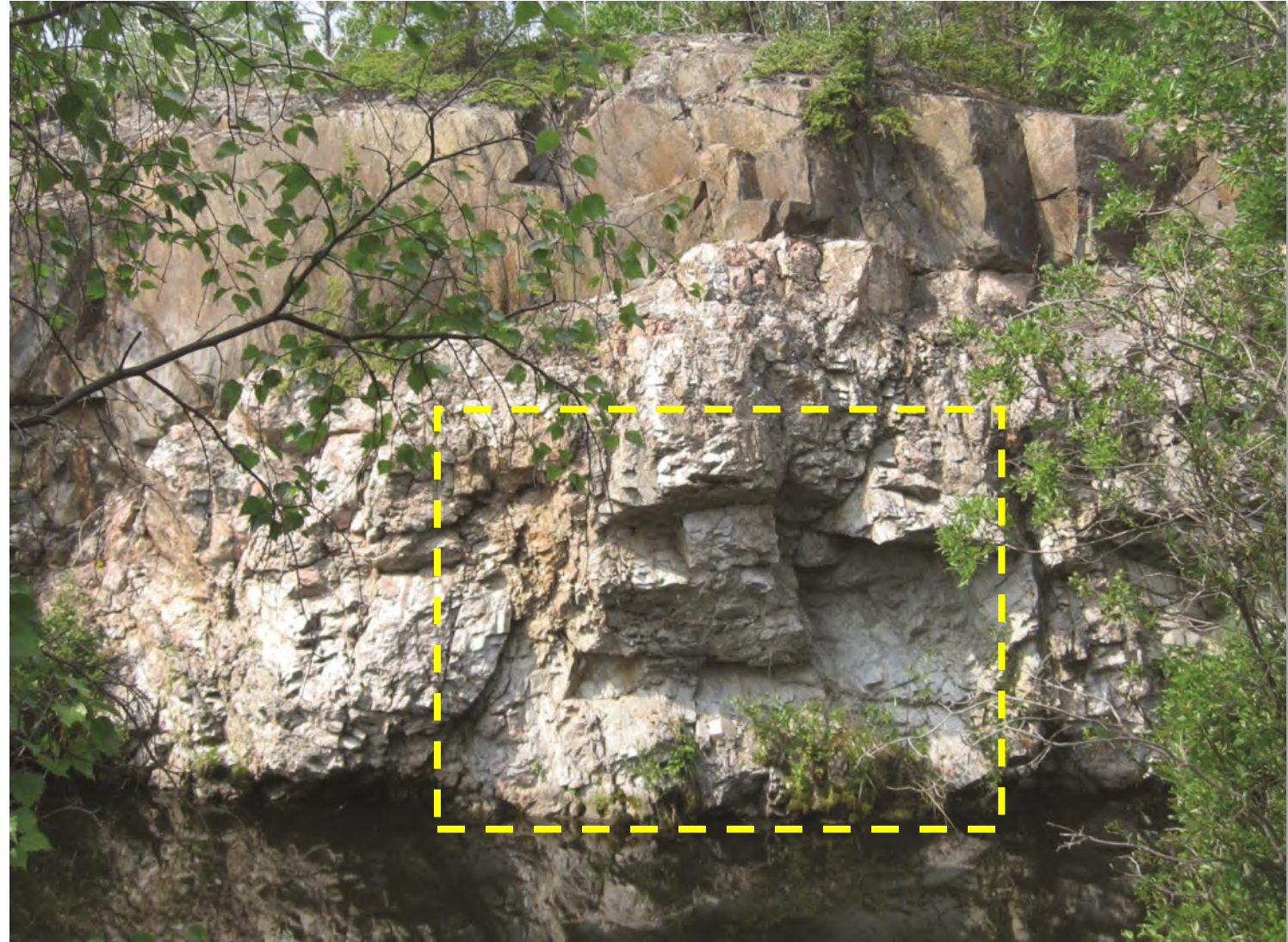
# MOOSE 2 PEGMATITE – Historic Mining

## North Arrow MINERALS INC.

- Historic mining focused on recovering Ta and Nb
- Megacrystic spodumene in pit wall
- Spodumene not targeted by past mining
- Pegmatite dips 50-80 degrees to the west (away from view on right)



DeStaffany Mill abutments - Great Slave Lake in background



Megacrystic spodumene in pit wall



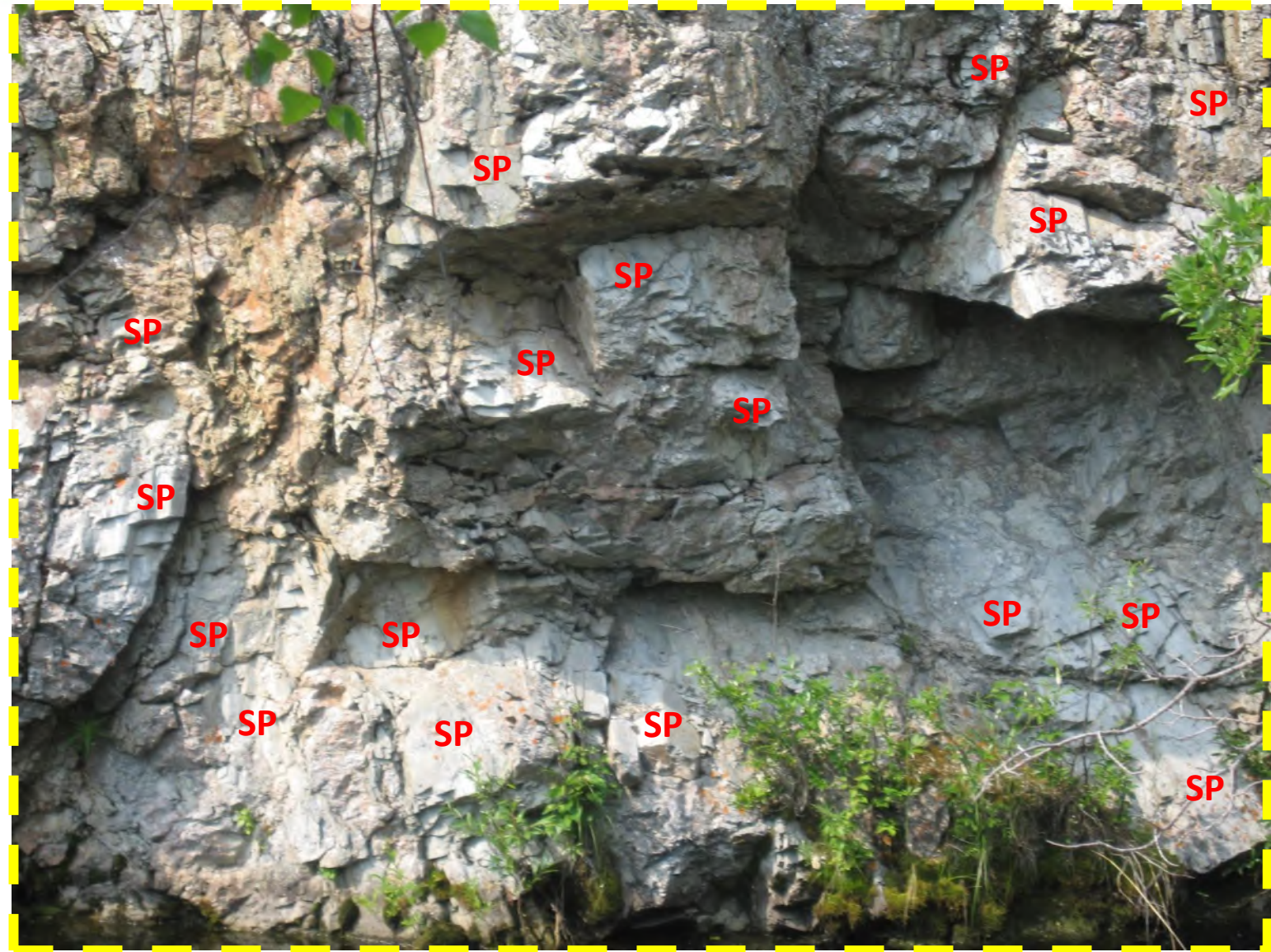


## North Arrow MINERALS INC.

- Historic mining focused on recovering Ta and Nb
- Megacrystic spodumene in pit wall
- Spodumene not targeted by past mining
- Pegmatite dips 50-80 degrees to the west (away from view on right)



## MOOSE 2 PEGMATITE – Spodumene Megacrysts



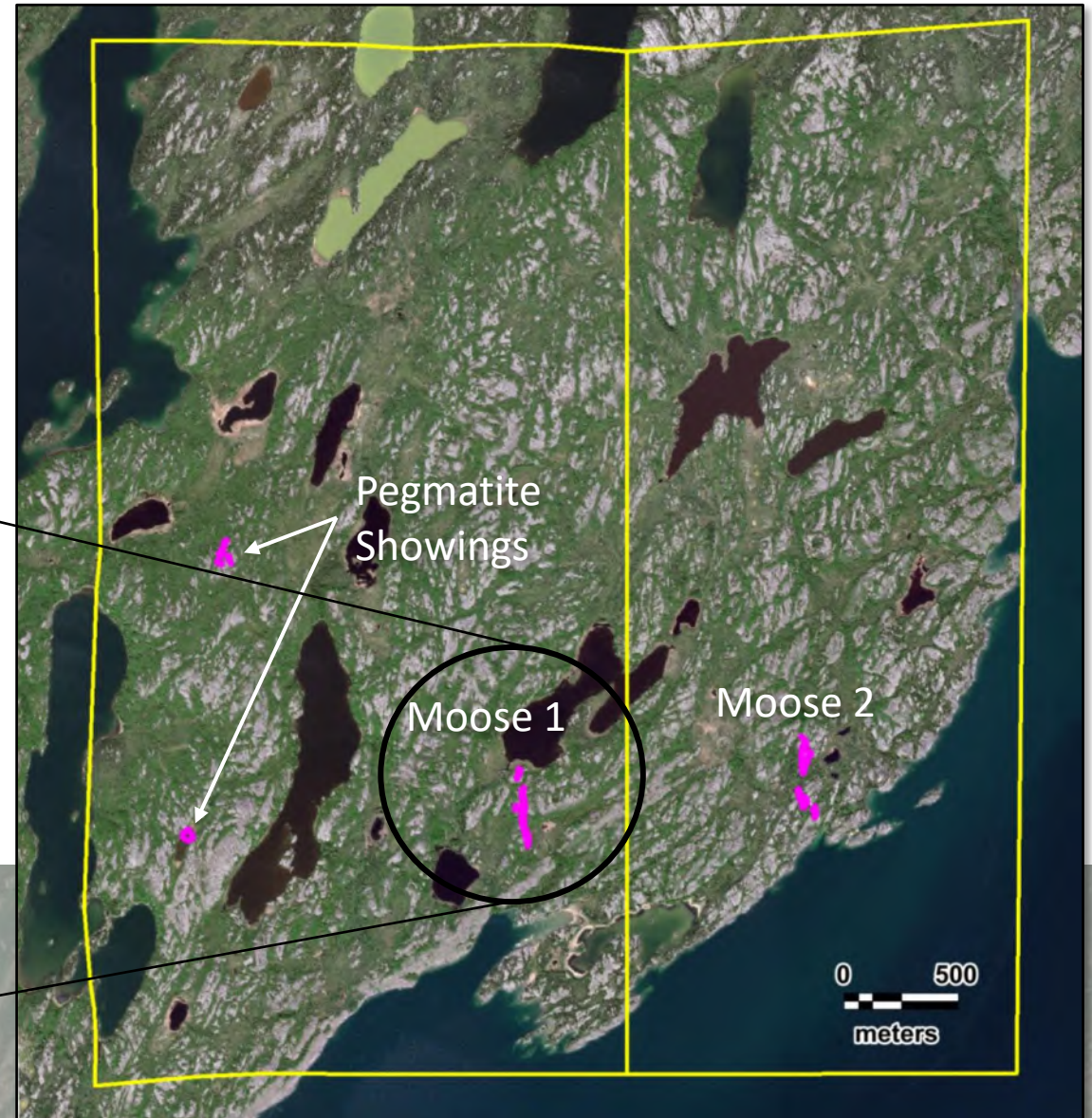
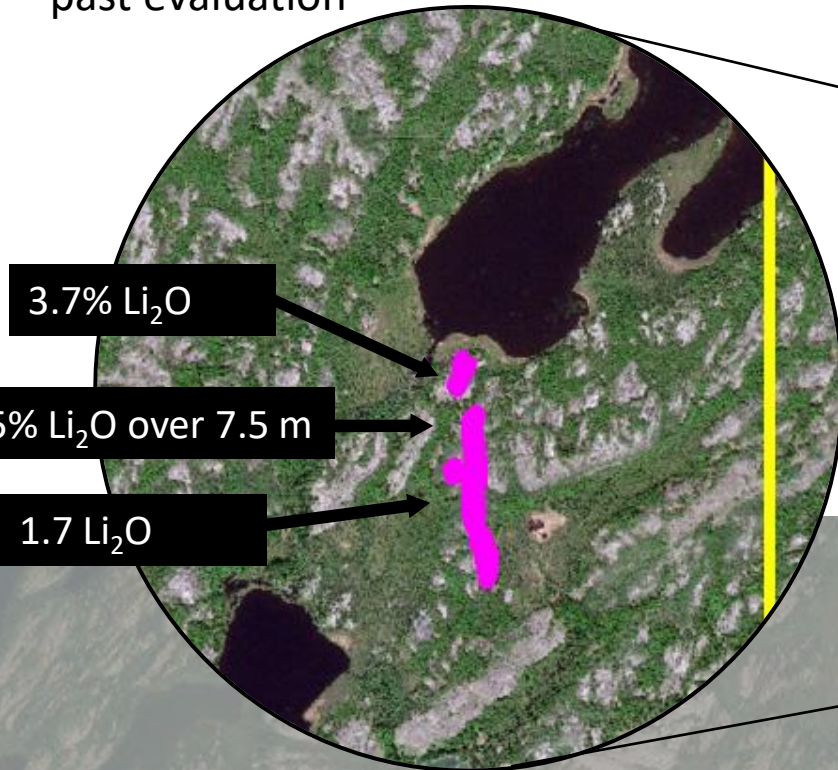
SP = SPODUMENE





## North Arrow

- Never drilled
- 370m strike length
- Averages 4.5 to 6m in width; max width ~11m
- Zoned LCT Type Pegmatite
- Lack of Ta-Nb mineralization therefore little past evaluation



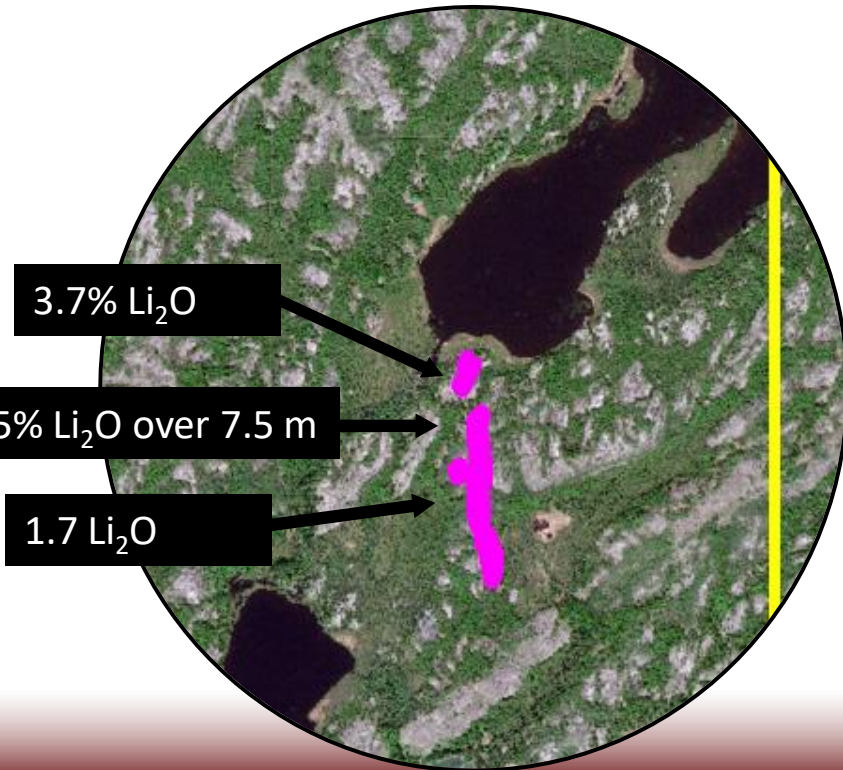




# MOOSE 1 PEGMATITE – Spodumene Mineralization


## North Arrow

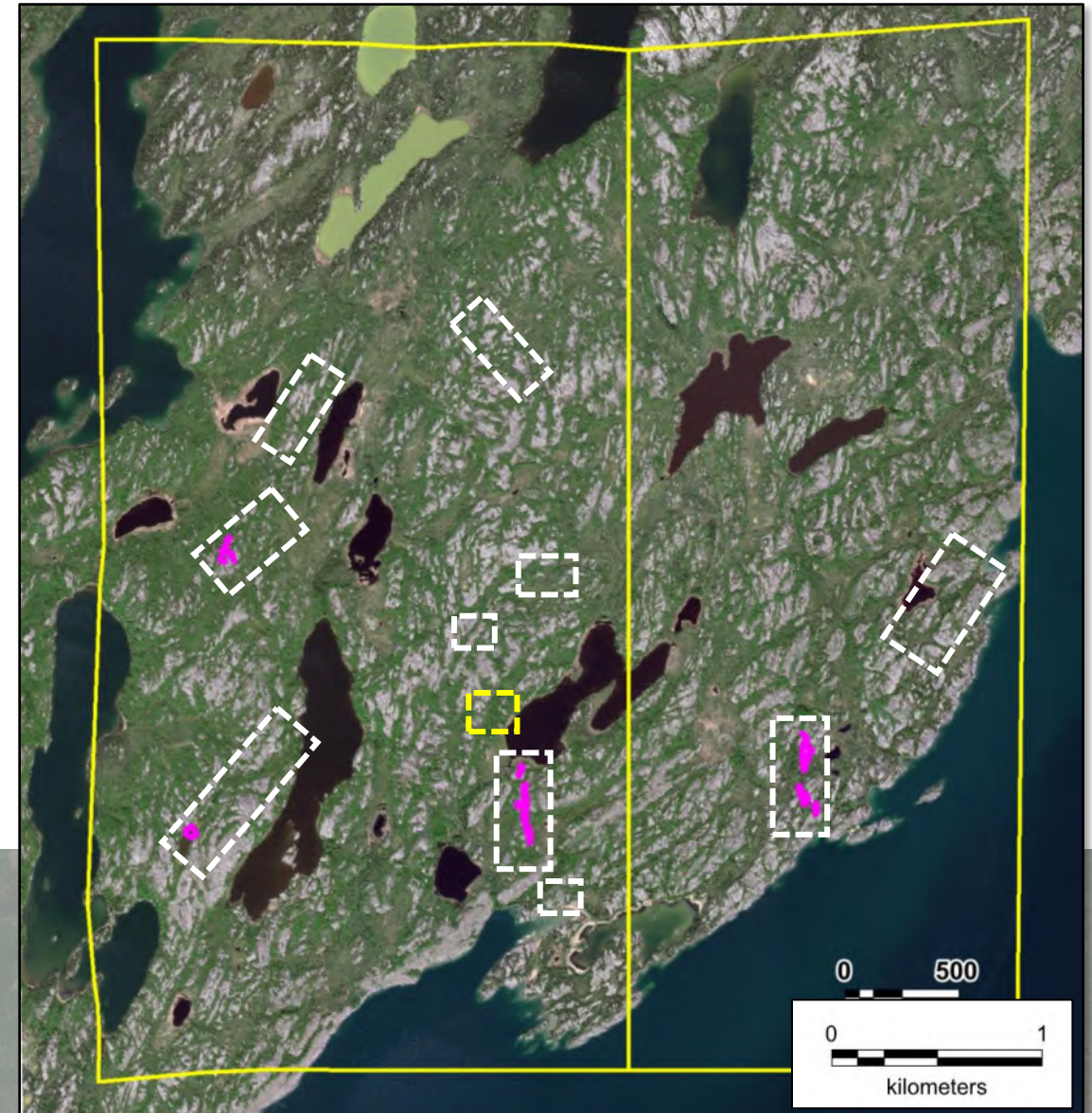
- Spodumene with lesser amblygonite
- Amenable to channel sampling
- **1.5%  $\text{Li}_2\text{O}$  / 7.5m** from 2009 channel sample  
Including M1-07: **2.8%  $\text{Li}_2\text{O}$  / 1m**





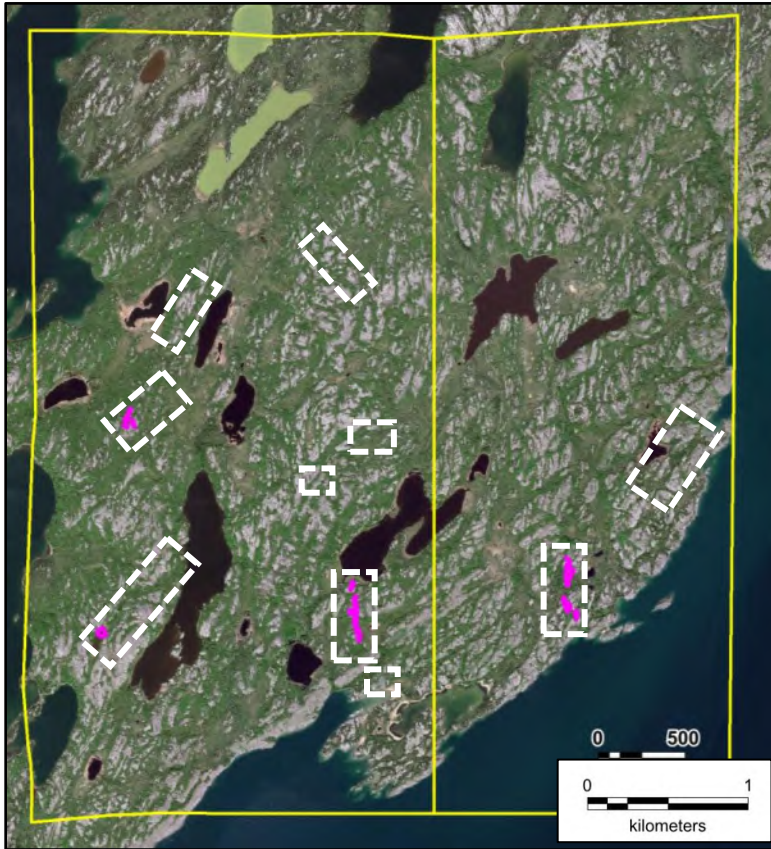
- Prospecting target areas identified outside of the Moose 1 and Moose 2 pegmatites
- Based on review of historic lithogeochemistry survey & satellite imagery
- Li or Li + Cs Targets
- Includes two targets corresponding with pegmatite noted by Navigator.

 Moose Nickel showing – limited sampling in 1998 & 2001 returned **0.92 to 6.5% Ni** from Ni-sulphides





## Can the Moose pegmatites produce a marketable spodumene concentrate?

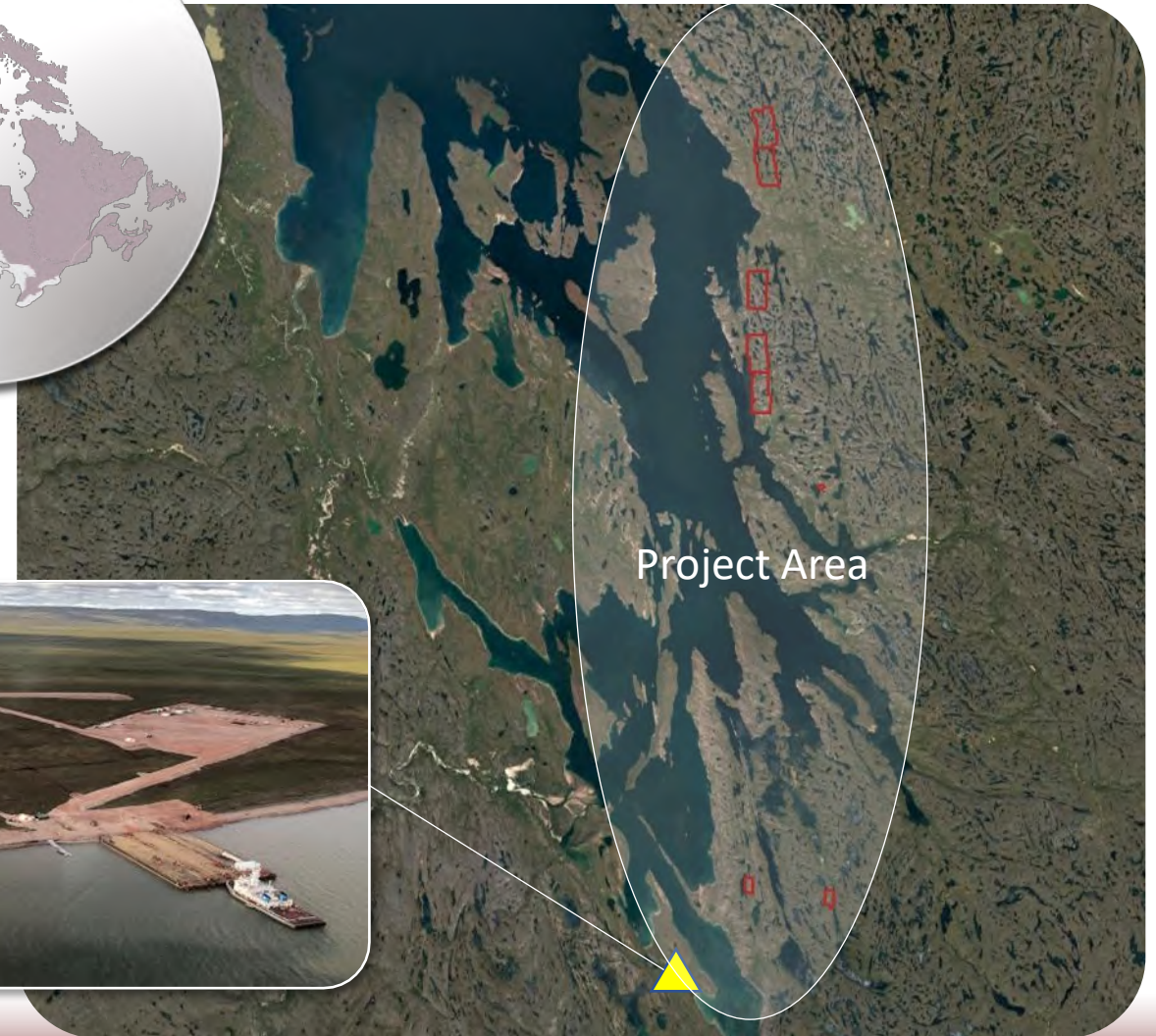


- Moose 2 and Moose 1 – mapping, representative channel sampling and ‘bulk’ sampling spodumene zones for mineral recovery & characterization studies
- Property wide prospecting and mapping focused on new discoveries of spodumene pegmatite
- Initial drilling of Moose 2 and Moose 1 to define strike and depth extent of spodumene zones.
- Evaluate potential of value upside from tantalite-columbite (Ta & Nb) and amblygonite (Li)

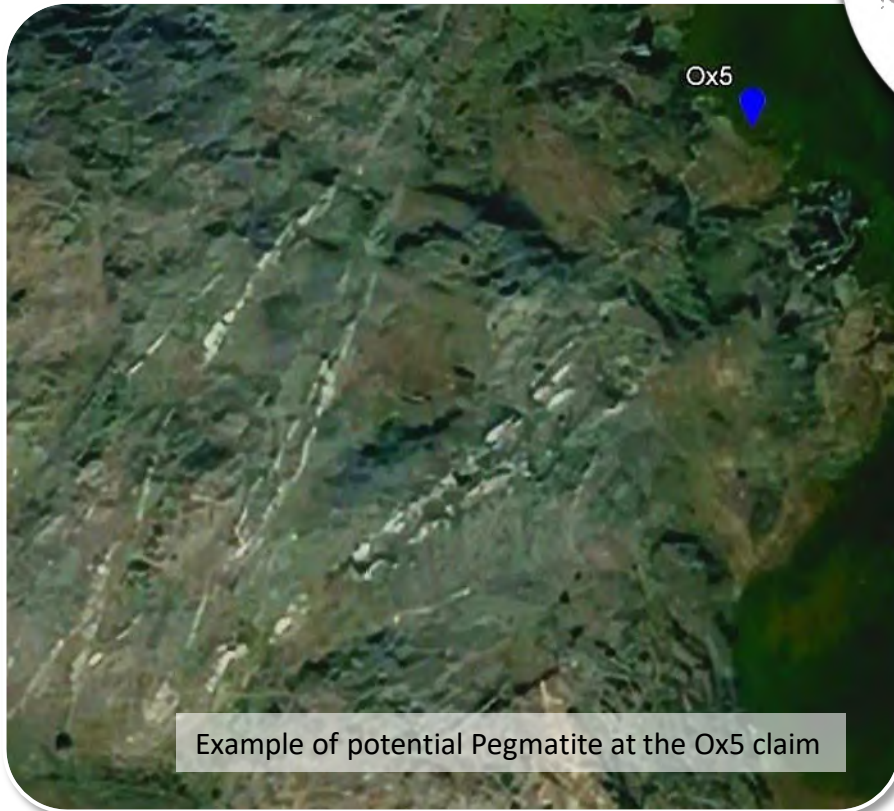




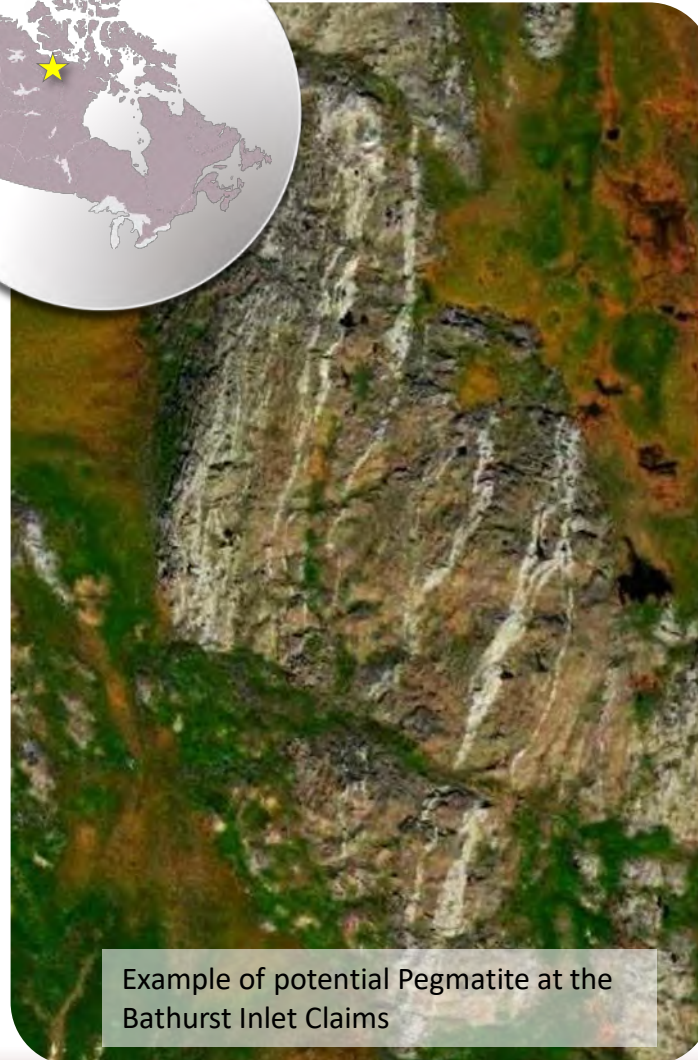
- Part of strategic alliance with Panarc to identify and acquire lithium pegmatite opportunities in the NWT and NU.
- Pegmatites have been known to occur in the Bathurst Inlet area for many decades.
- Yet to be assessed for spodumene and related lithium mineralization. **Program planned for summer 2023.**
- The southernmost mineral claim lies within 12 km of Sabina Gold and Silver's port facility.







Example of potential Pegmatite at the Ox5 claim



Example of potential Pegmatite at the Bathurst Inlet Claims

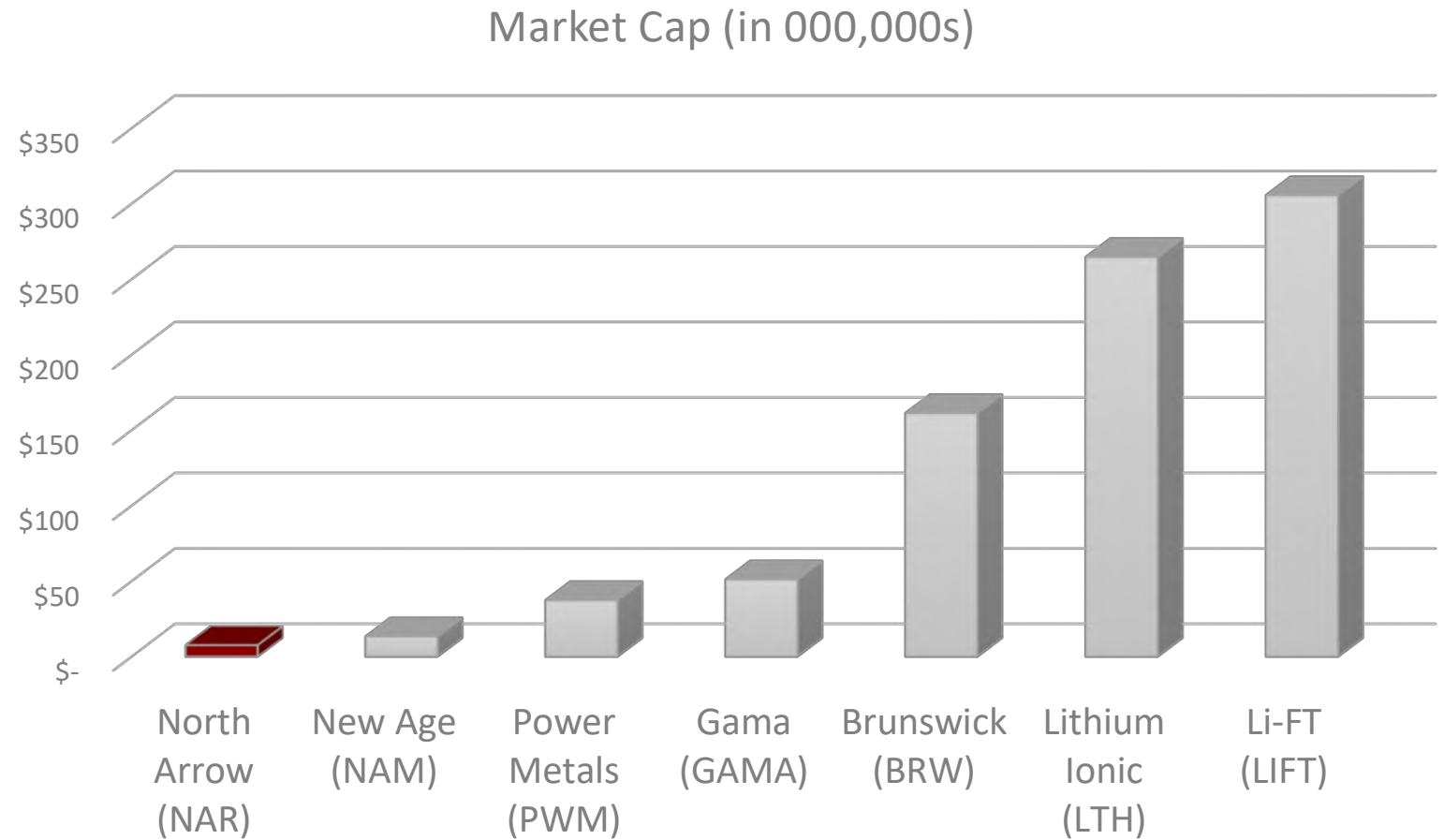


Example of potential Pegmatite at the Ox3 claim.



## COMPANY SELECTION CRITERIA

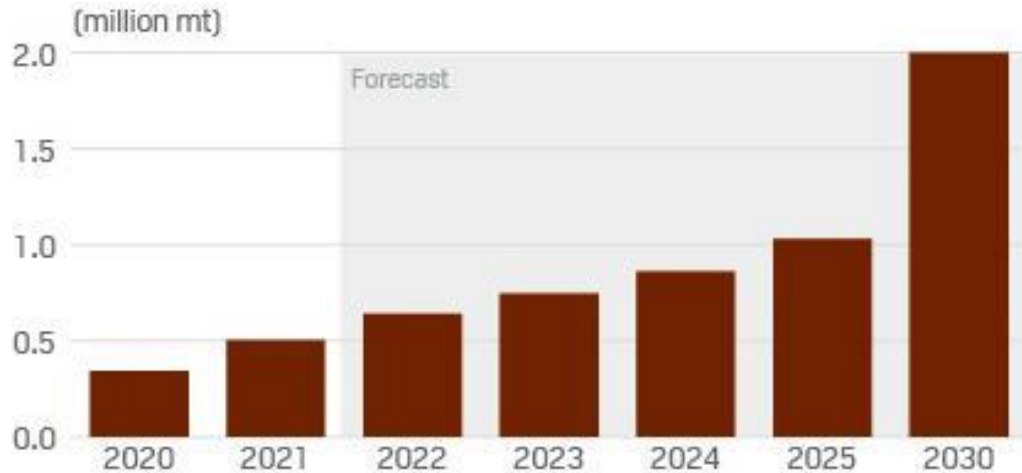
- No defined resources yet
- Hard rock lithium exploration projects
- Exploring in Canada





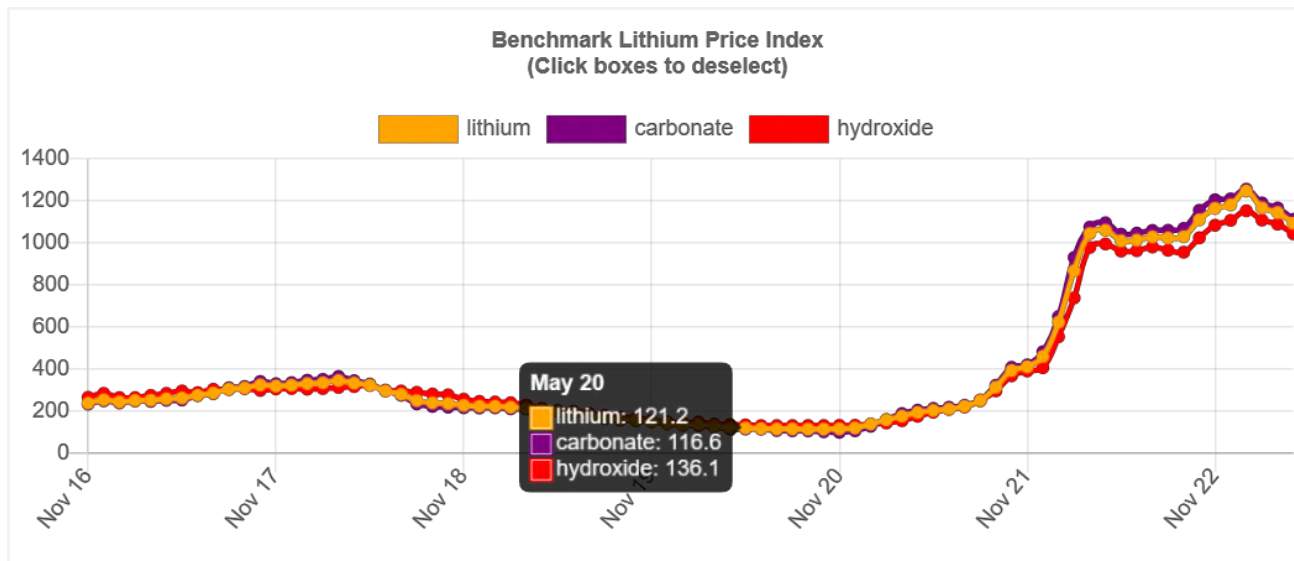
# PREDICTED LITHIUM DEFICIT = interest in exploration

## LITHIUM DEMAND FORECAST



**If all planned mines reach production by 2030, there will still be a >10% Lithium supply deficit**

## FUTURE LITHIUM DEMAND BY 2030



## LITHIUM PRODUCTS AND ASSETS

### Assets



### End-products



Hard-rock assets will keep accounting for most of the lithium output in the future, but all production routes—even those which have never operated at a commercial scale—will be necessary to mitigate the increasing supply deficit. Within the product base, there will be limited integrated hydroxide capacity, meaning converters will keep playing an essential role in the future.

Images and text (other than Li Price index graph) from infographic developed and designed by Henrique Ribeiro and Melenie Yuen for S&P Global, January 2022





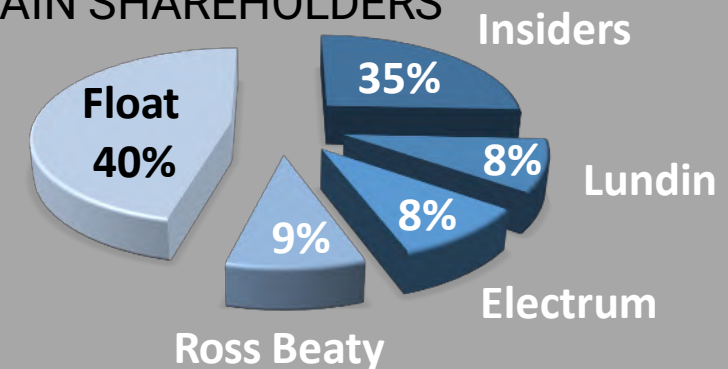


## Investing in...

- ❖ A Highly Experienced Team with a Pipeline of Projects in Lithium, Diamonds and Gold
- ❖ Near term Lithium news flow
- ❖ Advanced Stage Diamond Project with Value Upside
- ❖ A Company Positioned for both Strong Market Demand for Lithium and a Looming Global Shortage of Rough Diamonds

TSXV: NAR	As of February 1, 2023 unless otherwise labelled
Share Price	\$0.07 (as of Mar 22, 2023)
Market Cap	\$10 M
Issued	139 M
Options	9.2 M
Warrants	38.3 M <i>(33.8 M @ \$0.10, 4.6 M @ \$0.18)</i>
Fully Diluted	186.5 M

## MAIN SHAREHOLDERS



*\*Approximate due to rounding*





**Ken Armstrong**  
*President & CEO*

**Nick Thomas**  
*Community and Investor  
Relations Manager*



**North Arrow**  
MINERALS INC.

**TSXV: NAR**

Suite 960-789 West Pender Street  
Vancouver, BC  
Canada V6C 1H2  
Tel: +1.604.668.8354  
[info@northarrowminerals.com](mailto:info@northarrowminerals.com)  
[www.northarrowminerals.com](http://www.northarrowminerals.com)