



North Arrow

MINERALS INC.

Experienced
Northern Exposure

Canadian Lithium Projects

March 2024



North Arrow MINERALS INC.

FORWARD-LOOKING INFORMATION

This presentation contains projections and forward-looking information that involve various risks and uncertainties, including, without limitation, statements regarding the potential extent of mineralization, resources, reserves, exploration results and plans and objectives of North Arrow Minerals Inc. These risks and uncertainties include, but are not restricted to, the amount of geological data available, the uncertain reliability of drilling results and geophysical and geological data and the interpretation thereof and the need for adequate financing for future exploration and development efforts. There can be no assurance that such statements will prove to be accurate. Actual results and future events could differ materially from those anticipated in such statements. These and all subsequent written and oral forward-looking statements are based on the estimates and opinions of management on the dates they are made and are expressly qualified in their entirety by this notice. The Company assumes no obligation to update forward looking statements should circumstances or management's estimates or opinions change.

QUALIFIED PERSON
UNDER NI 43-101

Disclosure of a scientific or technical nature related to North Arrow's projects in this presentation has been reviewed and approved by Ken Armstrong, P.Geo. President and CEO of North Arrow and a Qualified Person under NI 43-101.

North Arrow is a Canadian company focused on the identification and evaluation of exploration opportunities in Canada.

North Arrow's management and directors have a successful track record of resource discovery and development in Canada's North.





LEADERSHIP TEAM & BOARD

Ken Armstrong (President, CEO, Director, P.Ge. and Qualified Person under NI 43-101) 25+ years exploration & evaluation experience w/ Diavik, Aber, and others. Director & Past President NWT & Nunavut Chamber of Mines. Director Cornish Metals.

Eira M. Thomas (Chair) Extensive exploration and development experience in Canada and Africa; Former officer &/or director Lucara, Suncor, Aber, Kaminak.

D. Grenville Thomas (Director) Founder of Aber Resources, discoverer of the Diavik Diamond Mine; Canadian Mining Hall of Fame inductee.

Christopher Jennings (Director) Founder of SouthernEra, consultant to Aber; formerly with International Corona, BP Minerals (Canada) and Falconbridge.

Blair Murdoch (Director) More than thirty years experience in senior management of private and public companies.

Torrie Chartier (Director) 25+ years of experience in northern mineral exploration and aviation industries.

Allison Rippin Armstrong (Advisor) 20+ years Canadian and international CSR & ESG experience.

WEALTH OF EXPERIENCE



Ken Armstrong and Gren Thomas at the LDG Project NT

NORTH ARROW PROJECT PIPELINE

Advanced/Discovery Stage Lithium

- 1 LDG Lithium (100%)**
Spodumene lithium pegmatite showings
- 2 MacKay Lithium (100%)**
Spodumene lithium pegmatite showings
- 3 DeStaffany (100%)**
Spodumene lithium pegmatite showings

Grassroots Lithium

- 4 Bathurst Inlet (100%)**
Pegmatites with unknown mineralogy



Oro - Hope Bay (100%)
Gold project 3km north of Agnico Eagle's Doris Mine

Advanced Stage Diamonds

- 1. Naujaat (60%)**
Significant diamond inventory; High-value fancy orange & yellow diamonds

Discovery Stage Diamonds

- 2. Loki (100%)**
Kimberlite discovery - 2018
- 3. Pikoo (100%)**
Kimberlite discovery - 2016

HARD ROCK LITHIUM PROJECT PIPELINE

Advanced/Discovery Stage Lithium

1 **LDG Lithium (100%)**
Spodumene lithium pegmatite showings

2 **MacKay Lithium (100%)**
Spodumene lithium pegmatite showings

3 **DeStaffany (100%)**
Spodumene lithium pegmatite showings



Grassroots Lithium

4 **Bathurst Inlet (100%)**
Pegmatites with unknown mineralogy

A four-project portfolio for ~\$60,000 in acquisition costs including staking

Three properties with drill ready spodumene pegmatite targets

NAR LITHIUM PROJECTS IN THE NWT

Advanced/Discovery
Stage Lithium

1 LDG Lithium
(100%)
*Spodumene lithium
pegmatite project*

2 MacKay Lithium
(100%)
*Spodumene lithium
pegmatite project*

3 DeStaffany
(100%)
*Spodumene lithium
pegmatite project*

Lithium Pegmatites
Found most often within meta-
sediments near to a fertile, highly
fractionated, S-type granitic pluton.
This late-stage melt crystallizes as
rare-element-enriched dikes
external to the pluton
**SPODUMENE-BEARING
PEGMATITES!**

The MacKay- Aylmer Pegmatite Province

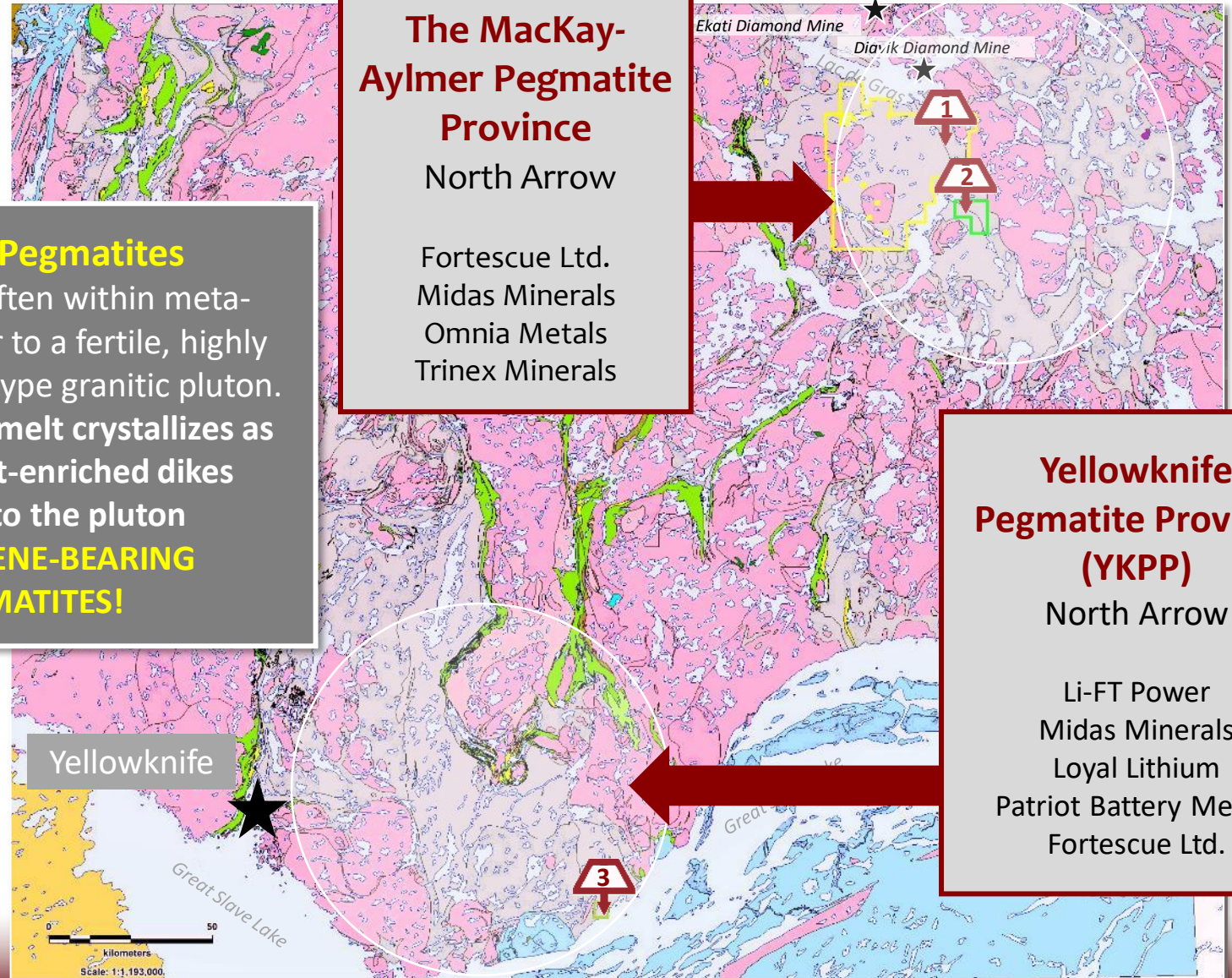
North Arrow

Fortescue Ltd.
Midas Minerals
Omnia Metals
Trinex Minerals

Yellowknife Pegmatite Province (YKPP)

North Arrow

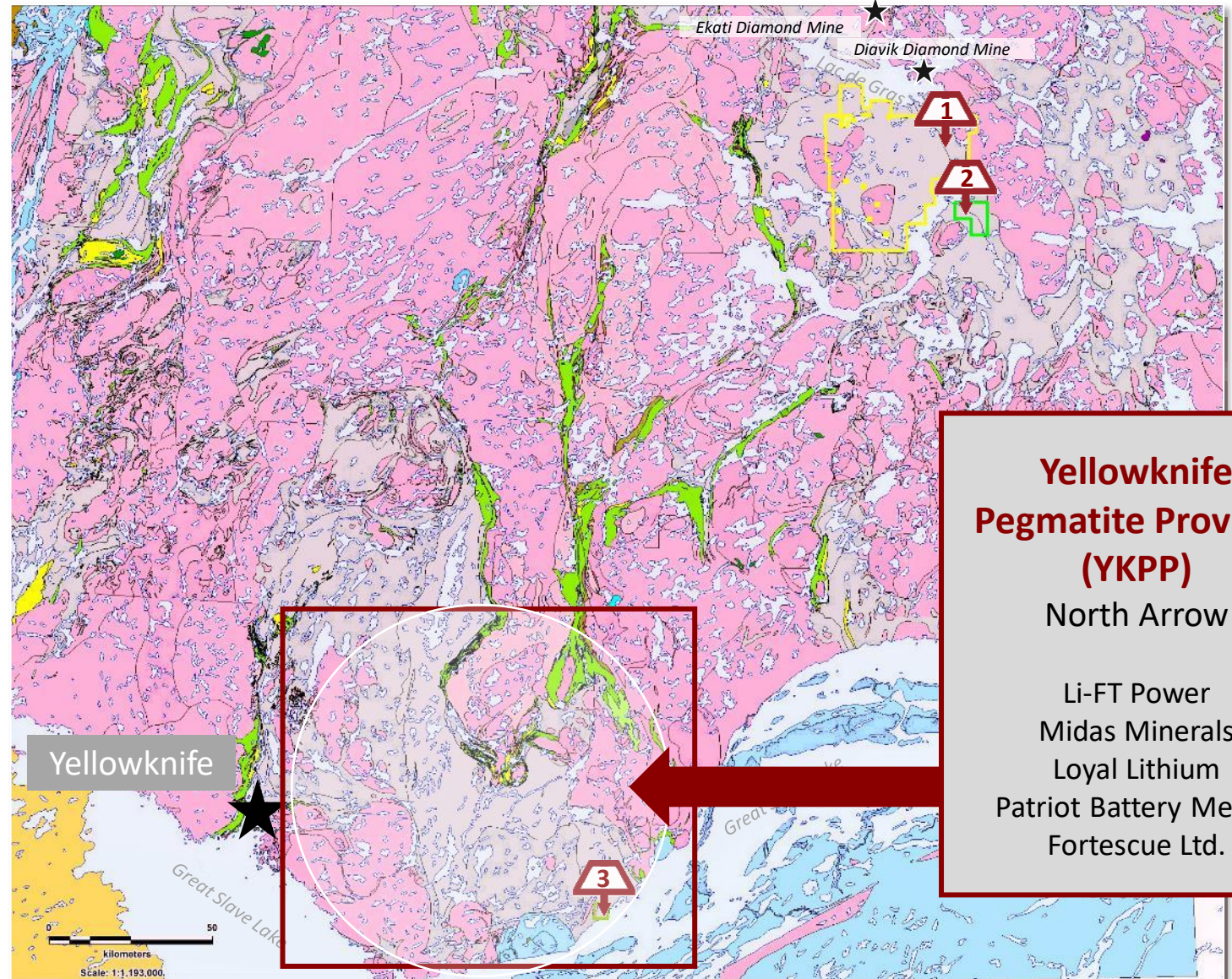
Li-FT Power
Midas Minerals
Loyal Lithium
Patriot Battery Metals
Fortescue Ltd.



DESTAFFANY LITHIUM PROJECT

Advanced/Discovery
Stage Lithium

3
↓
DeStaffany
(100%)
*Spodumene lithium
pegmatite project*



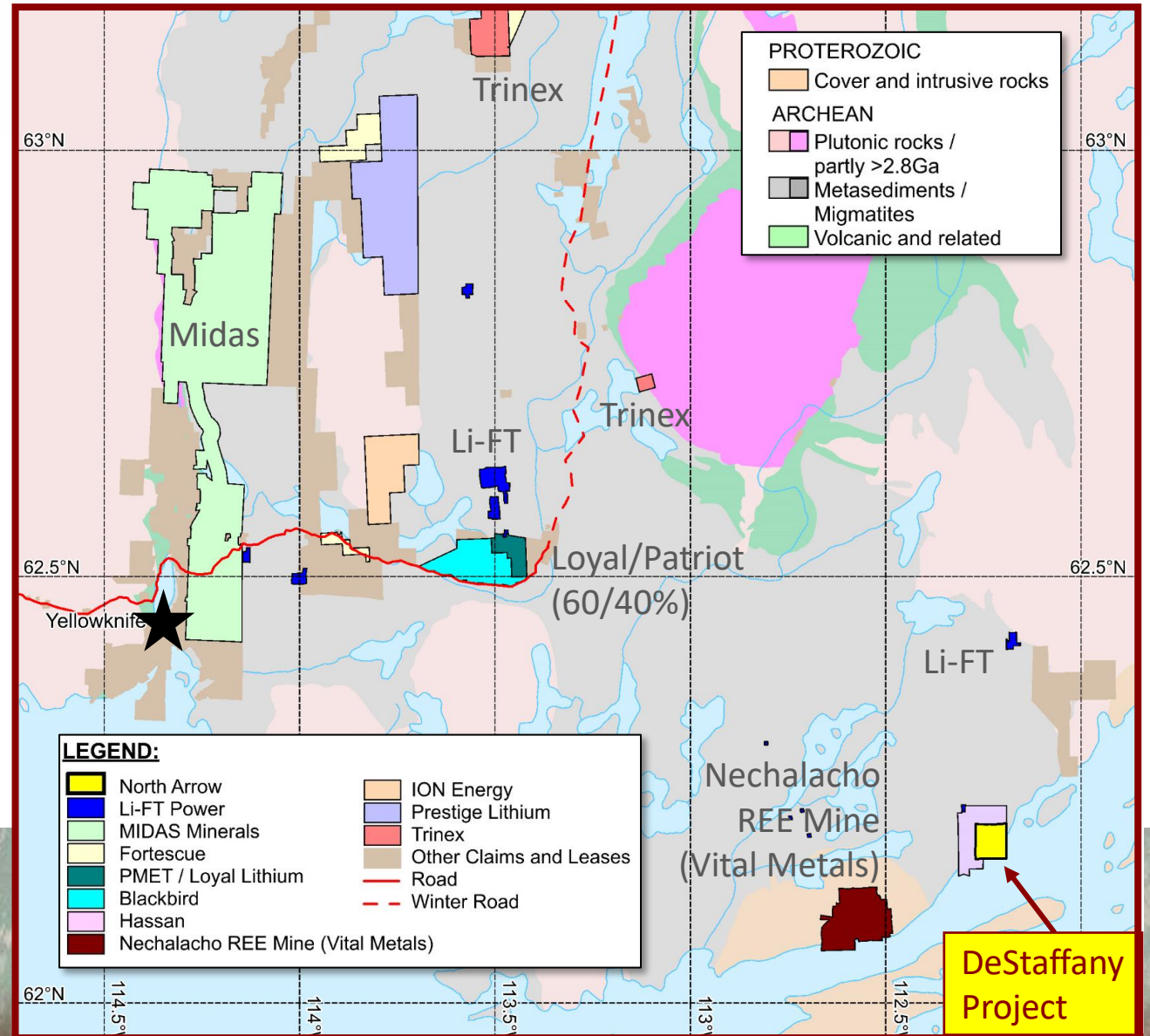
**Yellowknife
Pegmatite Province
(YKPP)**

North Arrow

Li-FT Power
Midas Minerals
Loyal Lithium
Patriot Battery Metals
Fortescue Ltd.

YELLOWKNIFE PEGMATITE PROVINCE (YPP)

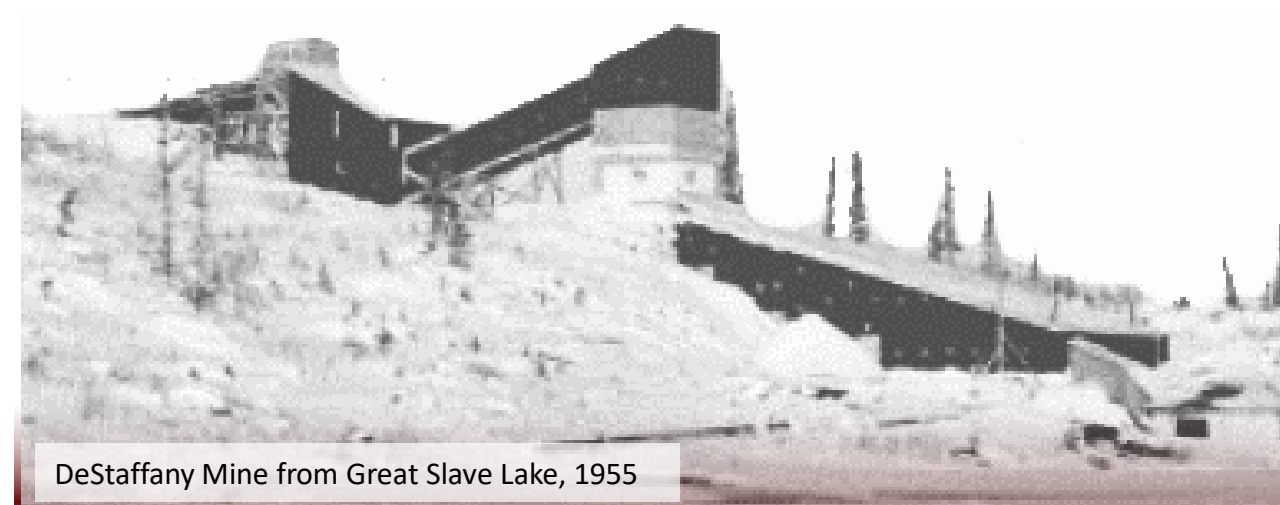
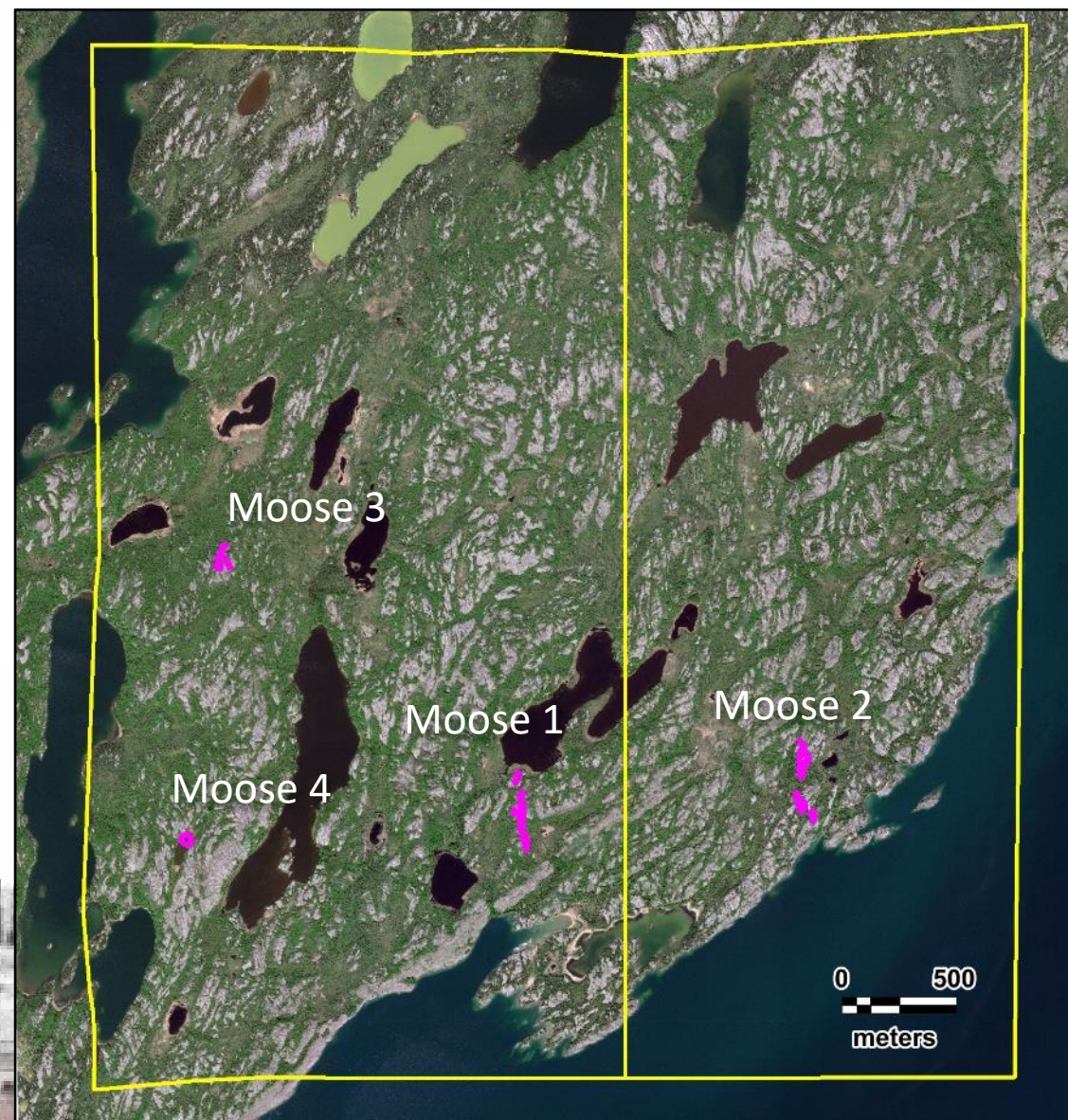
- Companies currently conducting exploration: Li-FT Power, Fortescue, Loyal Lithium, Midas Minerals, Ion Energy, Patriot Battery Metals, Blackbird Critical Metals (formerly GAMA), Prestige Lithium
- NAR team has past Li, Ta and REE experience in the region with DeStaffany and Thor Lake
- DeStaffany Project 115km East of Yellowknife and includes at least four spodumene pegmatites





DESTAFFANY LITHIUM PROJECT

- Moose 1 and Moose 2 spodumene pegmatites
- >350m strike length
- Up to 30m wide
- <500m from Great Slave Lake
- Moose 2 was test mined for Ta, Nb, Sn in the 1940's & 50's but **never evaluated for lithium**
- NAR "Re-discovered" Moose 3 and Moose 4 in 2023
- Channel samples Moose 1: **1.5% Li₂O / 7.5m**
- Channel samples Moose 2: **1.6% Li₂O / 7.0m**
- Spodumene is low Fe (~0.25% Fe₂O₃); amenable to optical sorting

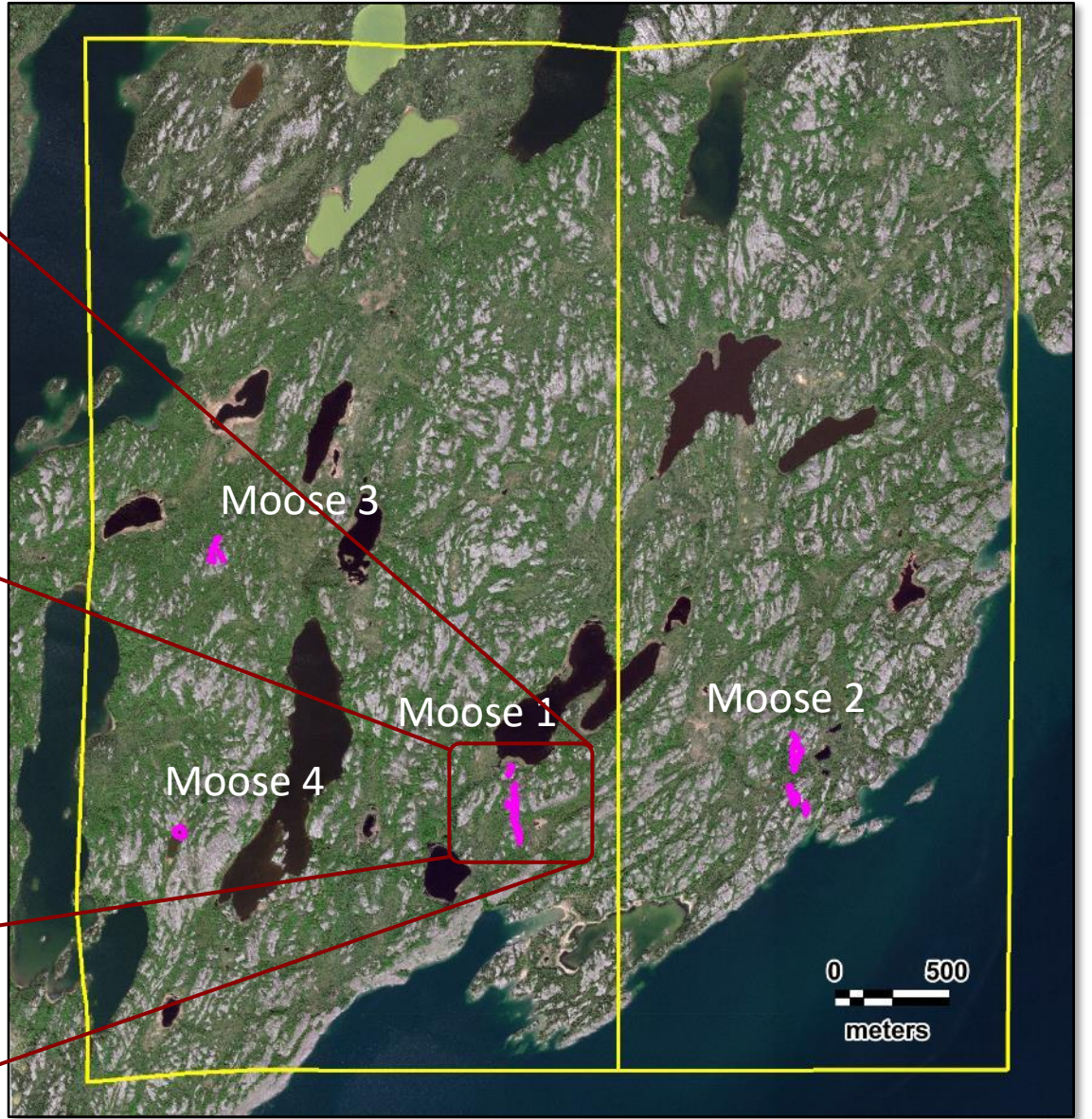
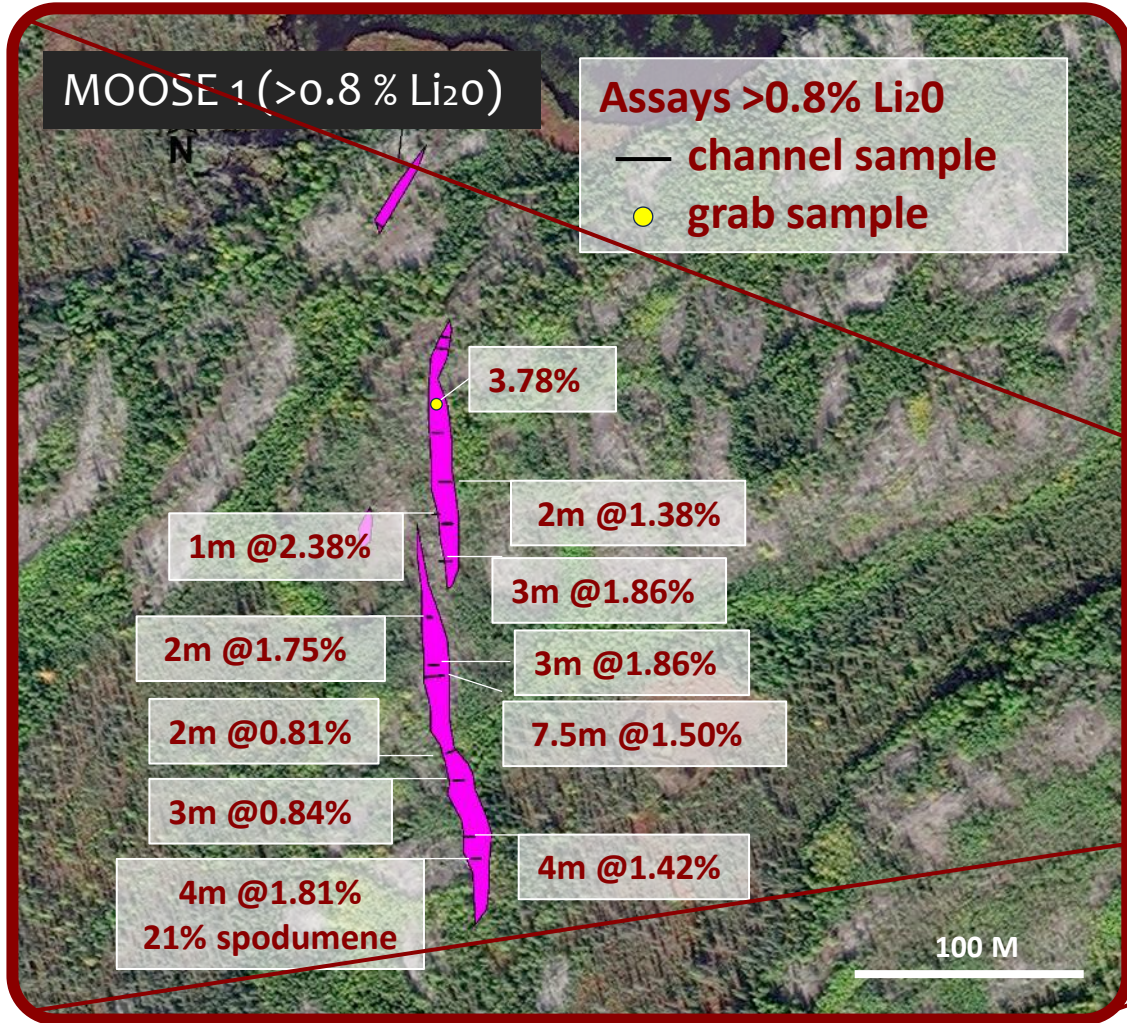


DeStaffany Mine from Great Slave Lake, 1955



CHANNEL SAMPLE RESULTS

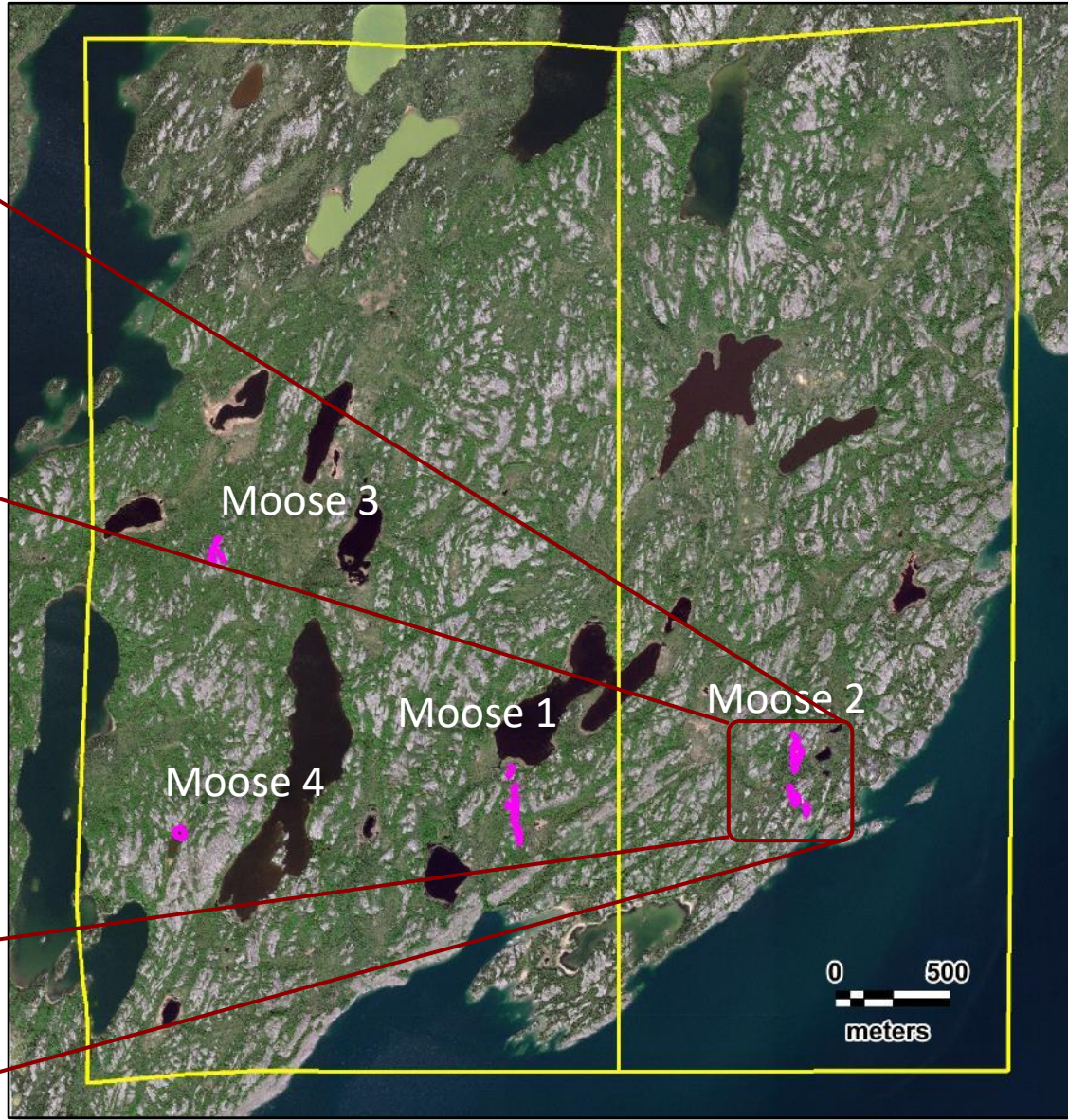
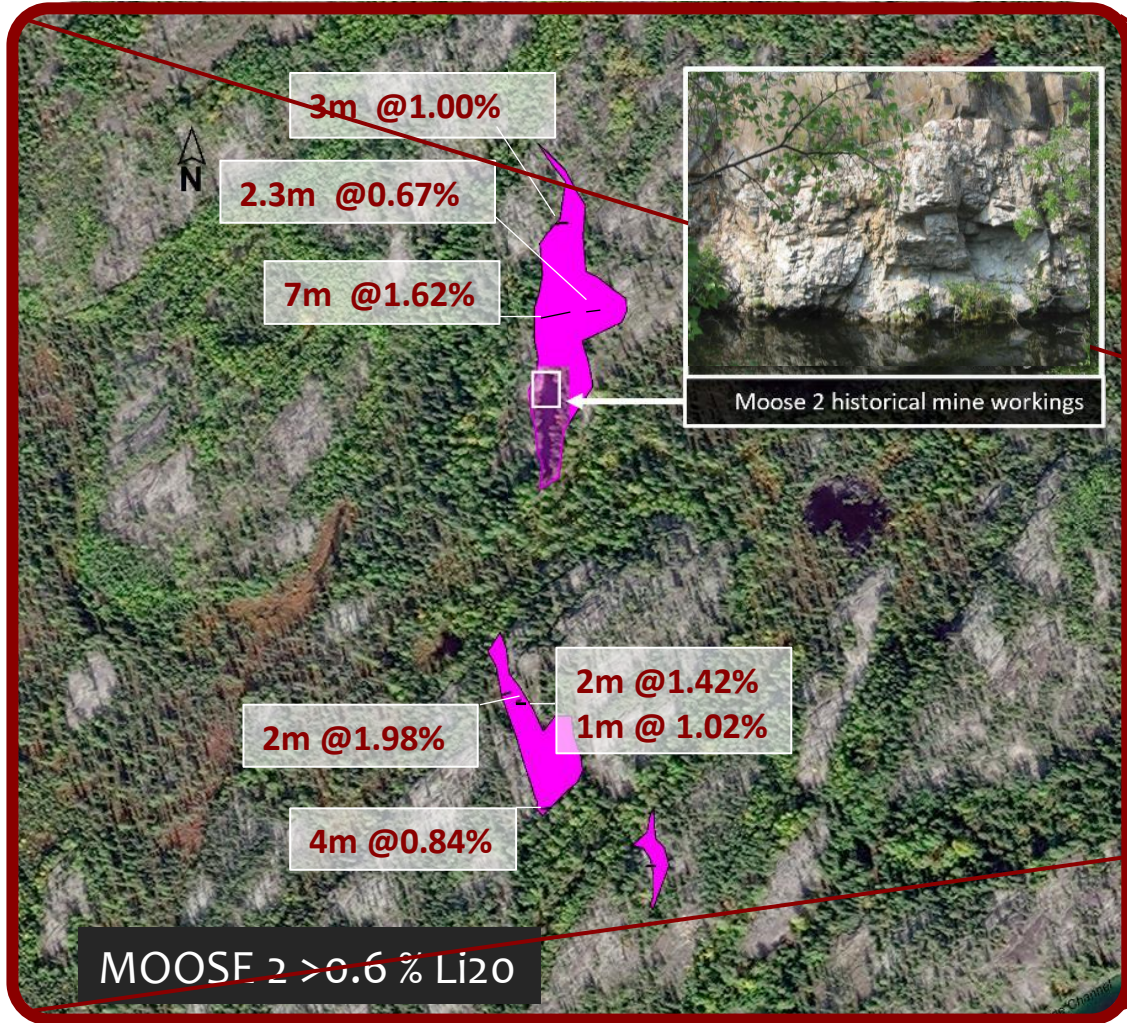
North Arrow MINERALS INC.





CHANNEL SAMPLE RESULTS

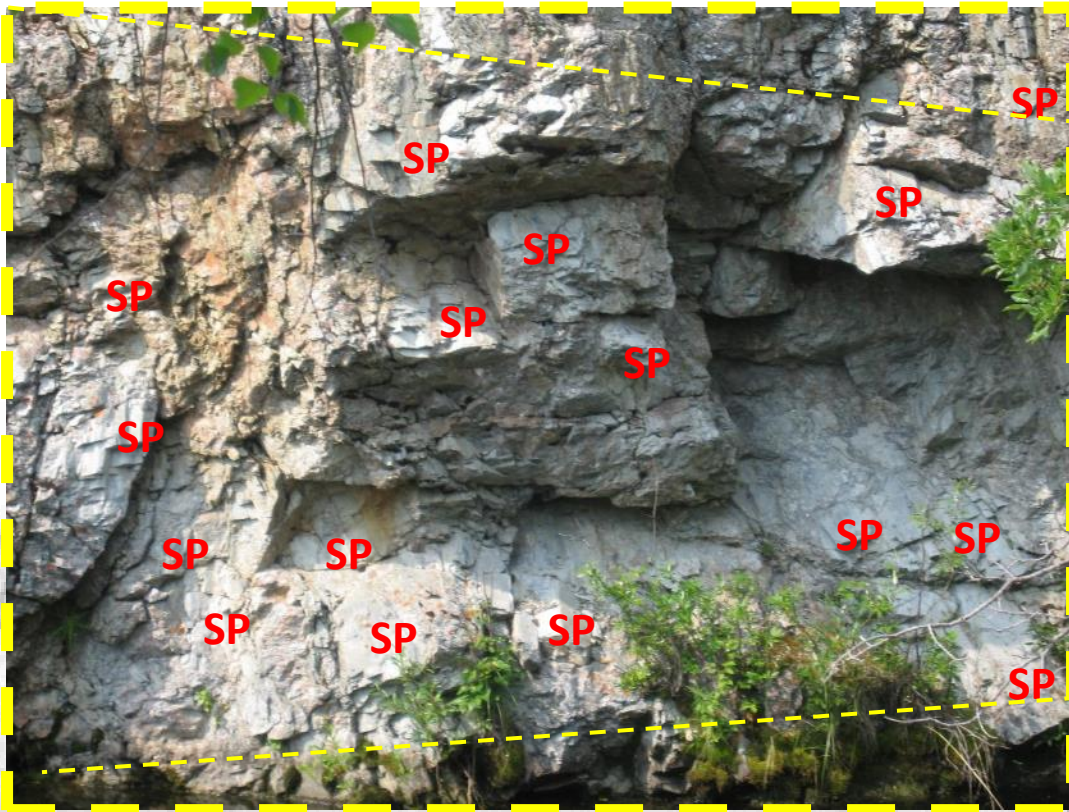
North Arrow MINERALS INC.



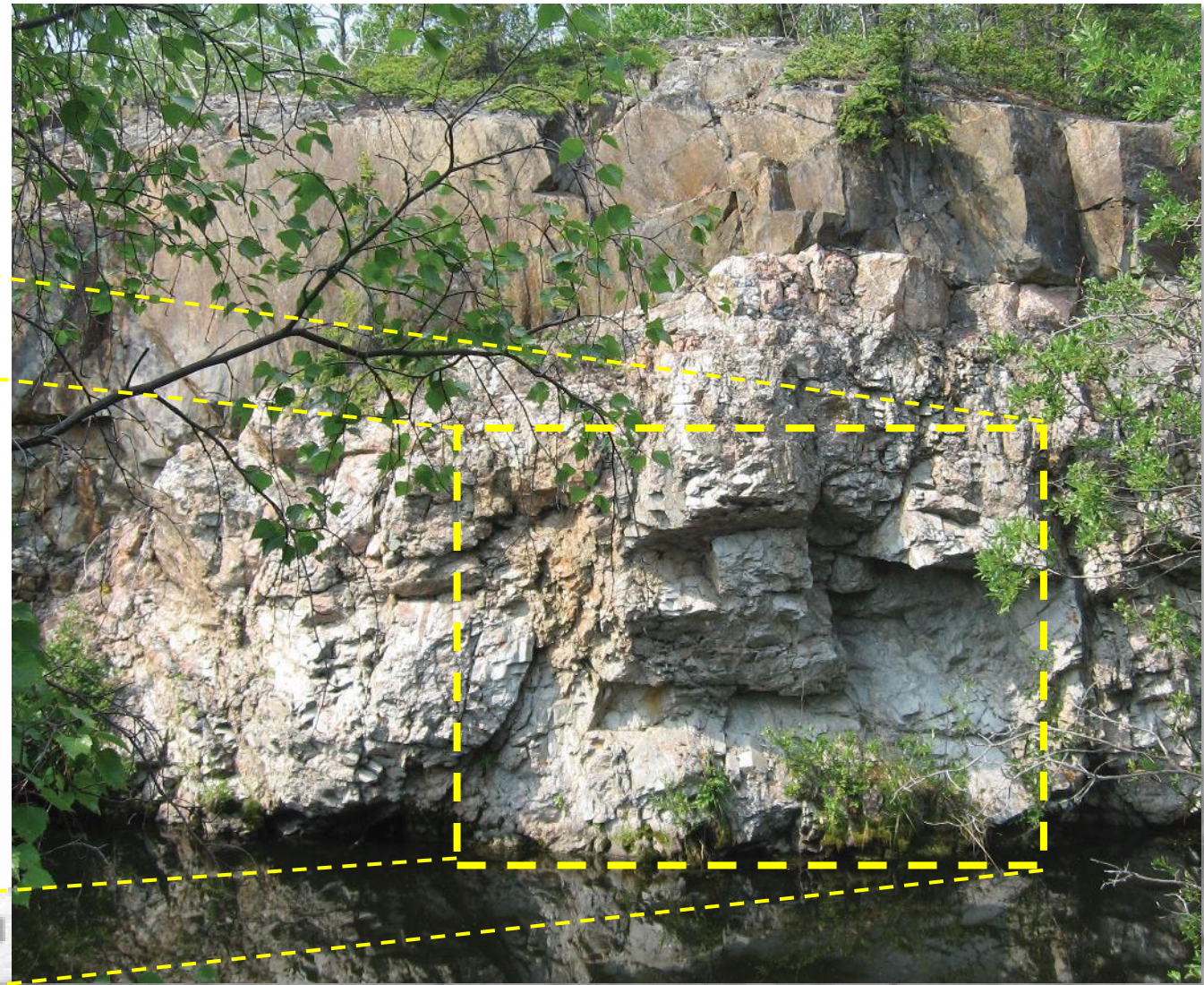


MOOSE 2 PEGMATITE – Historic Mining

- Historic mining focused on recovering Ta and Nb
- Megacrystic (up to 1m) spodumene in pit wall
- Spodumene not targeted by past mining
- Pegmatite dips 50-80 degrees to the west (away from view on right)



SP = SPODUMENE (Field of view height ~4m)



Megacrystic spodumene in pit wall (Approximate wall height: 8m)



DESTAFFANY PROJECT – Way Forward 2024

Can the Moose pegmatites produce a marketable spodumene concentrate that could be shipped south by barge and rail?



Completed 2023:

- Mapping / channel sampling, prospecting.
- Mineral characterization studies.
- Permits in place for camp and drilling.

2024 Way Forward:

- Delineation drilling to define strike & depth extent of spodumene zones.
- Work to define a resource.



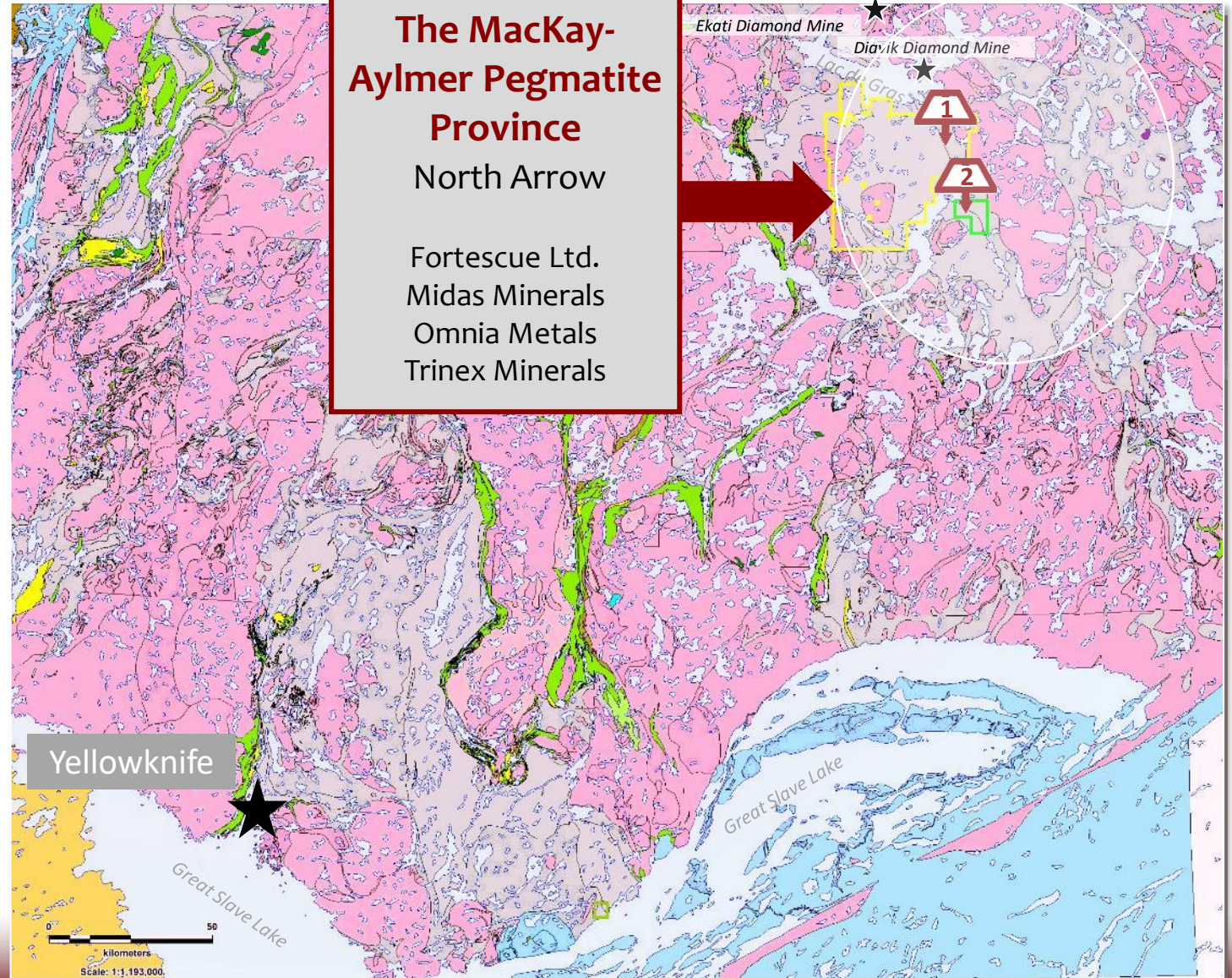
Great Slave Lake Barge

LDG & MACKAY LITHIUM PROJECTS

Advanced/Discovery
Stage Lithium

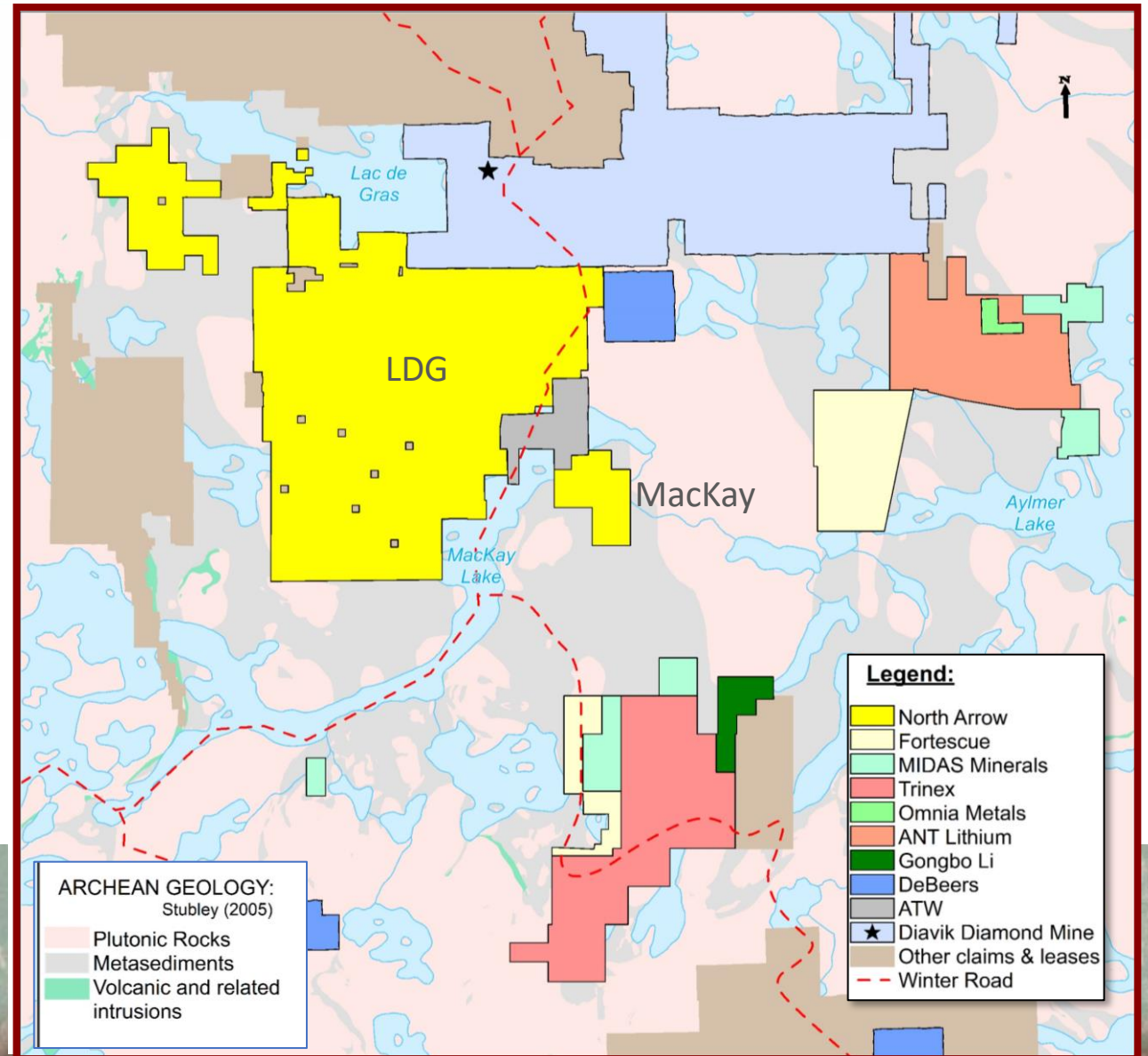
1 **LDG Lithium**
(100%)
Spodumene lithium
pegmatite showings

2 **Mackay Lithium**
(100%)
Spodumene lithium
pegmatite showings



MACKAY-AYLMER PEGMATITE PROVINCE

- Identical geological environment to the Yellowknife Pegmatite Province - same rock types, same age, same size potential
- North Arrow's LDG and MacKay projects host never-before drilled, spodumene pegmatites adjacent to the winter road connecting Yellowknife with Lac de Gras diamond mines
- Other companies currently conducting exploration include Fortescue, Midas Minerals, Trinex, Omnia Metals, and Ant Lithium

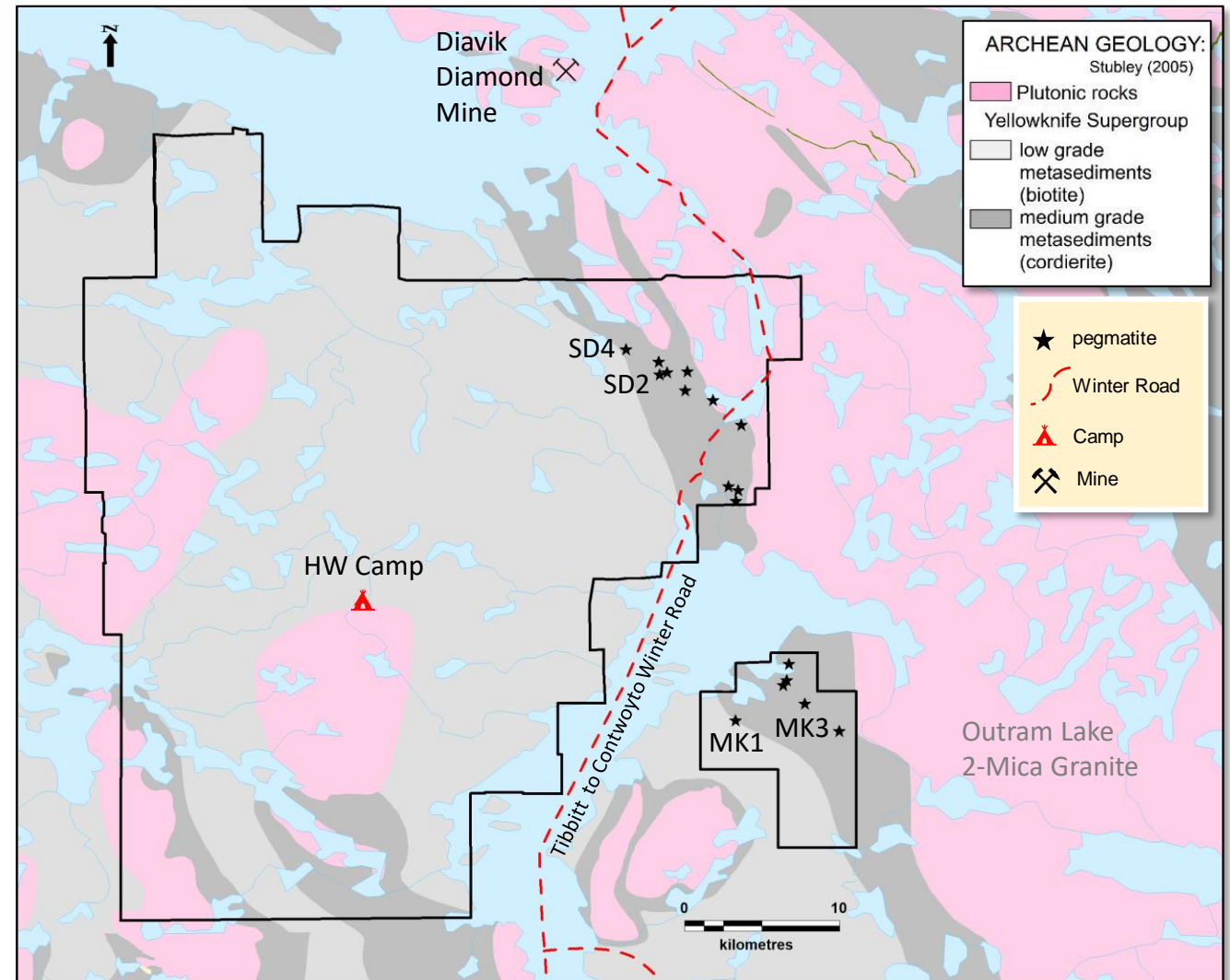




LDG & MACKAY LITHIUM PROJECTS – NAR 100%

North Arrow MINERALS INC.

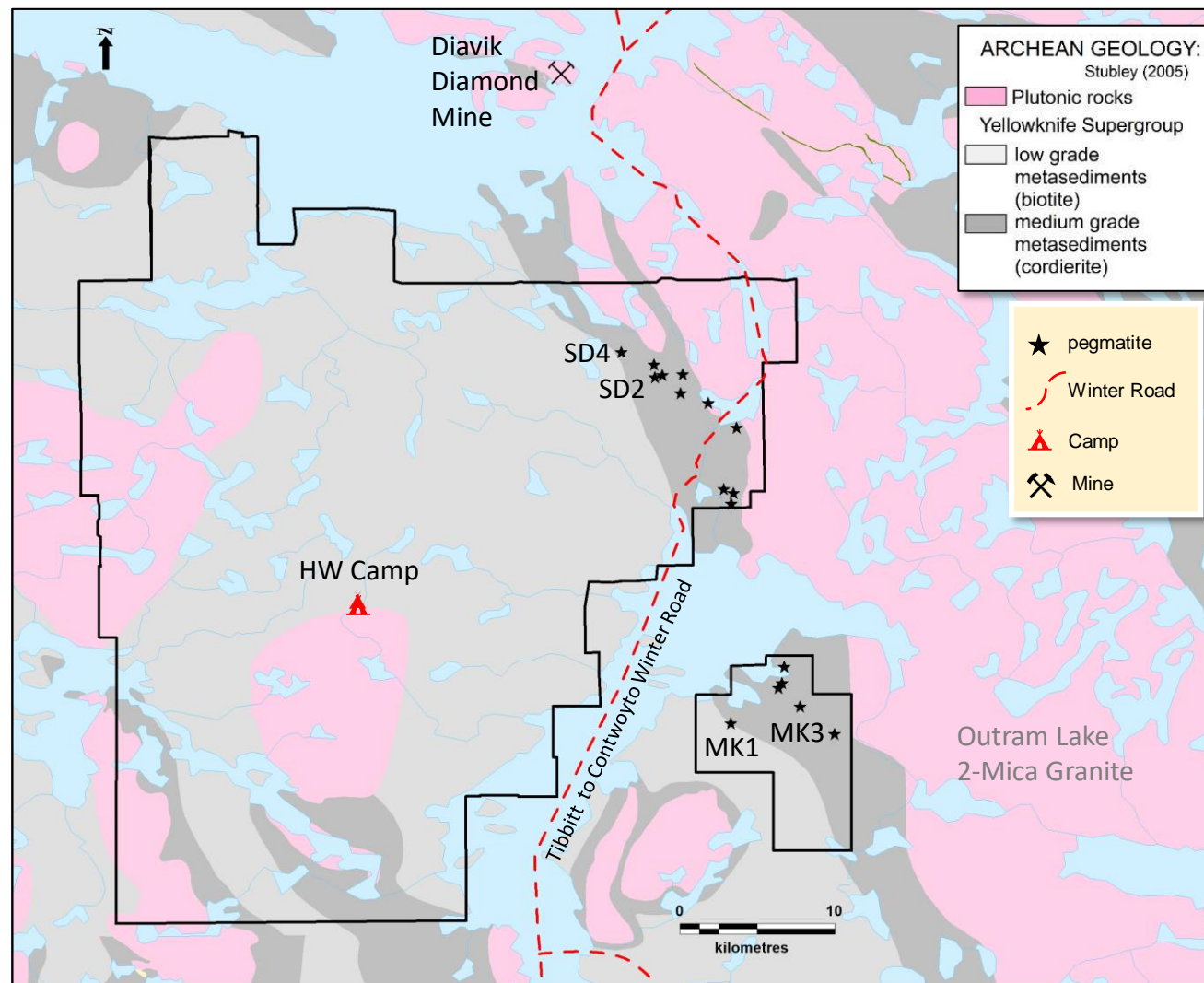
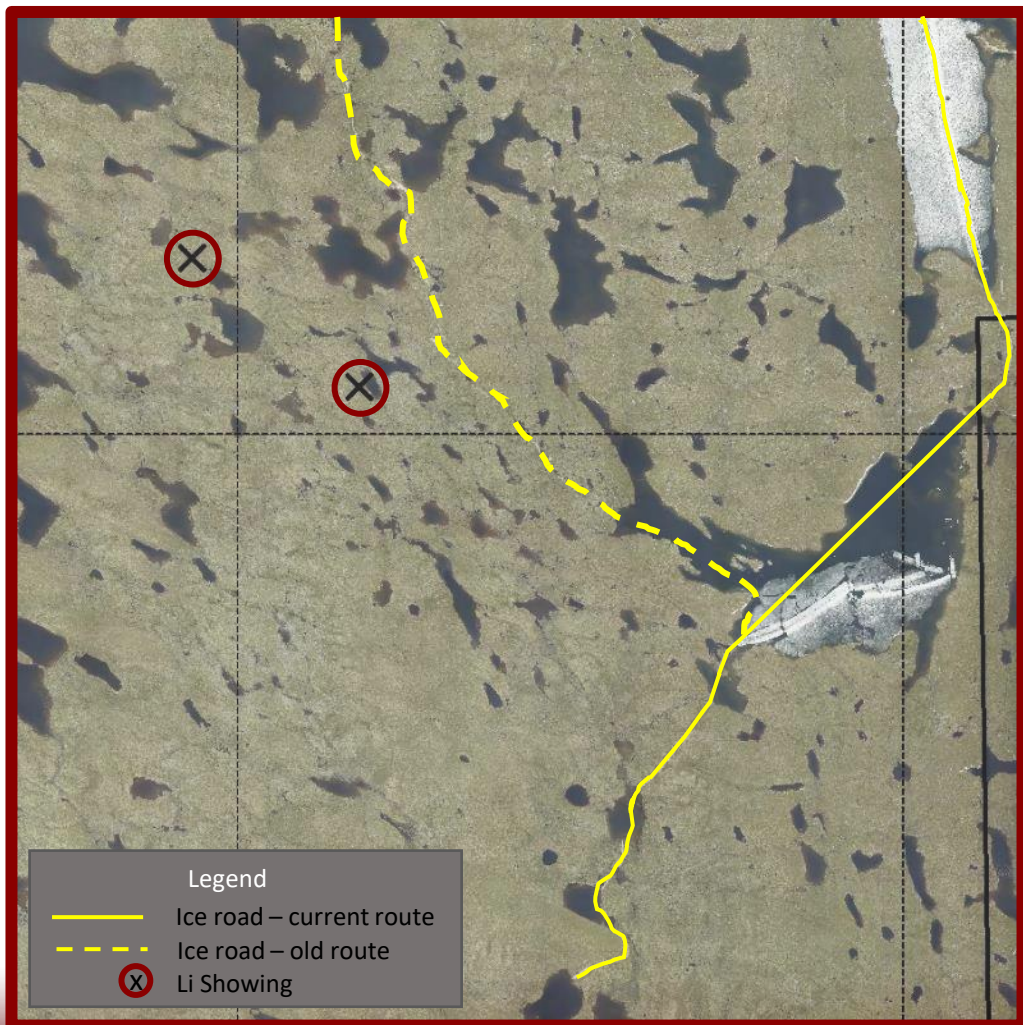
- Four drill ready spodumene pegmatites
- Multiple additional prospective pegmatites
- Located within kilometres of winter road
- Same setting and potential as the Yellowknife Pegmatite Province
- Combined ~30km strike length of prospective metasediments adjacent to fertile, 2-mica Outram Granite
- Drilling permits and exploration camp are in place





LDG LITHIUM – SD2 and SD4 Spodumene Pegmatites

North Arrow MINERALS INC.

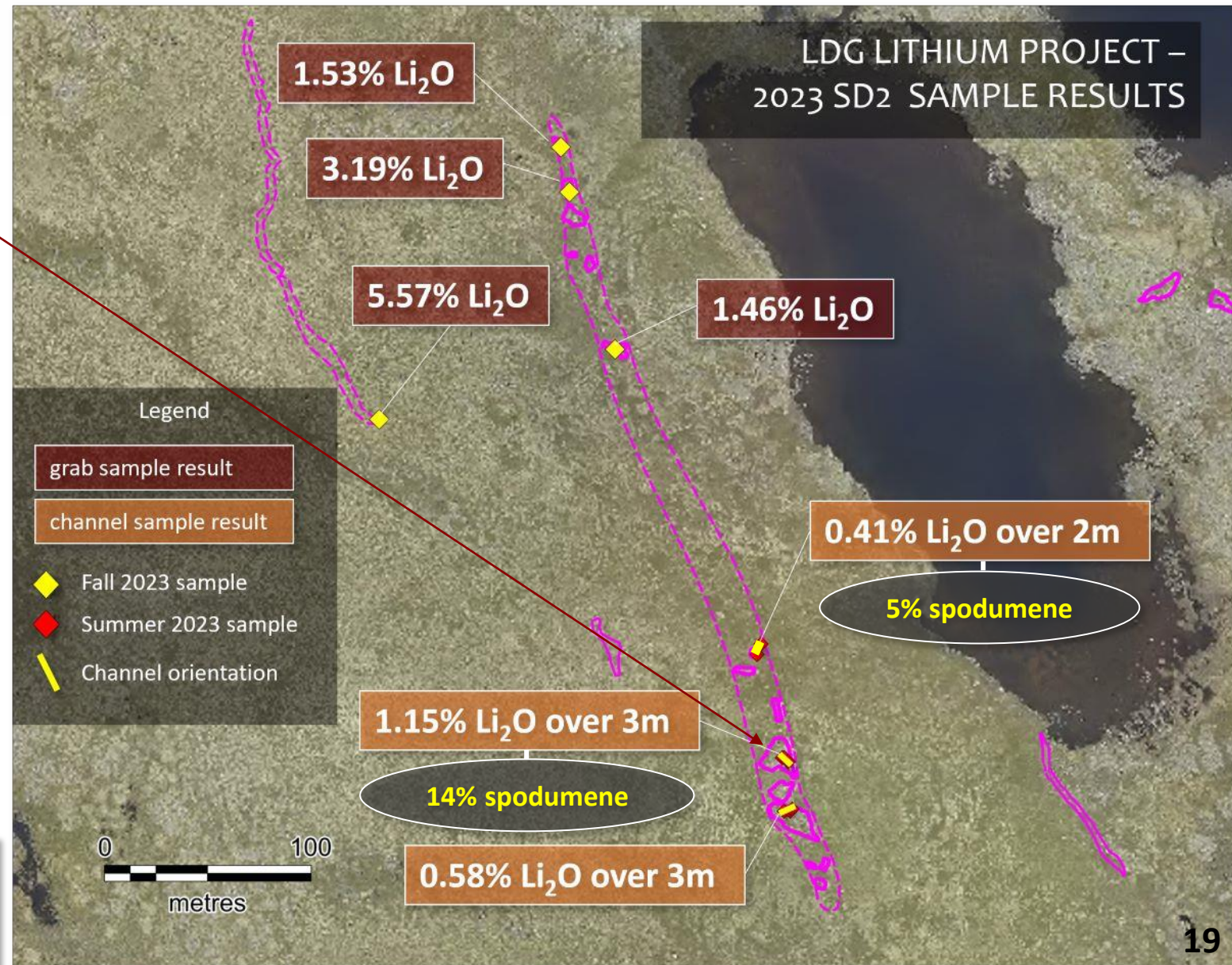




SD2 SPODUMENE PEGMATITES



Mapping / prospecting has identified at least 3 subparallel pegmatites including the main showing up to 20m wide and 500m in length.





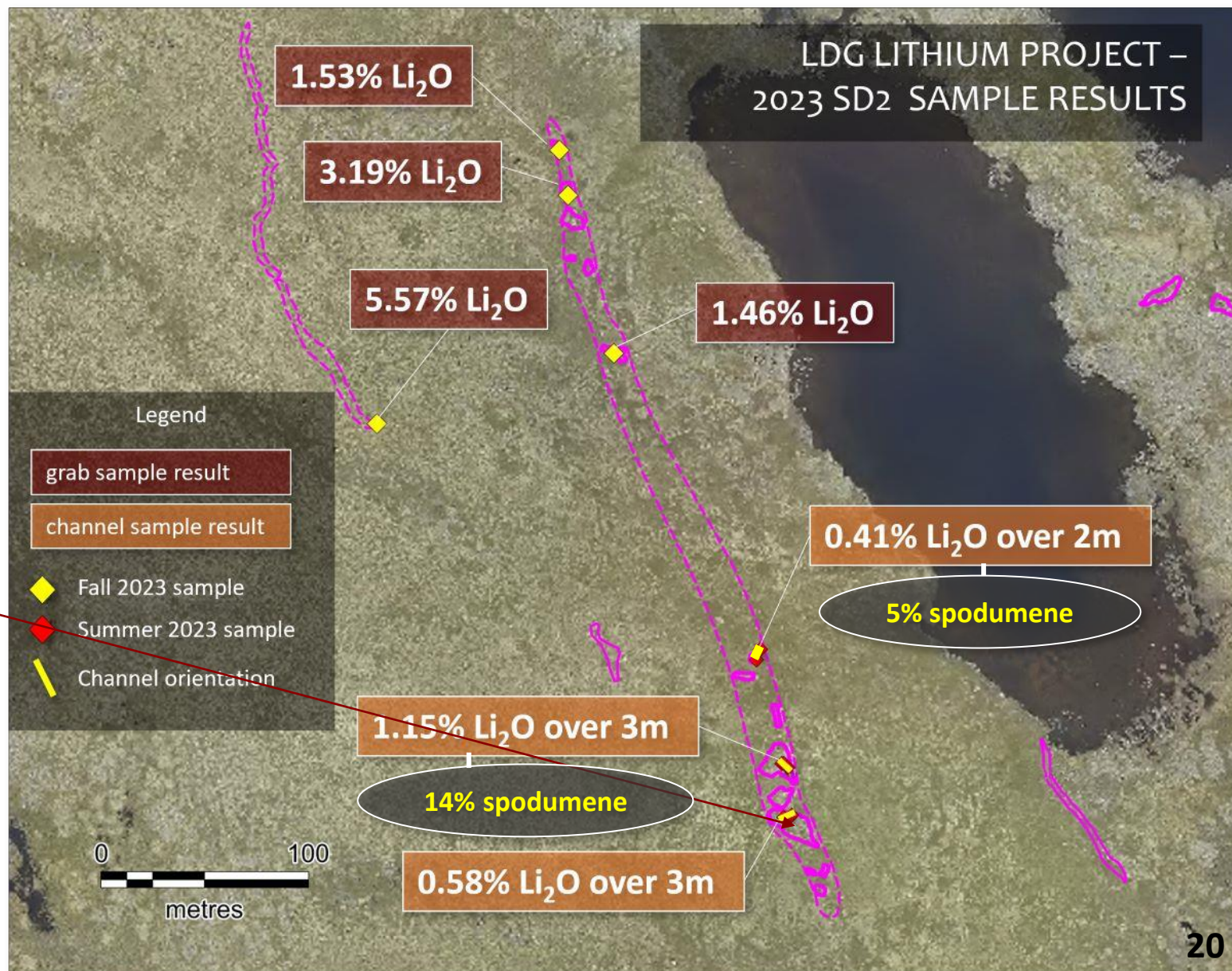
SD2 SPODUMENE PEGMATITES

North Arrow
MINERALS INC.

LDG LITHIUM PROJECT –
2023 SD2 SAMPLE RESULTS



Abundant coarse spodumene.





SD2 SPODUMENE PEGMATITE – TERRAIN

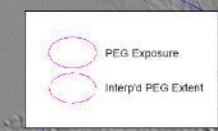
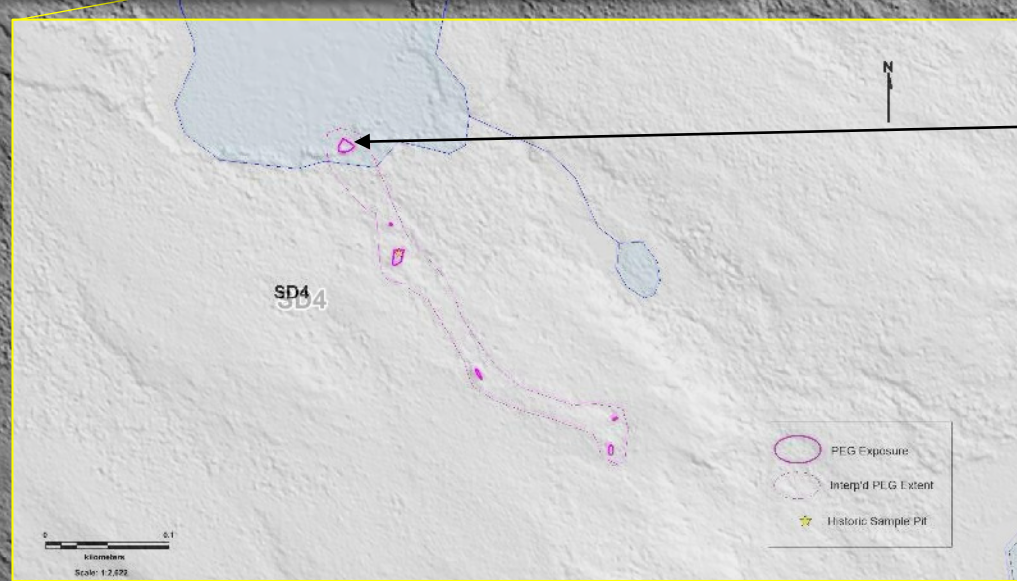
SD4





SD4 PEGMATITE

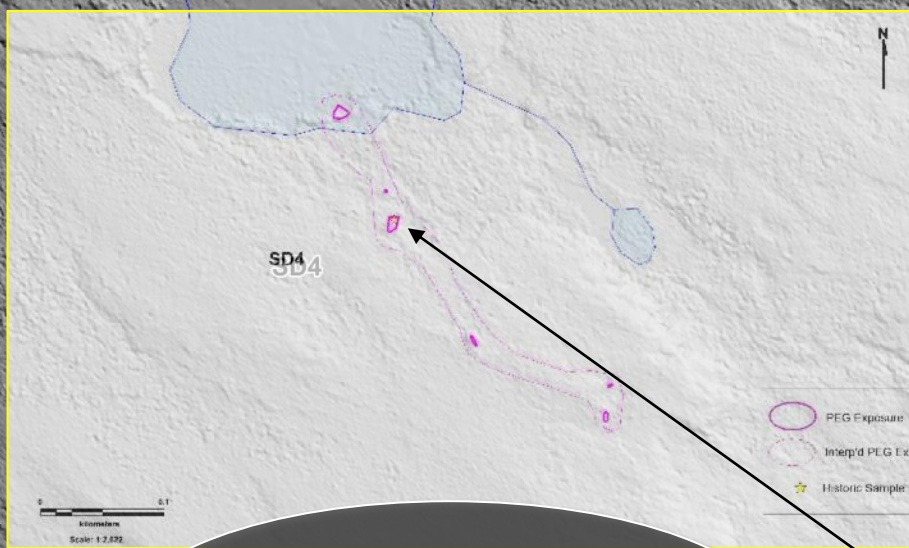
- 5 of 7 representative grab samples returned from 1.05% to 2.17% Li_2O .
- Average 14% spodumene.
- Interpreted as steeply dipping (75-80 degrees).
- 10-20 m wide and over 400 m in strike length.





SD4 PEGMATITE

- 5 of 7 representative grab samples returned from 1.05% to 2.17% Li_2O .
- Average 14% spodumene.
- Interpreted as steeply dipping (75-80 degrees).
- 10-20 m wide and over 400 m in strike length.



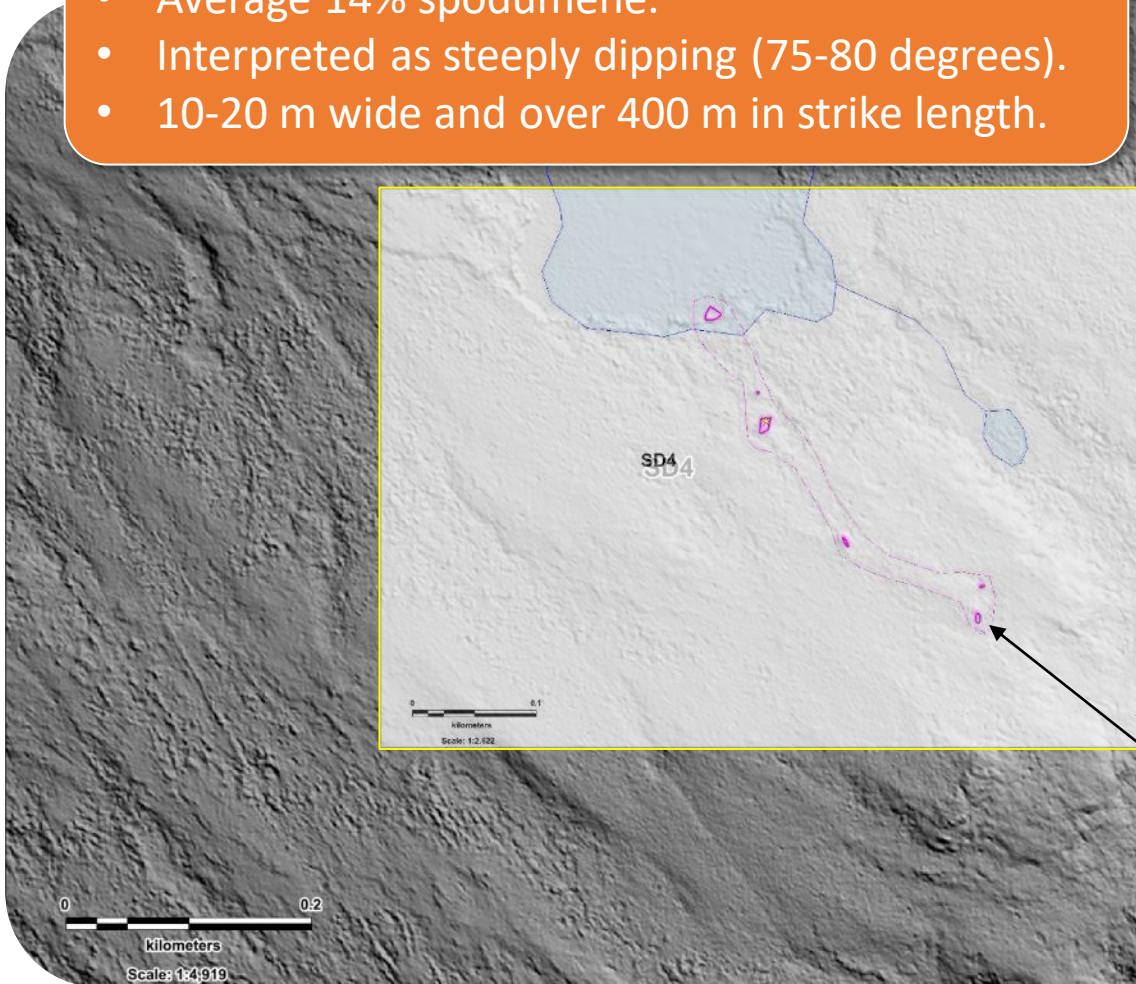
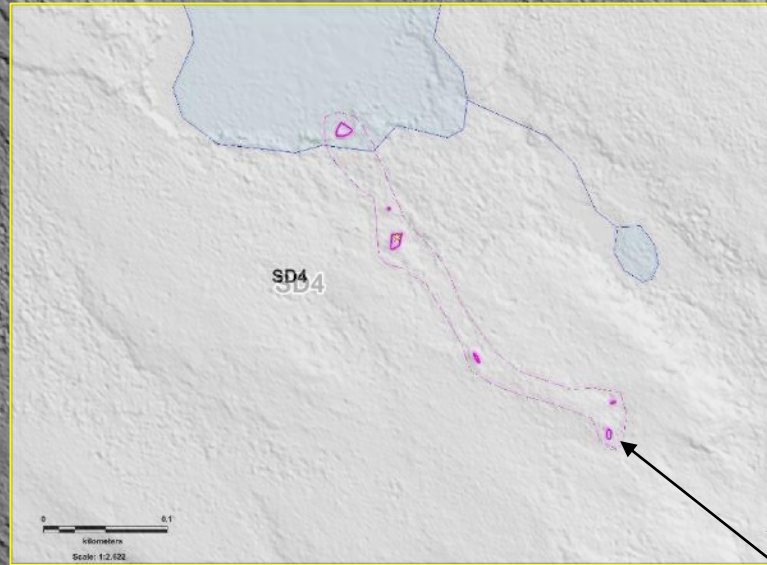
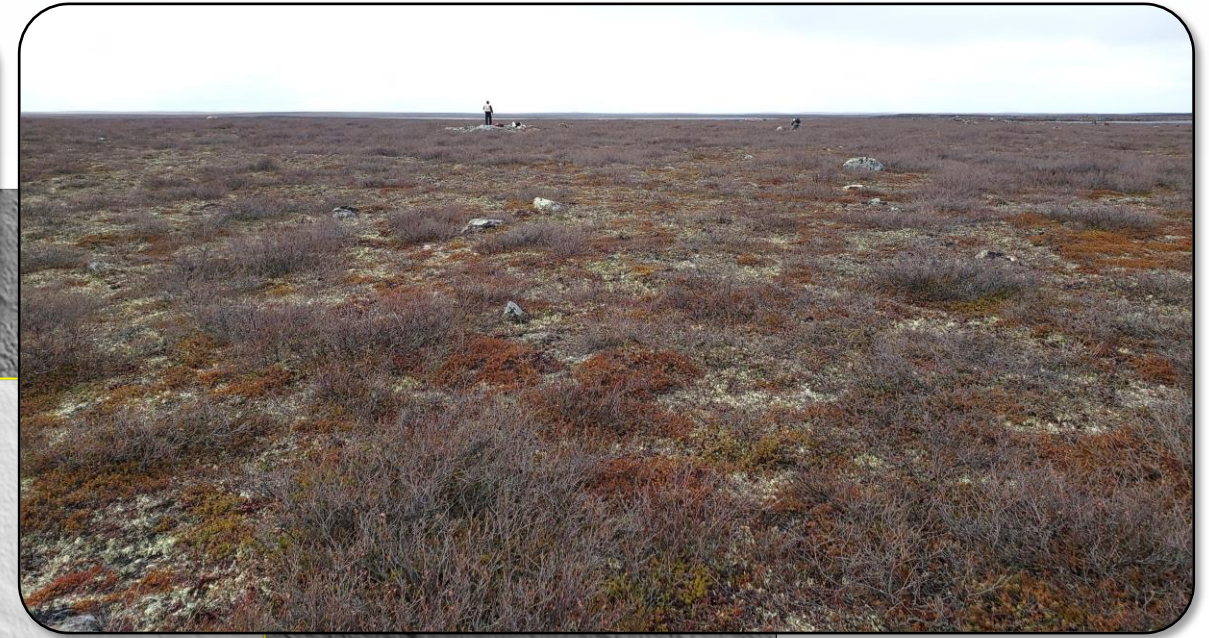
Composite sample
1.10% Li_2O
13% spodumene (XRD)





SD4 PEGMATITE

- 5 of 7 representative grab samples returned from 1.05% to 2.17% Li_2O .
- Average 14% spodumene.
- Interpreted as steeply dipping (75-80 degrees).
- 10-20 m wide and over 400 m in strike length.

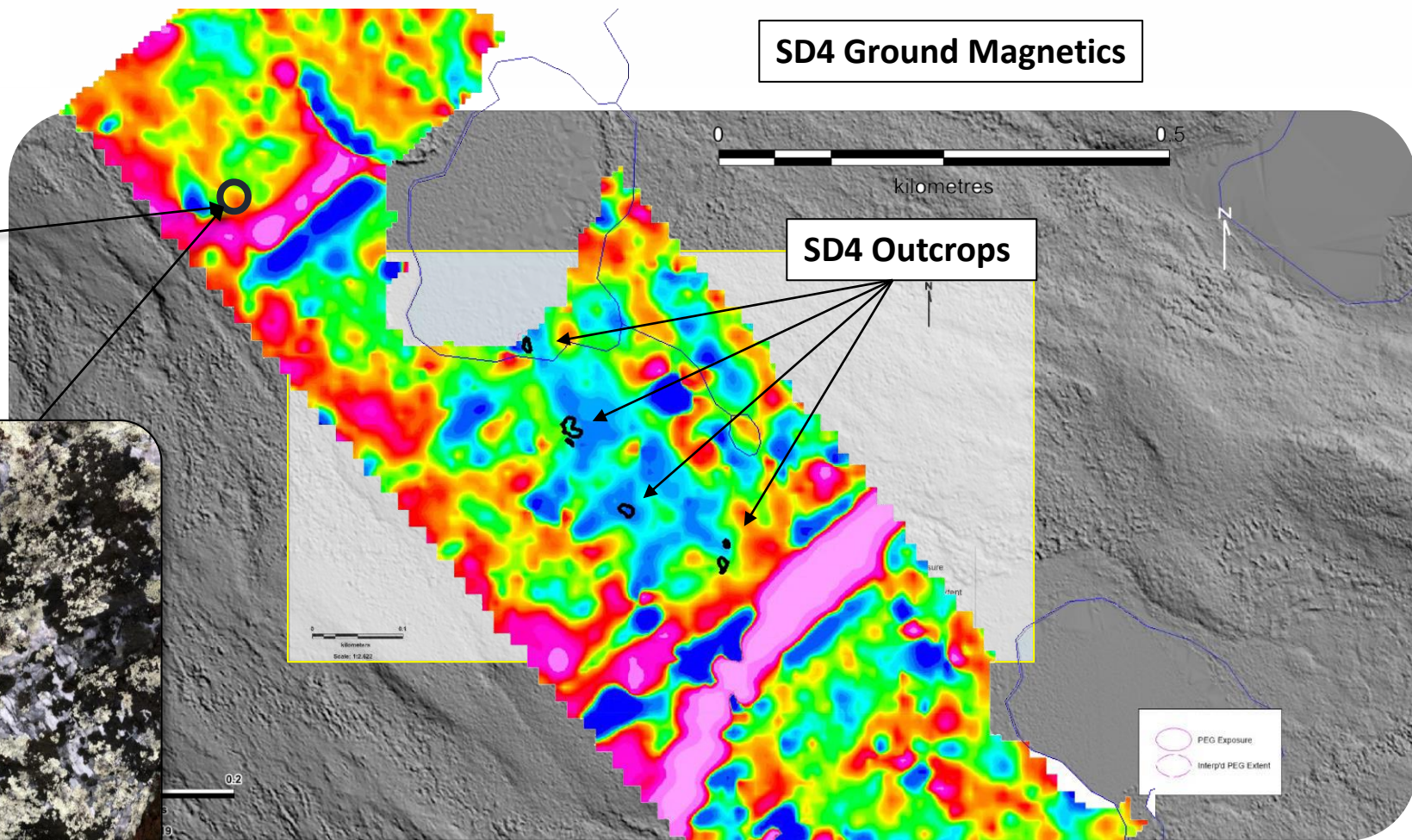




SD4 PEGMATITE – Ground Magnetics & Boulders



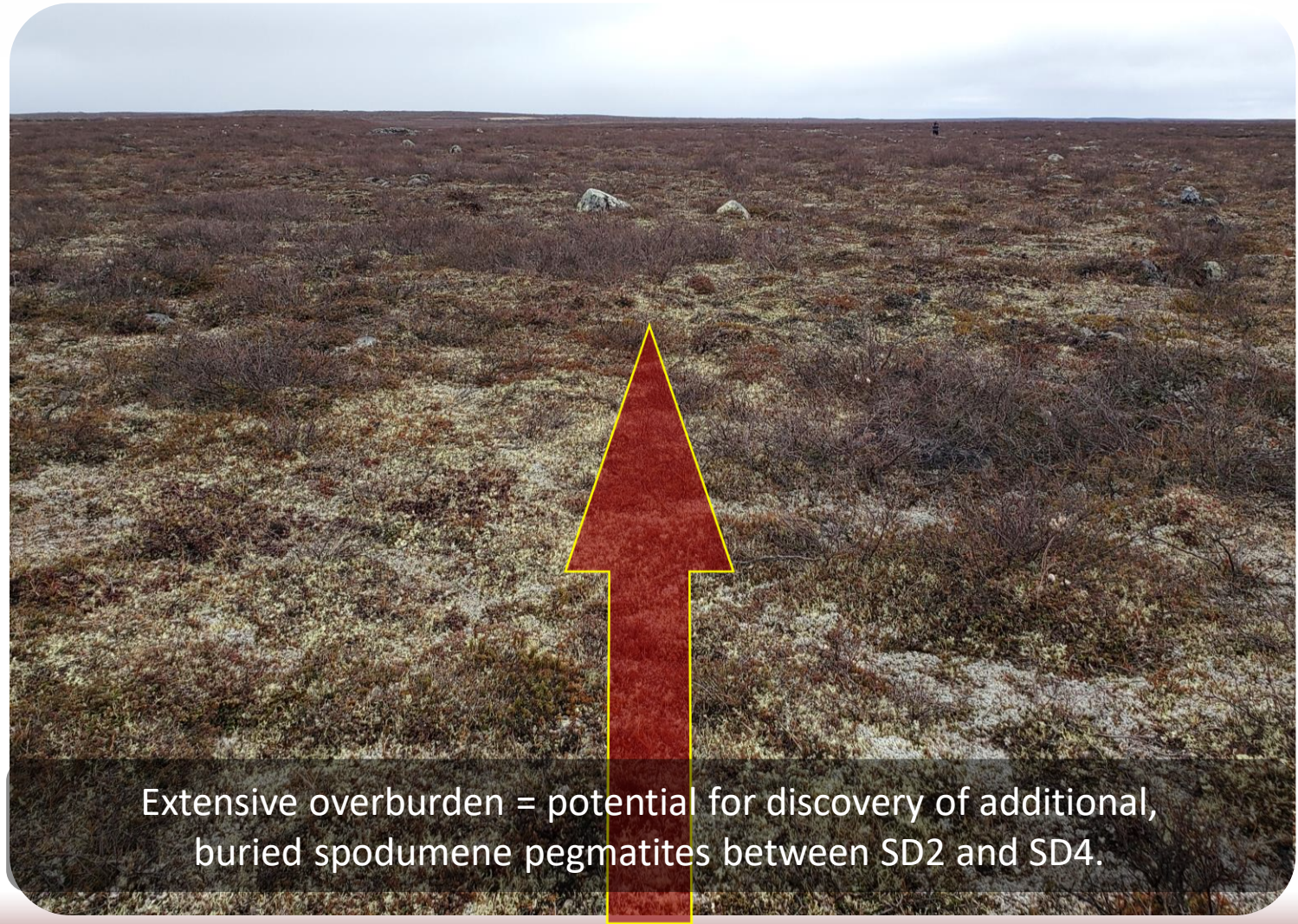
4.06% Li₂O



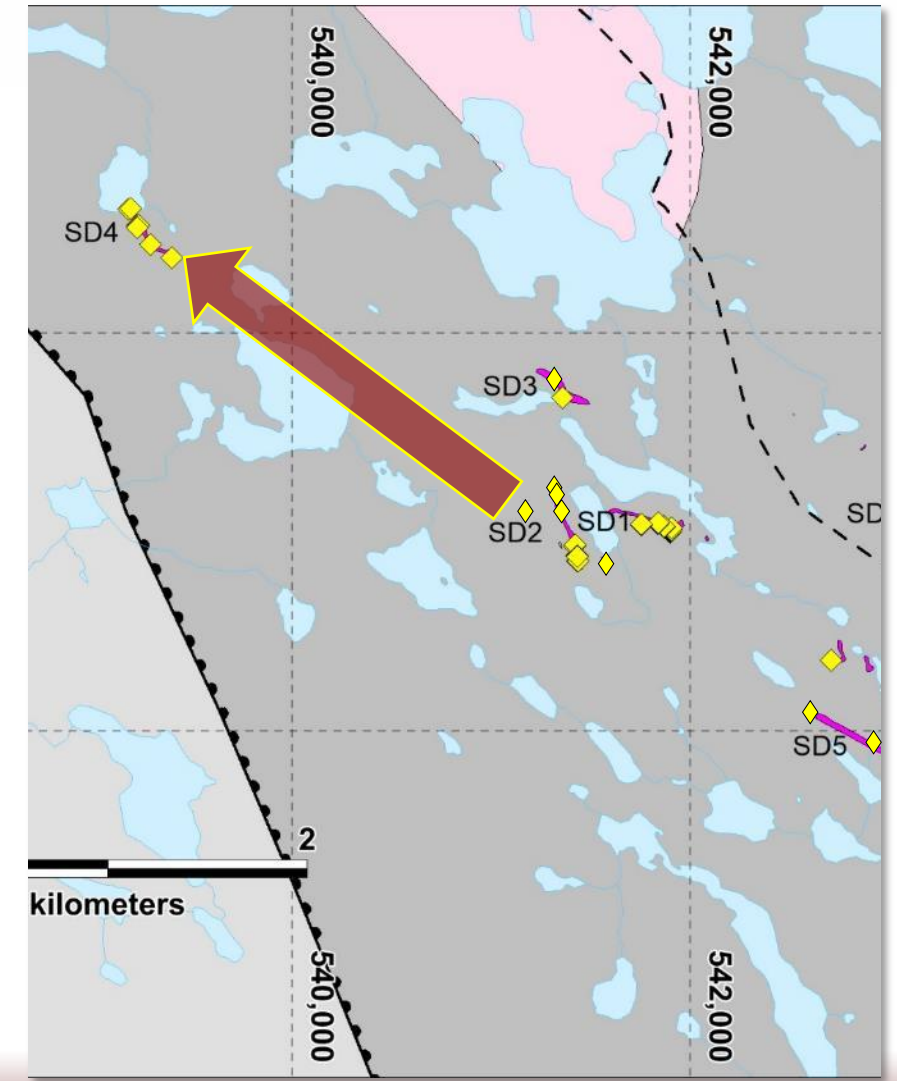


POTENTIAL FOR MORE DISCOVERY BETWEEN SD2 & SD4

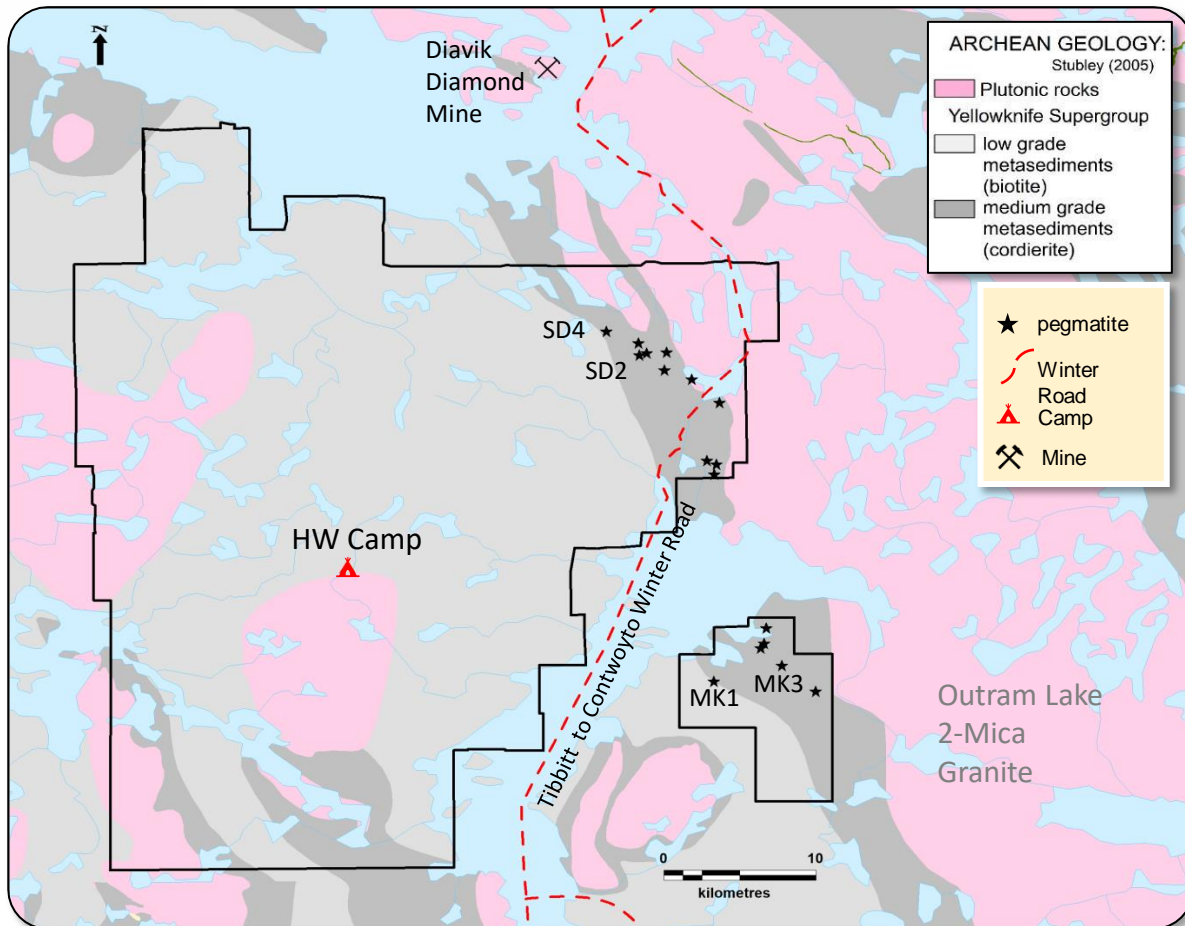
◆ 2023 field sample



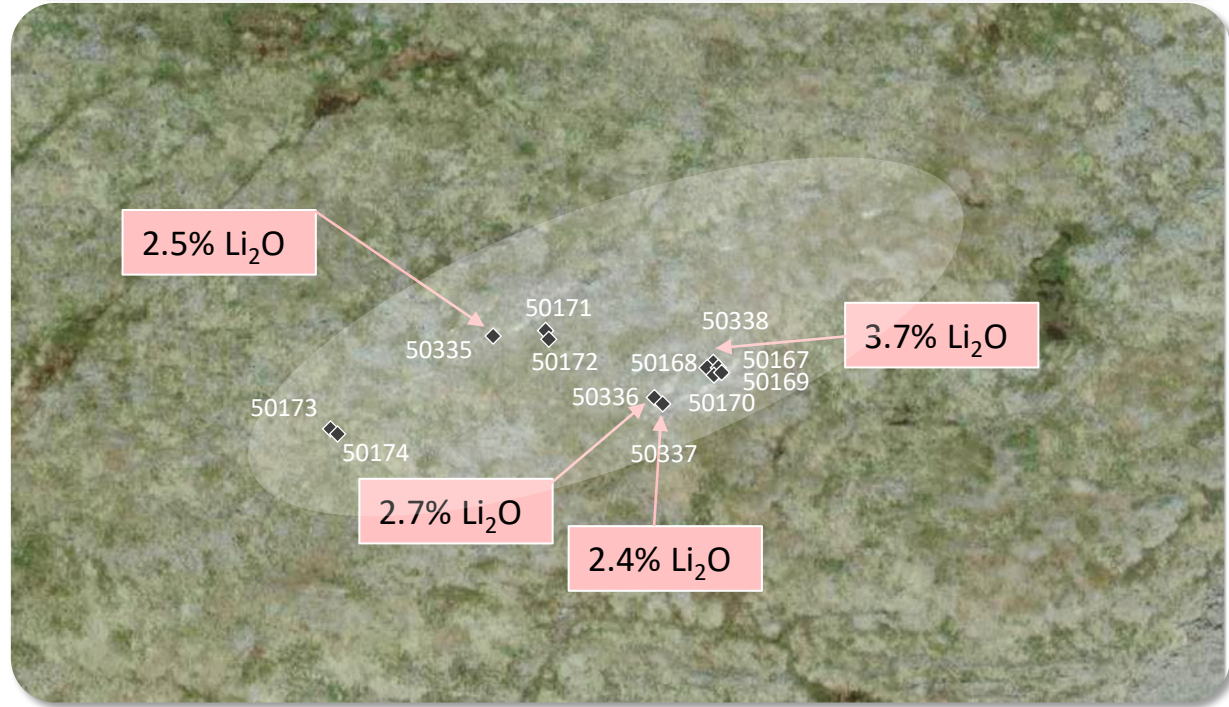
Extensive overburden = potential for discovery of additional, buried spodumene pegmatites between SD2 and SD4.



MACKAY LITHIUM PROJECT – NAR 100%



MK1: Sub-parallel pegmatite dykes from 0.5 to >10m wide; target area has total width of ~150m, interpreted strike of >400m, and is a slight topographic high.





MACKAY LITHIUM PROJECT – MK1

Legend

grab sample result

channel sample result

◆ Fall 2023 sample

◆ Summer 2023 sample

— Channel orientation



2023 MK1 SAMPLE RESULTS

0.34% Li₂O

2.51% Li₂O

1.62% Li₂O / 2m
18% Spodumene

3.21% Li₂O

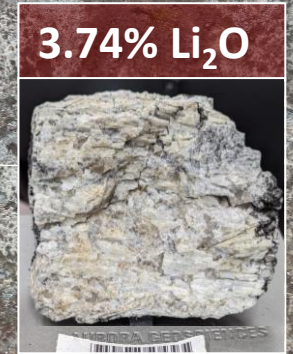
2.62% Li₂O

3.74% Li₂O

2.76% Li₂O

2.45% Li₂O

1.82% Li₂O / 4m
20% Spodumene





MACKAY LITHIUM PROJECT – MK3

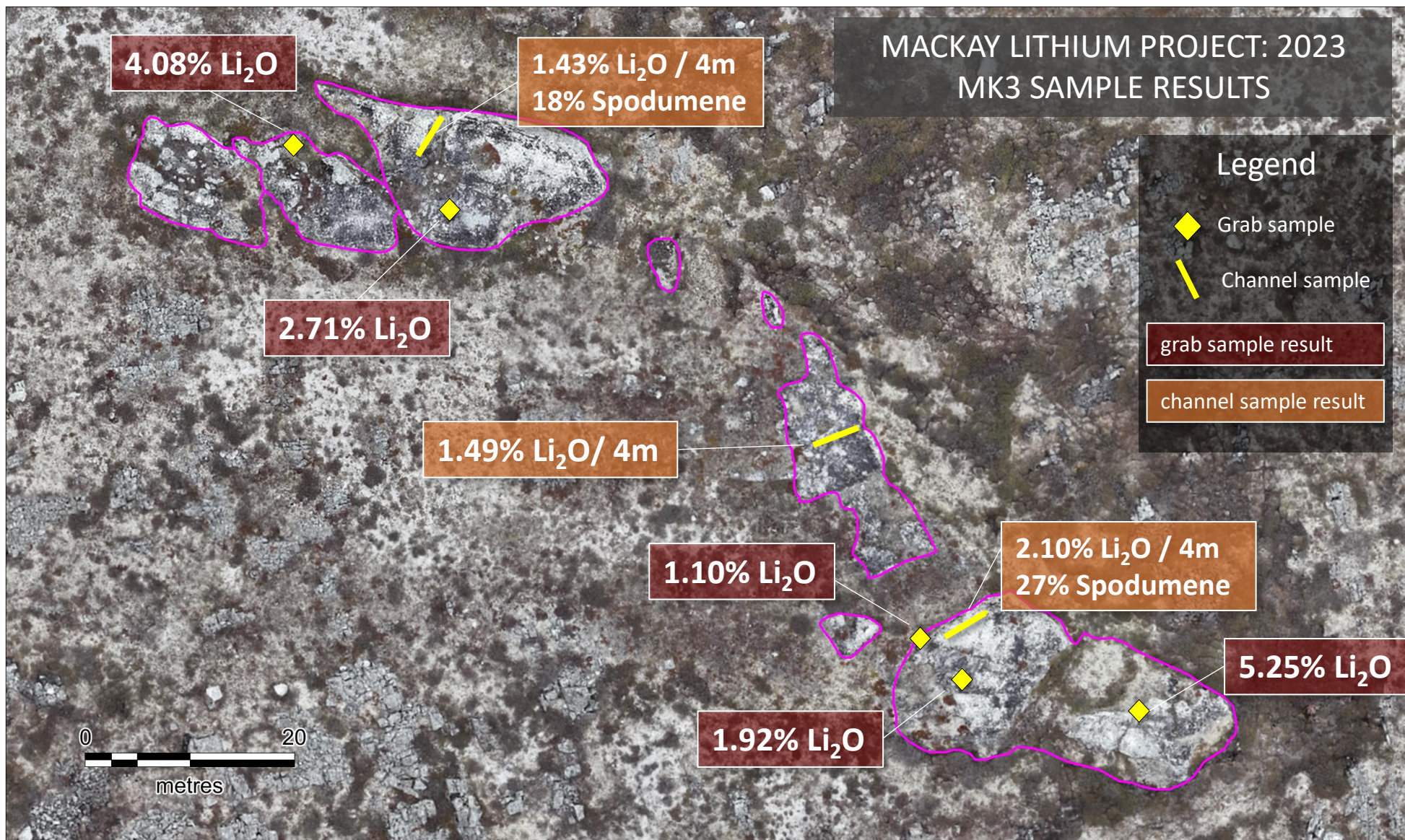


- 4.5 km east of MK1, 15-20m wide, ~130m long
- 2-30 cm spodumene crystals are present throughout the exposure.
- Remains open to the west where it extends beneath extensive overburden.
- Consistent lithium assays including 2.1% Li_2O over 4 metres (27% Spodumene from XRD).



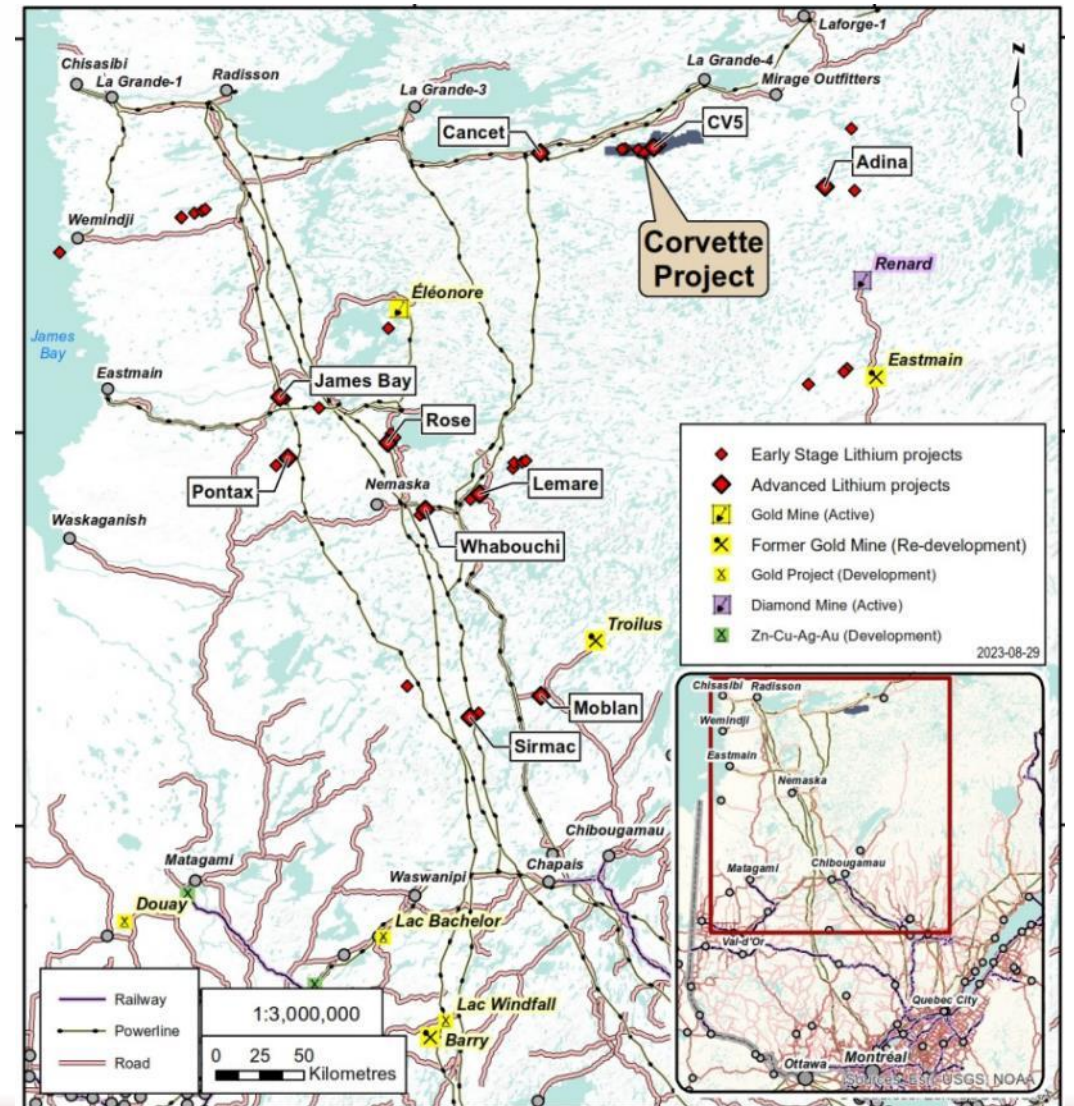
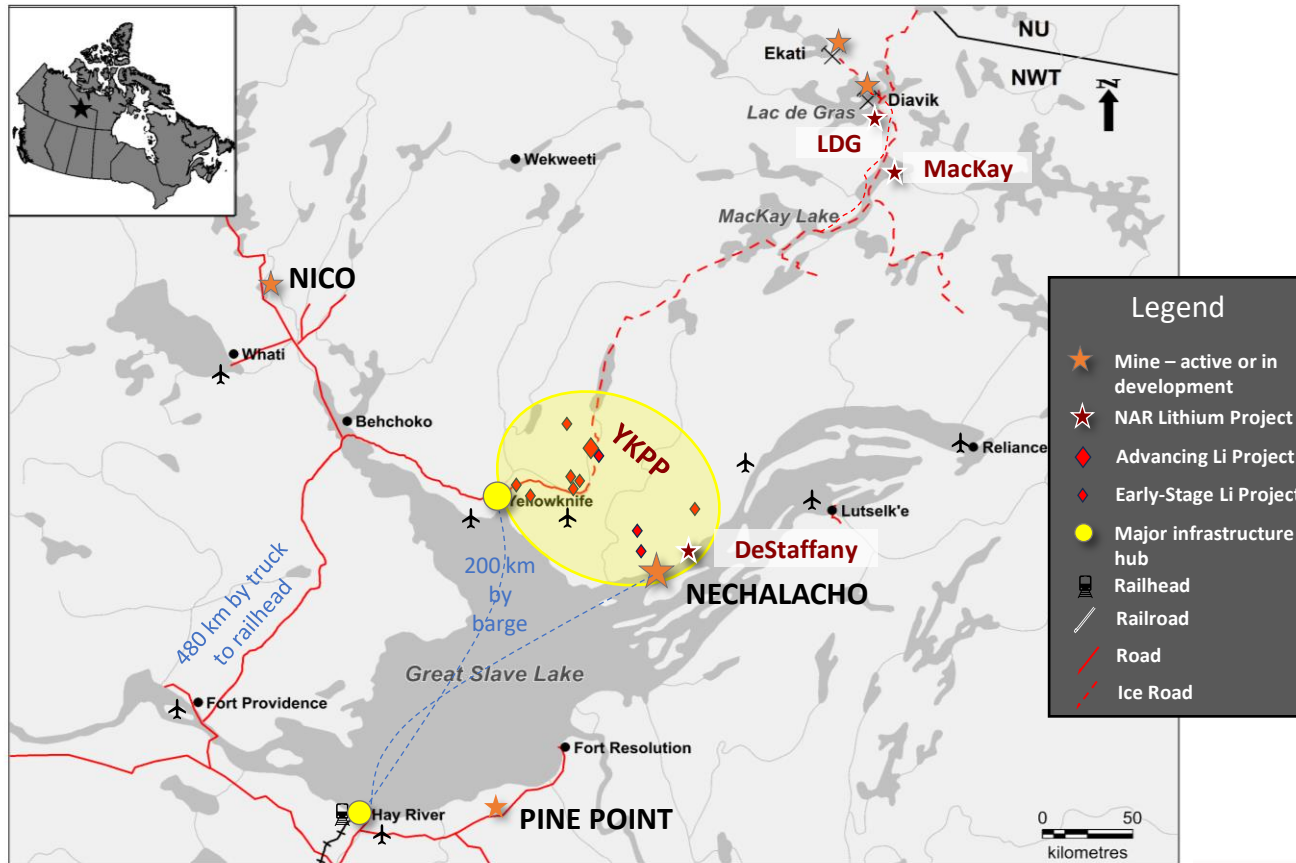


MACKAY: SEPT 2023 MK3 SAMPLE LOCATIONS



NWT TOO REMOTE? COMPARE TO JAMES BAY

- Look at the NWT and Quebec James Bay - **same scale**.
- Proximity to the City of Yellowknife and full airport.
- Proximity to railhead from Hay River



Map from Patriot Battery Metals NI 43-101 Technical Report Effective June 25, 2023



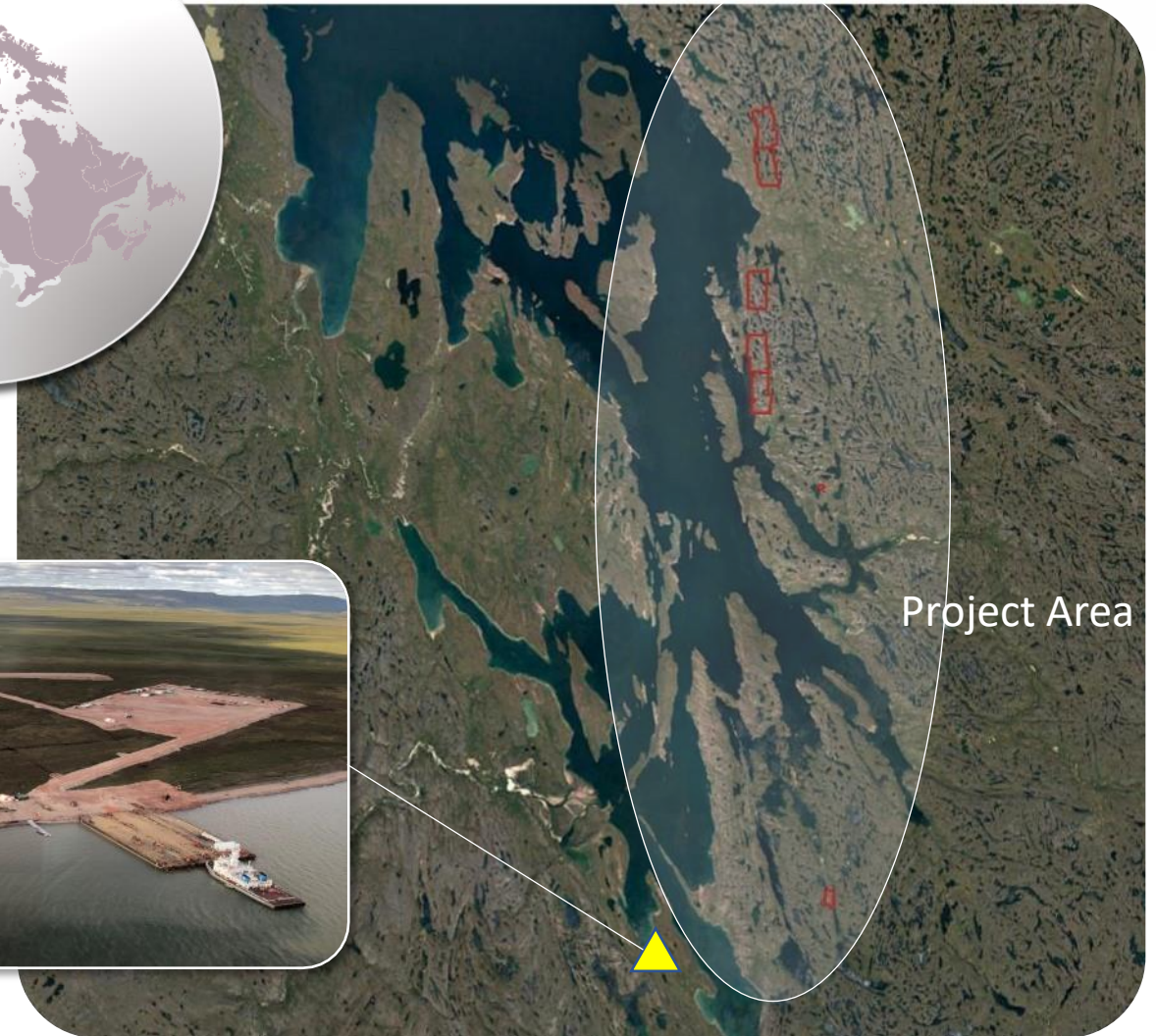
BATHURST INLET LITHIUM PROPERTY, NU

North Arrow MINERALS INC.

- Part of strategic alliance with Panarc to identify and acquire lithium pegmatite opportunities in the NWT and NU.
- Pegmatites mapped by government in the Bathurst Inlet area – some near fertile 2-mica granites.
- Yet to be assessed for spodumene and related lithium mineralization.
- The southernmost mineral claim lies within 12 km of B2 Gold's port facility (formerly Sabina Gold and Silver).



B2 Gold
port facility

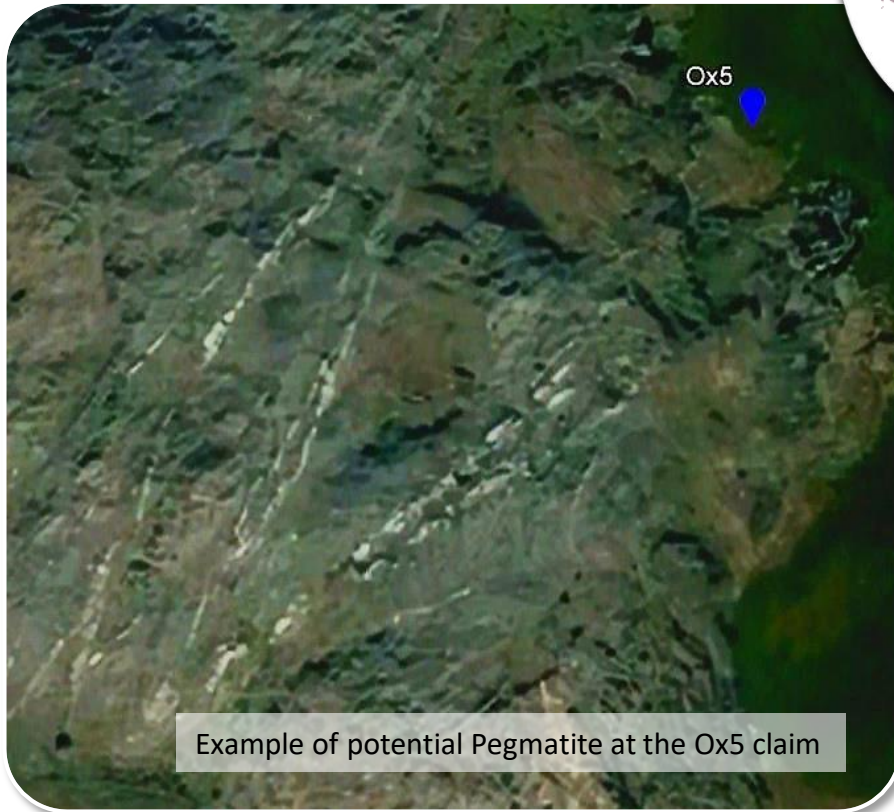


Project Area



BATHURST INLET LITHIUM PROPERTY, NU

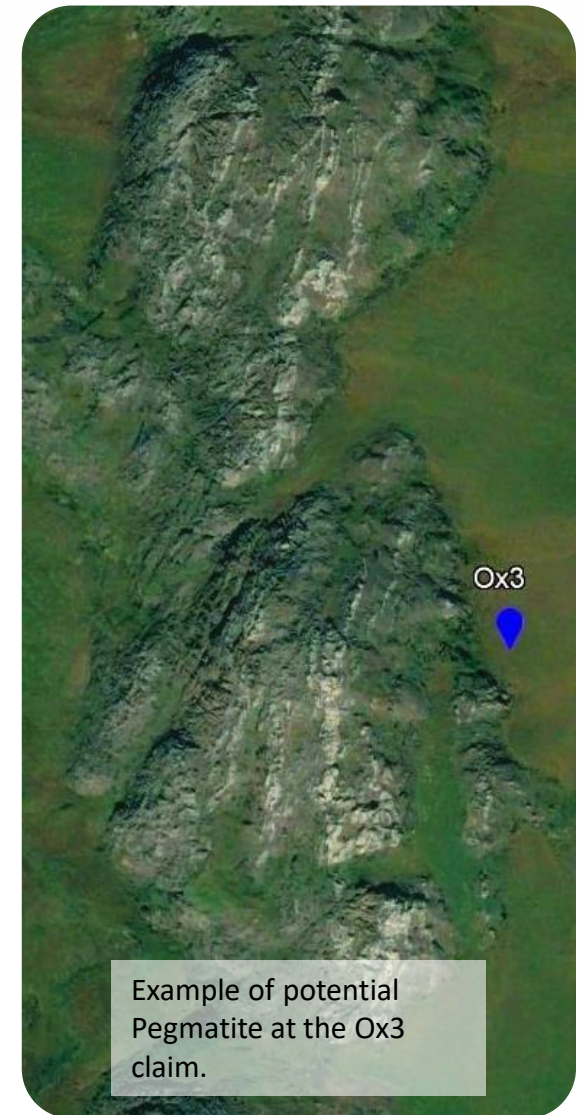
North Arrow
MINERALS INC.



Example of potential Pegmatite at the Ox5 claim



Example of potential Pegmatite at the Bathurst Inlet Claims



Example of potential Pegmatite at the Ox3 claim.



HOPE BAY ORO PROPERTY, NU

North Arrow

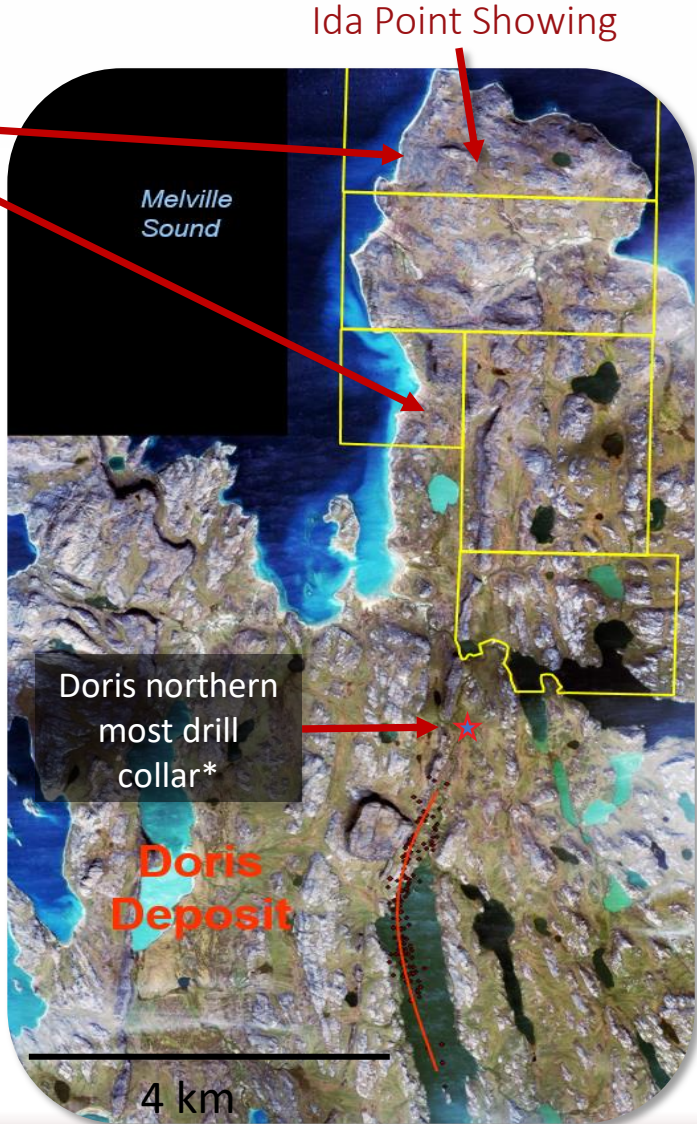
MINERALS INC.

Hope Bay ORO Property

ORO vs Doris:

- ✓ Same rocks
- ✓ Same structural setting
- ✓ Same mineralization style

- Located ~3km north of Agnico Eagle's Doris Gold Mine.
- Host stratigraphy to the Doris deposit extends north onto ORO property.
- Multiple showings including **Ida Point** **5.48 g/t over 5.96 m;** **8.0 g/t over 4.2m.**





YKPP - ACQUISITION COSTS & MARKET CAPS

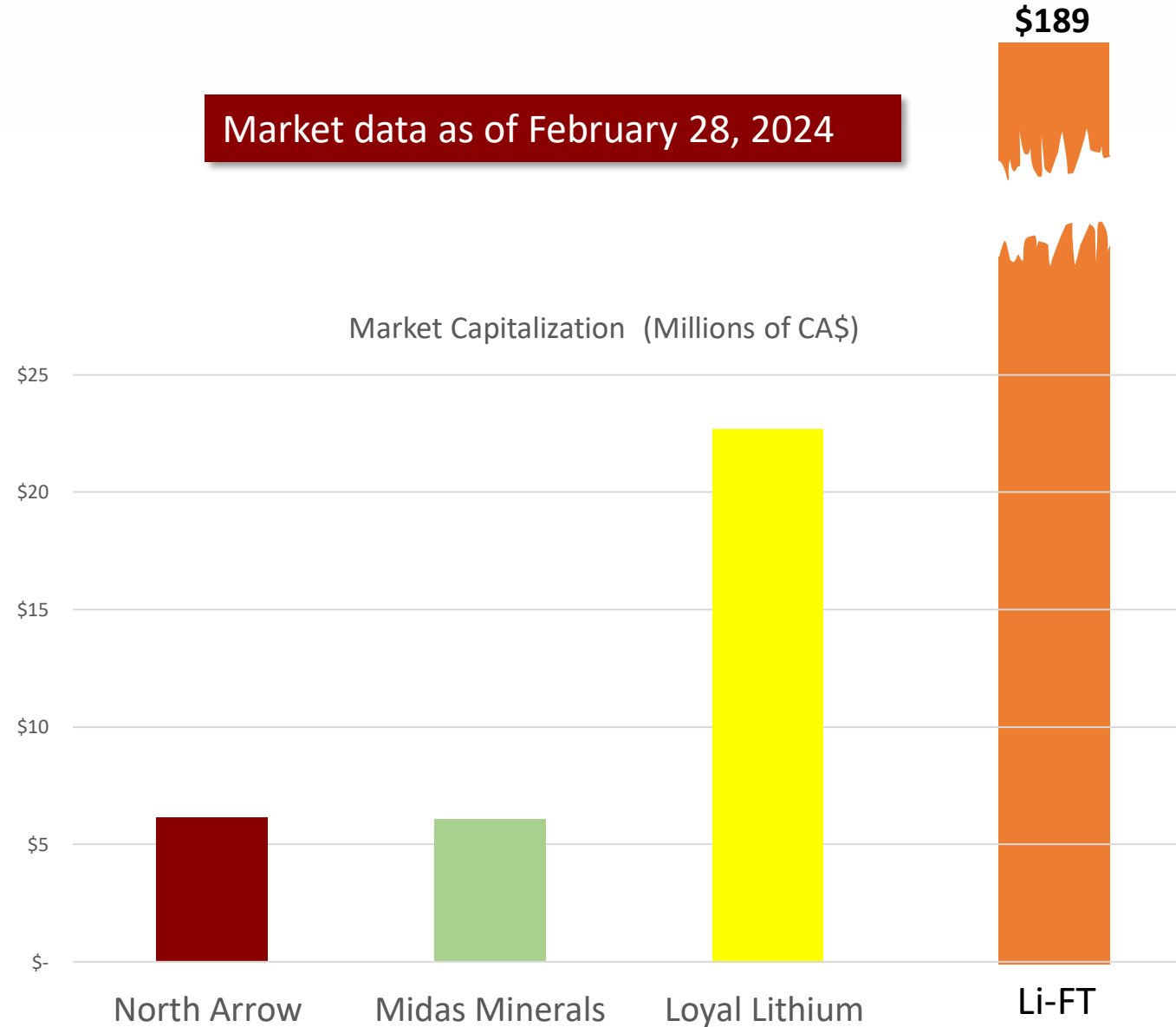
North Arrow
MINERALS INC.

Market data as of February 28, 2024

Companies Exploring the
Yellowknife Pegmatite
Province

Company	Interest Earned	Acquisition Cost
Li-FT	100%	\$142,920,000
Loyal Lithium	60%	\$4,575,000
Midas Minerals	80%	\$11,500,000 ¹
North Arrow	100%	\$60,000 ²

Market Capitalization (Millions \$ Cdn)



¹Includes \$10M in exploration expenditures

²Three Spodumene pegmatite projects



North Arrow

MINERALS INC.

Investing in...

- ❖ A highly experienced management and geological team with a long history of **mine-finding experience** in Canada's north
- ❖ Three permitted and drill ready, spodumene-bearing pegmatite properties near infrastructure in the NWT
- ❖ Legacy gold and diamond projects with value upside
- ❖ A company positioned for both strong market demand for lithium and a re-bounce in interest in rough diamond market

TSXV: NAR	As of January 15, 2023
Share Price	\$0.04
Market Cap	\$7 M
Issued	176 M
Options	13 M
Warrants	64 M
Fully Diluted	252 M
Insiders/Advisers	~27%



North Arrow
MINERALS INC.

Ken Armstrong
President & CEO

Nick Thomas
*Community and Investor
Relations Manager*

TSXV: NAR

Suite 960-789 West Pender Street
Vancouver, BC
Canada V6C 1H2
Tel: +1.604.668.8354
info@northarrowminerals.com
www.northarrowminerals.com