



**NORTH ARROW**  
MINERALS INC

**Kraaipan Project**  
A Botswana Greenstone  
Belt Exploration Opportunity

February 26 to March 5, 2025





## FORWARD-LOOKING INFORMATION

This presentation contains projections and forward-looking information that involve various risks and uncertainties, including, without limitation, statements regarding the potential extent of mineralization, resources, reserves, exploration results and plans and objectives of North Arrow Minerals Inc. These risks and uncertainties include, but are not restricted to, the amount of geological data available, the uncertain reliability of drilling results and geophysical and geological data and the interpretation thereof and the need for adequate financing for future exploration and development efforts. There can be no assurance that such statements will prove to be accurate. Actual results and future events could differ materially from those anticipated in such statements. These and all subsequent written and oral forward-looking statements are based on the estimates and opinions of management on the dates they are made and are expressly qualified in their entirety by this notice. The Company assumes no obligation to update forward looking statements should circumstances or management's estimates or opinions change.

### QUALIFIED PERSON UNDER NI 43-101

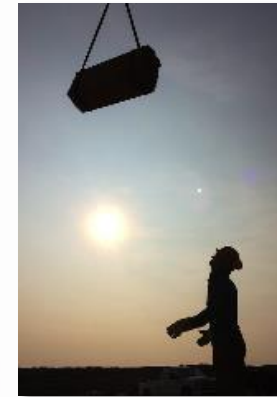
Disclosure of a scientific or technical nature related to North Arrow's projects in this presentation has been reviewed and approved by Ken Armstrong, P.Geo. President and CEO of North Arrow and a Qualified Person under NI 43-101.



**NORTH ARROW**  
MINERALS INC

WHO WE ARE

North Arrow is a Canadian company focused on the identification and evaluation of exploration opportunities.



NAR : TSXV

North Arrow's management and directors have a successful track record of resource discovery and development in Canada and Africa.







### WEALTH OF EXPERIENCE

**Ken Armstrong** (President, CEO, Director, P.Geo.) 25+ years exploration & evaluation experience w/ Diavik, Aber, and others. Past President NWT & Nunavut Chamber of Mines. Director Cornish Metals.

**Eira M. Thomas** (Chair) Extensive exploration and development experience in Canada and Botswana; Former officer &/or director Lucara, Suncor, Aber, Kaminak.

**Blair Murdoch** (Director) More than thirty years of experience in senior management of private and public companies.

**Torrie Chartier** (Director) 25+ years of experience in northern mineral exploration and aviation industries.

**Allison Rippin Armstrong** (Advisor) 20+ years Canadian, African and other international CSR & ESG experience.





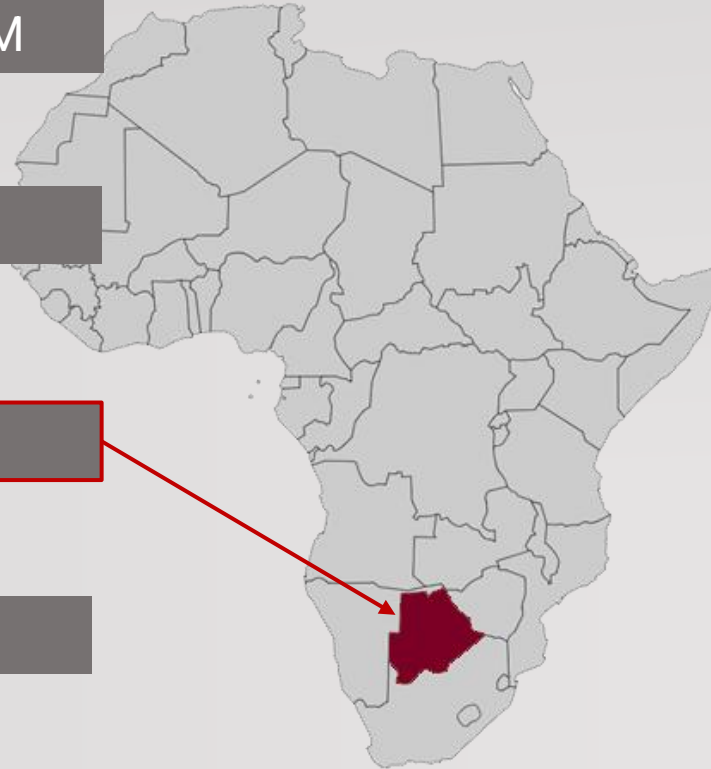
Option to earn up to an 80% interest in  
Kraaipan Greenstone Belt Property, southern Botswana  
**GOLD & BASE METAL OPPORTUNITY**

WORLD-CLASS EXPLORATION TEAM

with a DISCOVERY TRACK RECORD

BOTSWANA FOCUS

BELT-SCALE OPPORTUNITY



**Greenstone Belt with  
Blue Sky Potential**

- Project generated by specialists in sub-Saharan exploration
- Deploying cutting-edge proprietary technologies to rapidly advance projects in this under-explored region
- Located in Africa's premier miner-friendly / investment jurisdiction
- **>60km of the highly prospective Kraaipan Greenstone Belt under licence** located on trend ~40km north of Harmony Gold's Kalgold multi-million ounce open-pit gold mine



## The 2022 Fraser Institute Rankings for **Botswana**

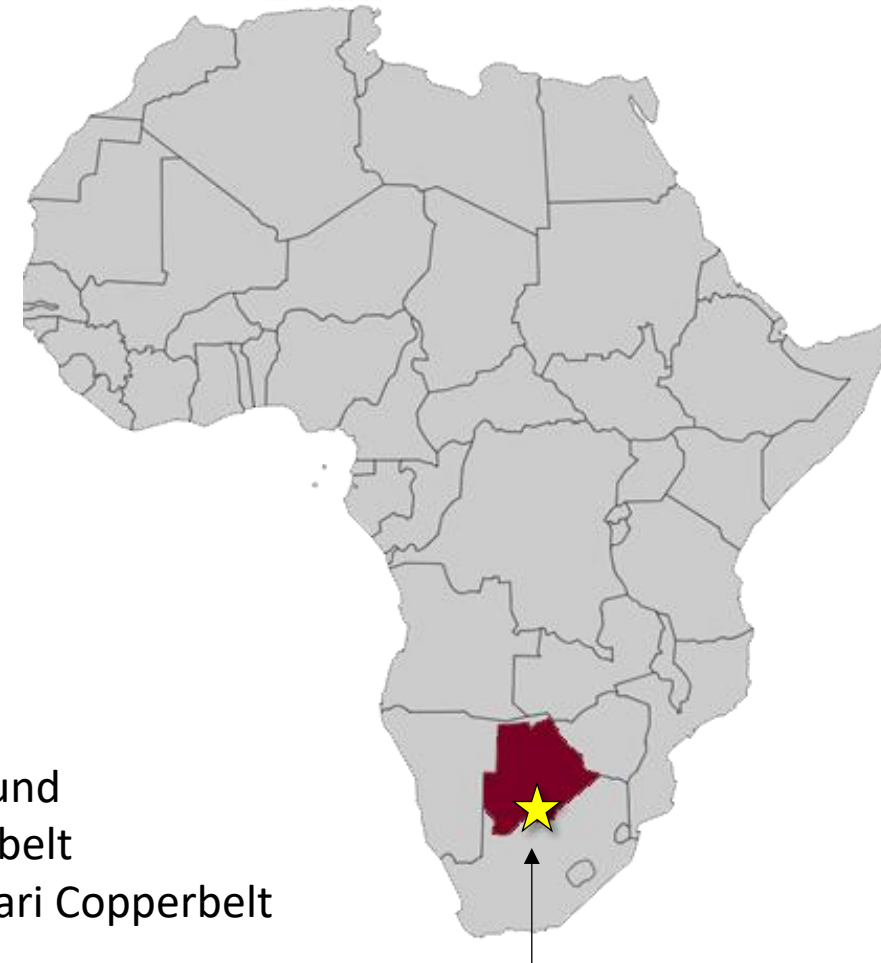
**2022 Global Policy Perception Index - Botswana ranked 2<sup>nd</sup>**  
**2022 Investment Attractiveness Index - Botswana ranked 10<sup>th</sup>**

Attractive jurisdiction for investment

A long history of attracting and partnering with mid-tier and major mining companies to support and develop large mining projects

### ***Recent development projects include:***

1. **Lucara Diamonds:** mine expansion from open pit operations to underground
2. **MMG:** Khoemacau Cu-Ag mining development along the Kalahari Copperbelt
3. **Sandfire Resources:** Motheo Cu-Ag mining development along the Kalahari Copperbelt



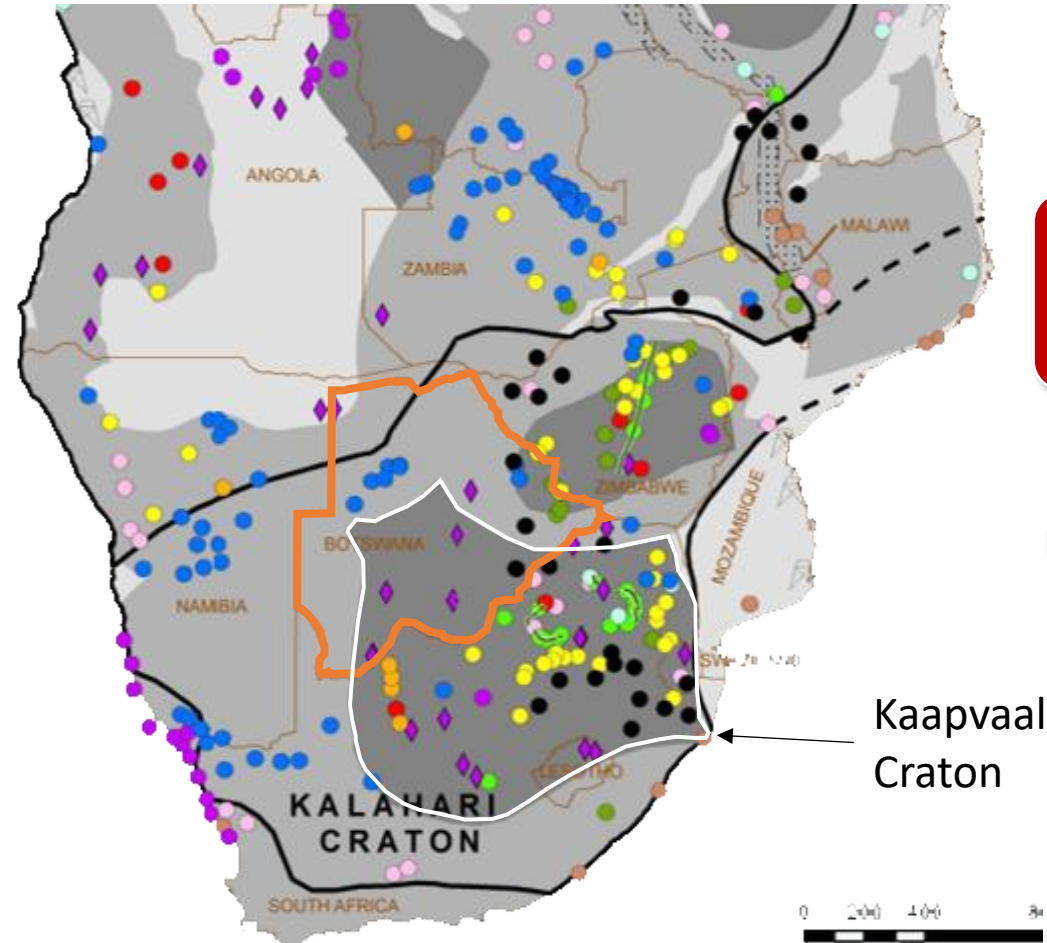
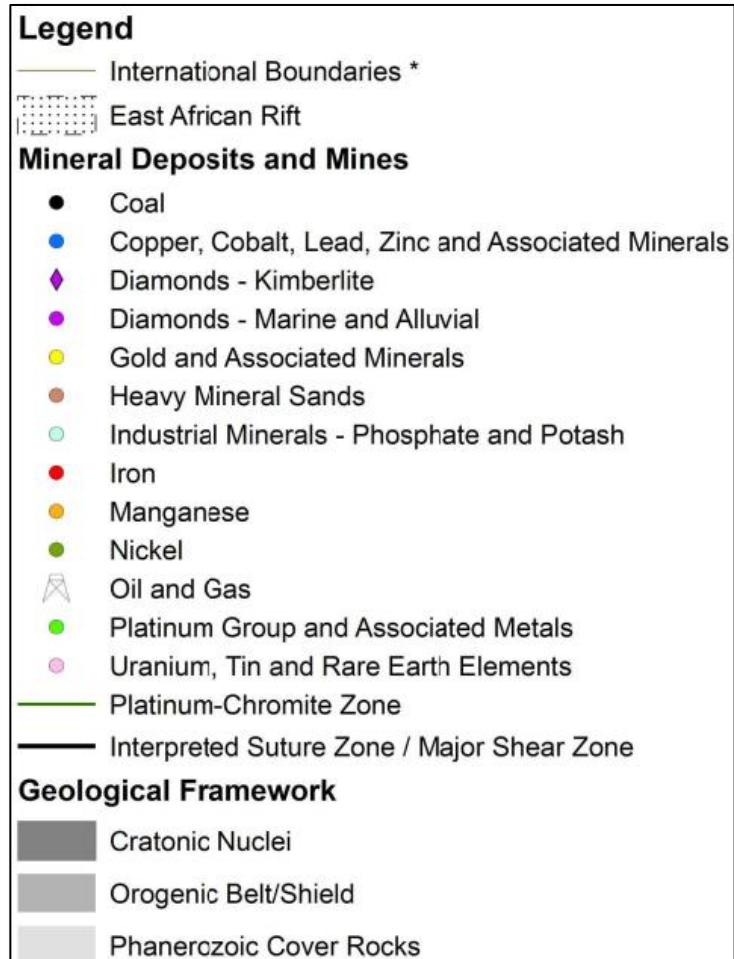
THE KRAAIPAN GOLD PROJECT



The Kaapvaal craton is a prolific locality for gold, PGE and base metal deposits in South Africa...

...But less so in Botswana

WHY?



Kaapvaal Craton




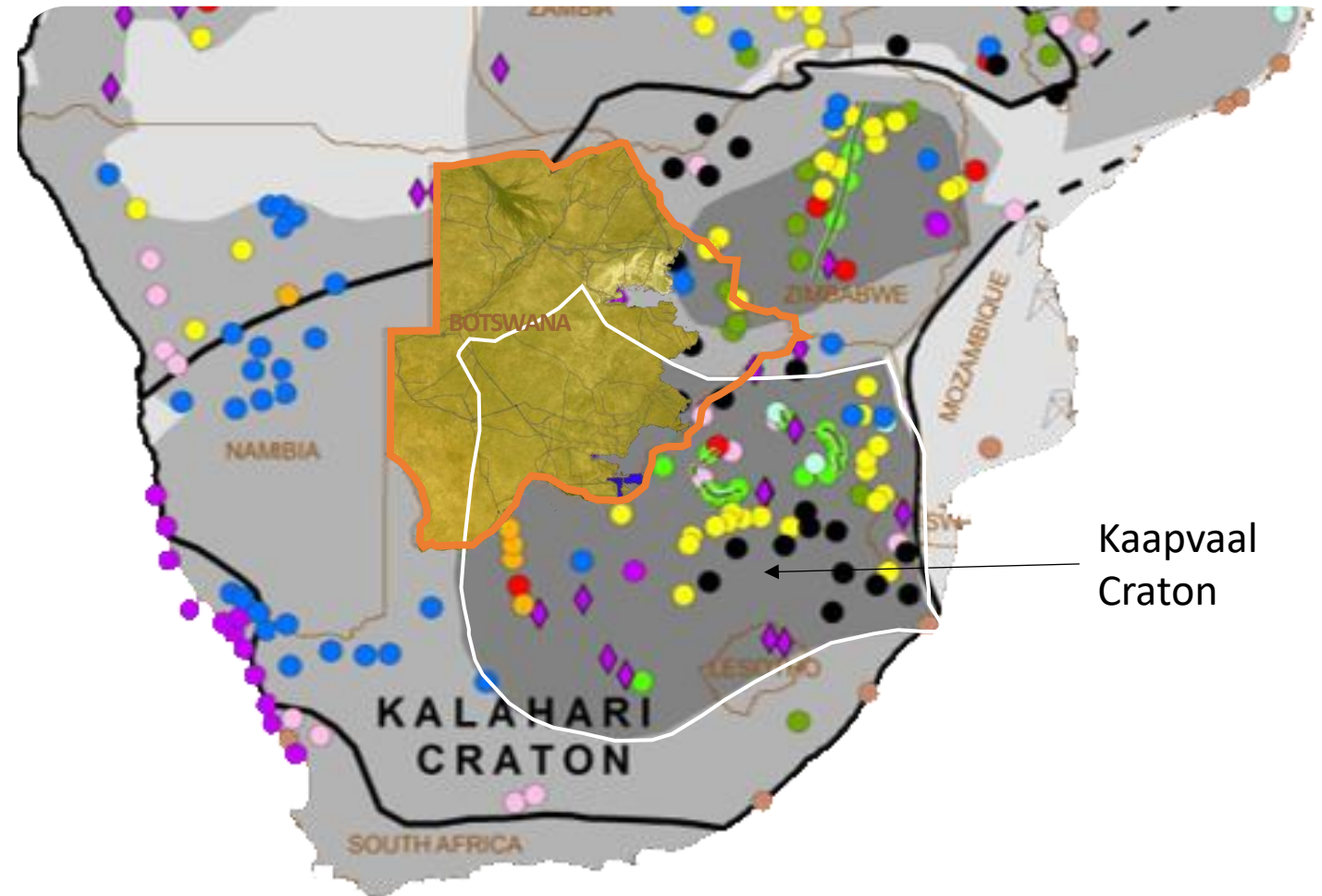


- Kalahari Desert sands cover >70% of Botswana - has hindered exploration of many prospective areas.
- South Africa is twice the size of Botswana but boasts **5 times as many mines**; despite very similar geological potential.

**South Africa has 552 mines  
Botswana has just 116 mines\***

*(\*from Africa Mining IQ Website)*

 Kalahari Sand Cover

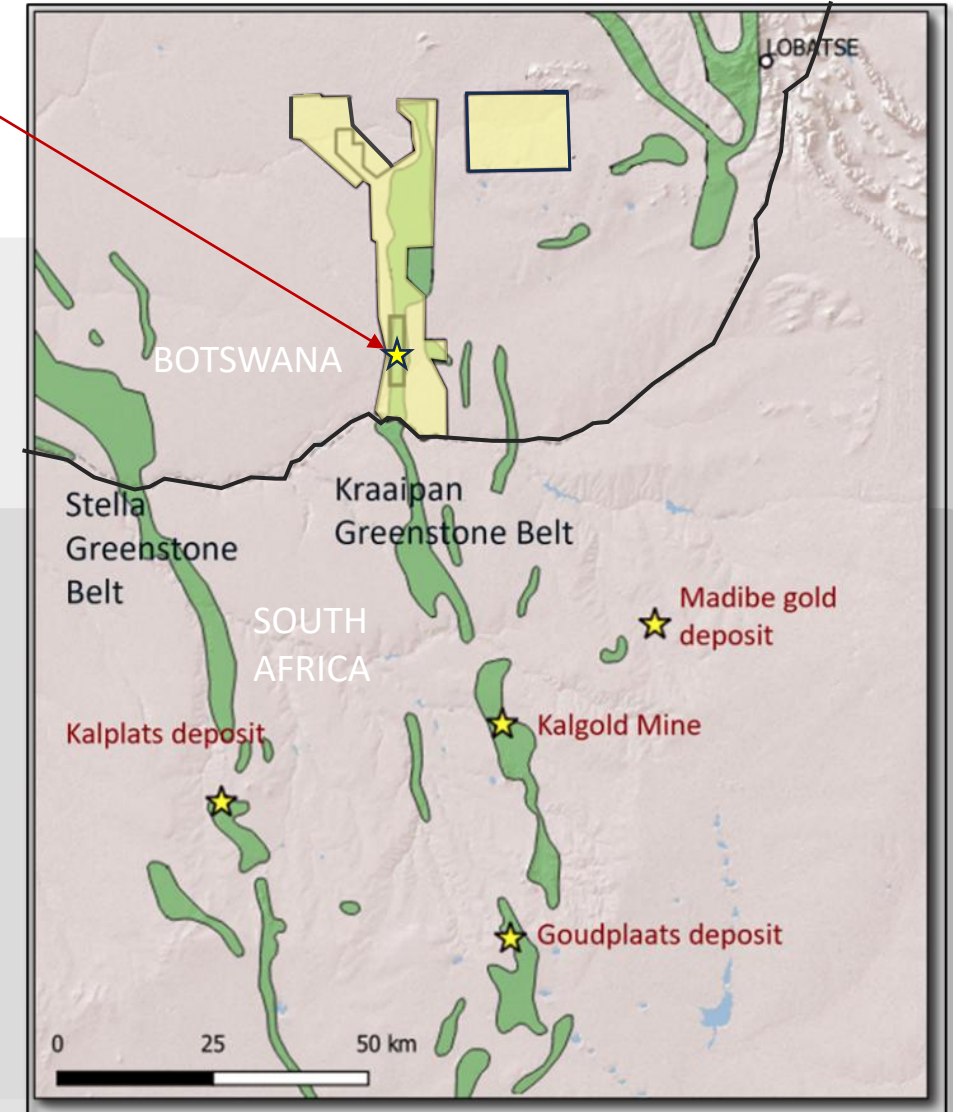


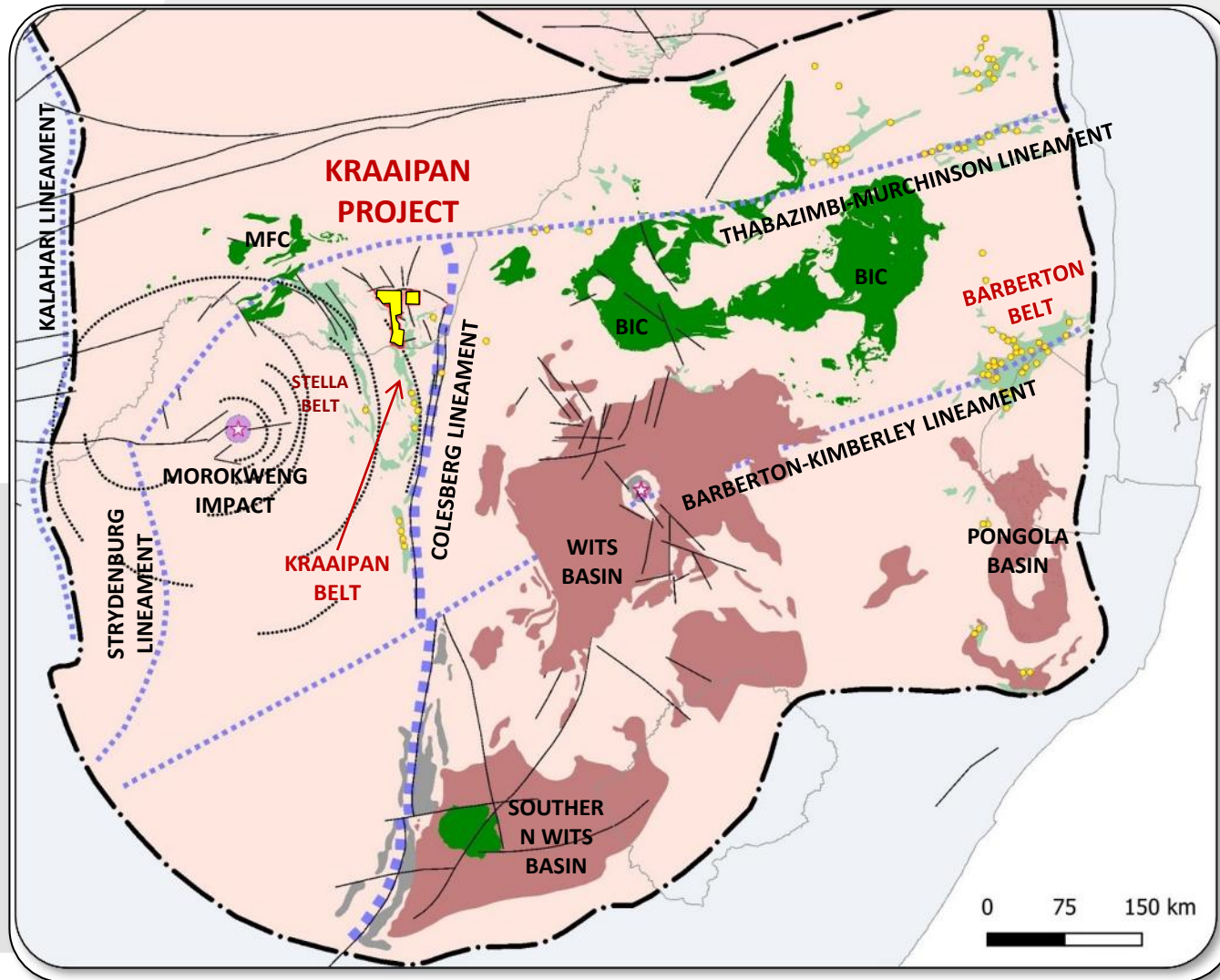




RAB drill results:  
13m @ 1.7 g/t Au  
21m @ 1 g/t Au  
3m @ 5.1 g/t Au

- ~724 km<sup>2</sup> mineral concession in southern Botswana covering **the entire ~60km northern extension of the Kraaipan Greenstone Belt (KGB);**
- On trend from the multi-million-ounce Kalgold Mine, South Africa; other greenstone belt related deposits in the area.
- > 80% of the KGB in Botswana is covered by Kalahari sands - poor exposure = underexplored opportunity!
- A first-pass 3,800m Rotary Air Blast (RAB) drill program in the late-90's confirmed anomalous gold mineralisation over a 10 km strike length of outcropping & interpreted iron formation.





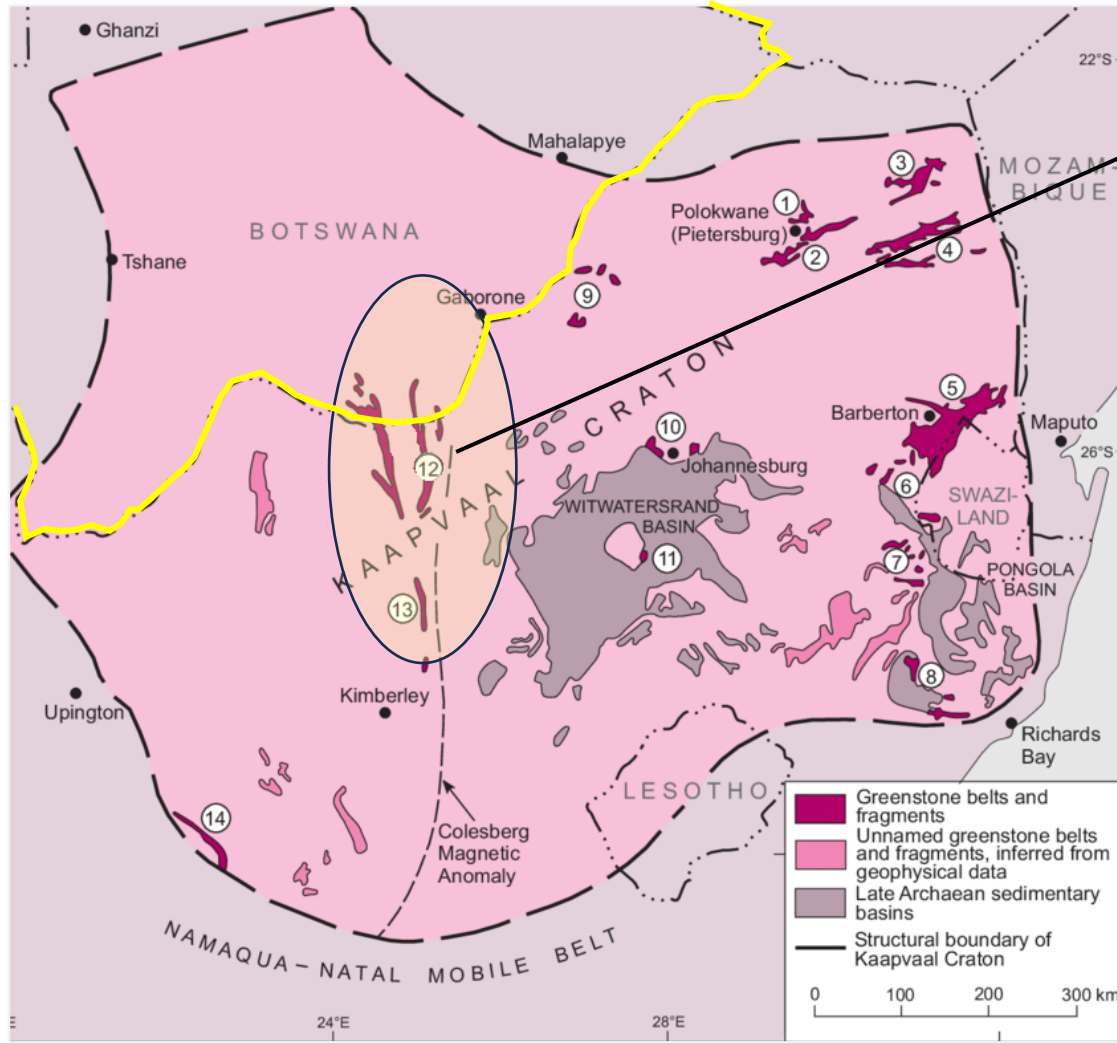
### THE COLESBURG LINEAMENT

- 3.1 to 2.9 Ga crustal-scale suture zone
- Formed when the Kimberley and Witwatersrand Terranes collided - the Colesberg Orogeny
- Proximity of **Kraaipan Project** to the Colesburg Lineament provides a compelling belt-scale exploration opportunity.
- Crustal scale structures are important indicators for Archean gold mineralization.





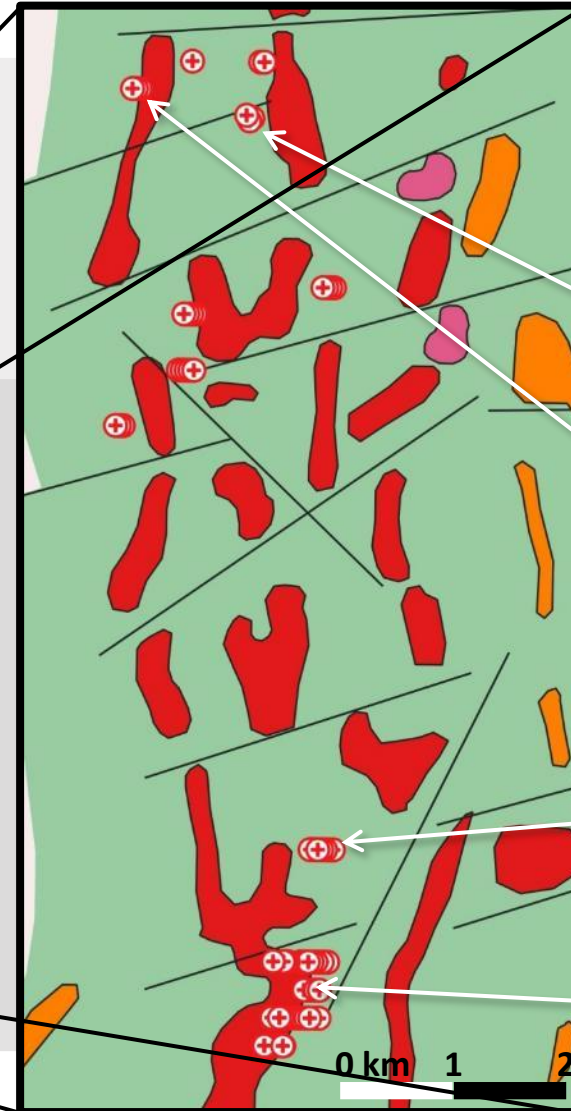
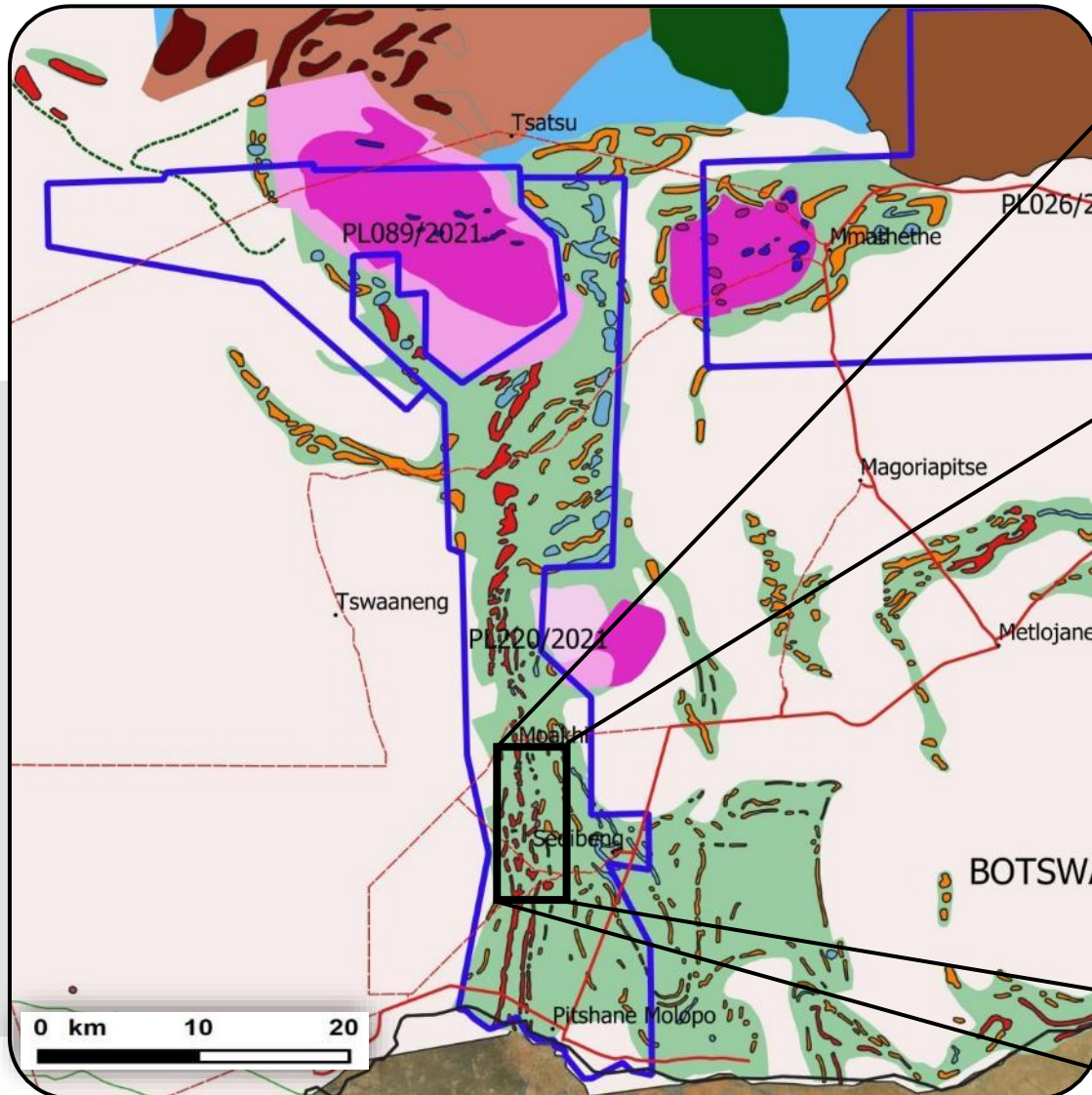
Figure credit: Carl Robert Anhaeusser, Ph.D and D.Sc. University of the Witwatersrand, Johannesburg



12

### KalGold Mine, South Africa Mining the *Kalahari Goldridge* Deposit

- Located 40 km south of the Kraaipan Project licenses, within the same greenstone belt.
- Started mining in 1995 (acquired by Harmony in 1999).
- Multi-million-ounce banded iron formation (BIF)-hosted gold deposit with P&P Reserves ~0.39Moz @0.88g/t; additional M&I Resources ~1.35Moz @1.18g/t. Harmony Gold 2023; Technical Report Summary for Kalgold Mine, SA
- Open-pit operation producing from 75Koz to 45Koz annually.
- Mineralized areas extend beyond MRE limits.



Outcropping BIFs  
1990's: Reunion Mining  
intersected high-interest  
gold mineralisation.

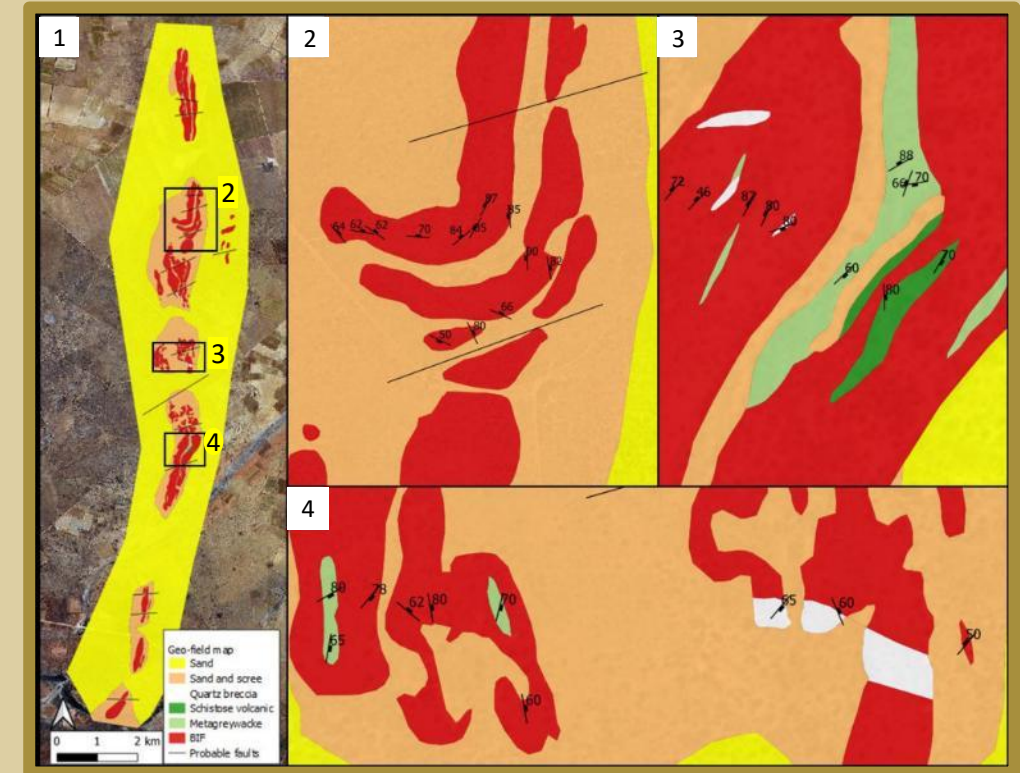
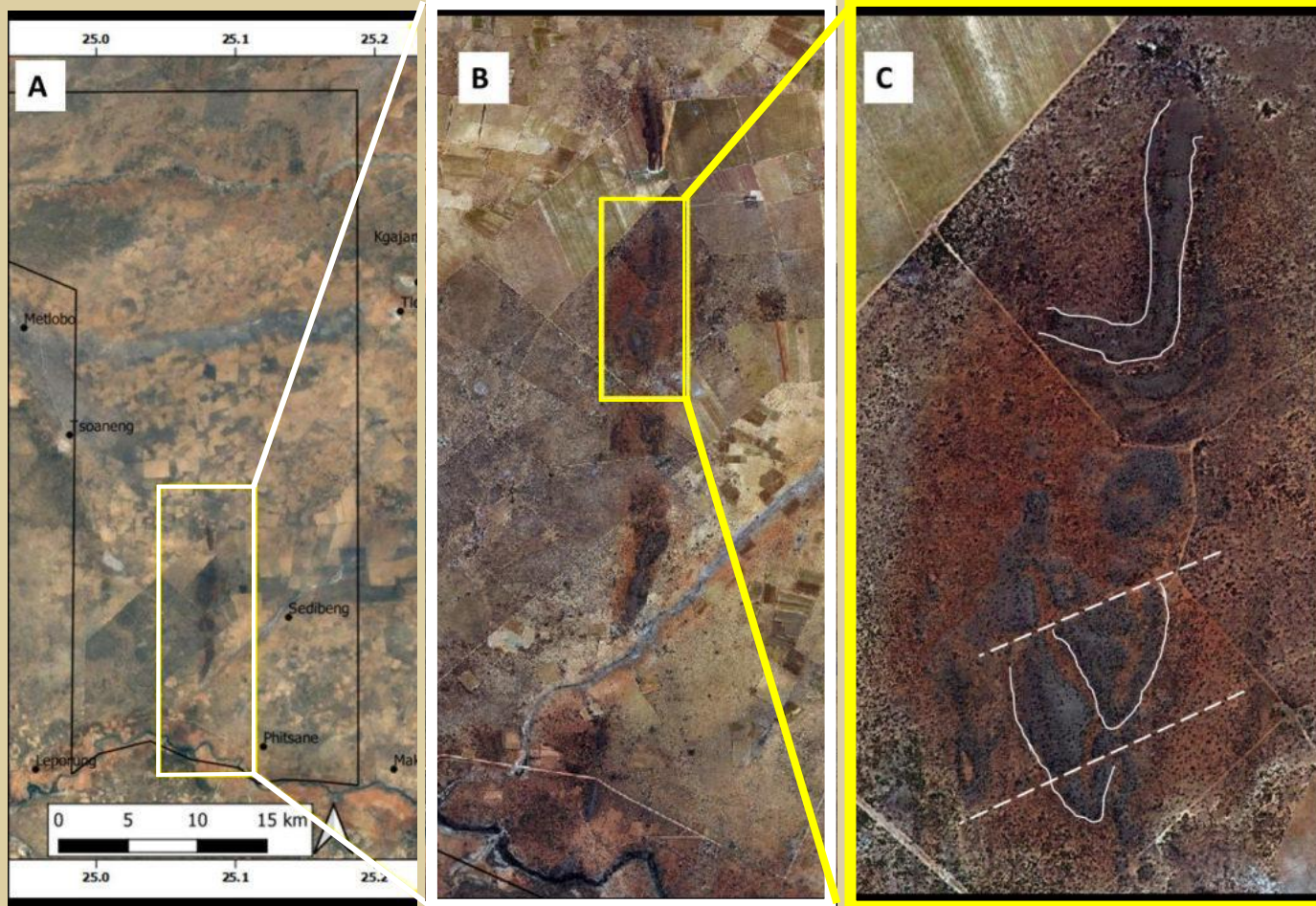
42m @ 0.6g/t  
Au incl. 21m @  
1g/t Au

9m @ 1.6g/t  
Au incl. 4m @  
2.3g/t Au

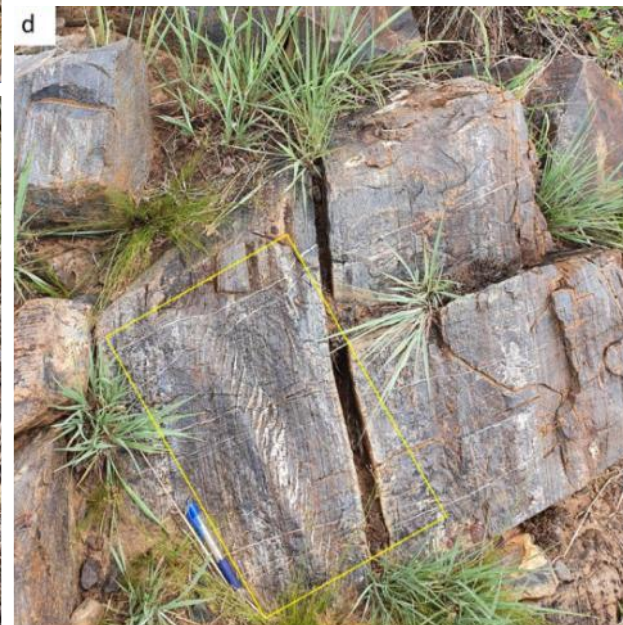
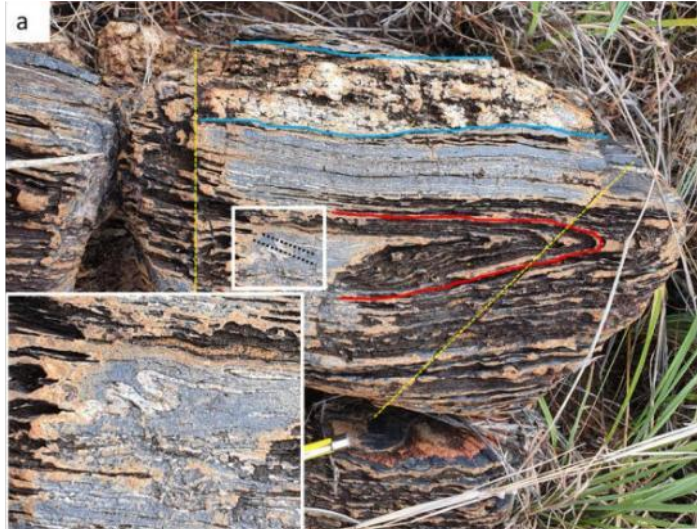
21m @ 1g/t  
Au incl. 5m @  
2.3g/t Au

13m @ 1.7g/t Au  
incl. 3m @ 5.1g/t  
Au













*In-house proprietary technologies to provide a first-time exploratory window into high potential, sand covered areas of Kraaipan Greenstone Belt*

**Remote Mapper UAV** – High resolution geophysical data

**Proprietary Drilling Services** – Truck mounted RC drill, project-wide drivability, all-season working conditions. Focus on collecting geochemical samples at the base of the Kalahari and testing priority structural bedrock targets.

**In-House Sample Processing** – Sample prep of RC samples to happen before shipping to South Africa; less material to ship; quicker turnaround.

**Deep Machine Learning** – proven technology using success as a springboard for more. Once deposit defining criteria are understood DML can be applied (Ekati example).







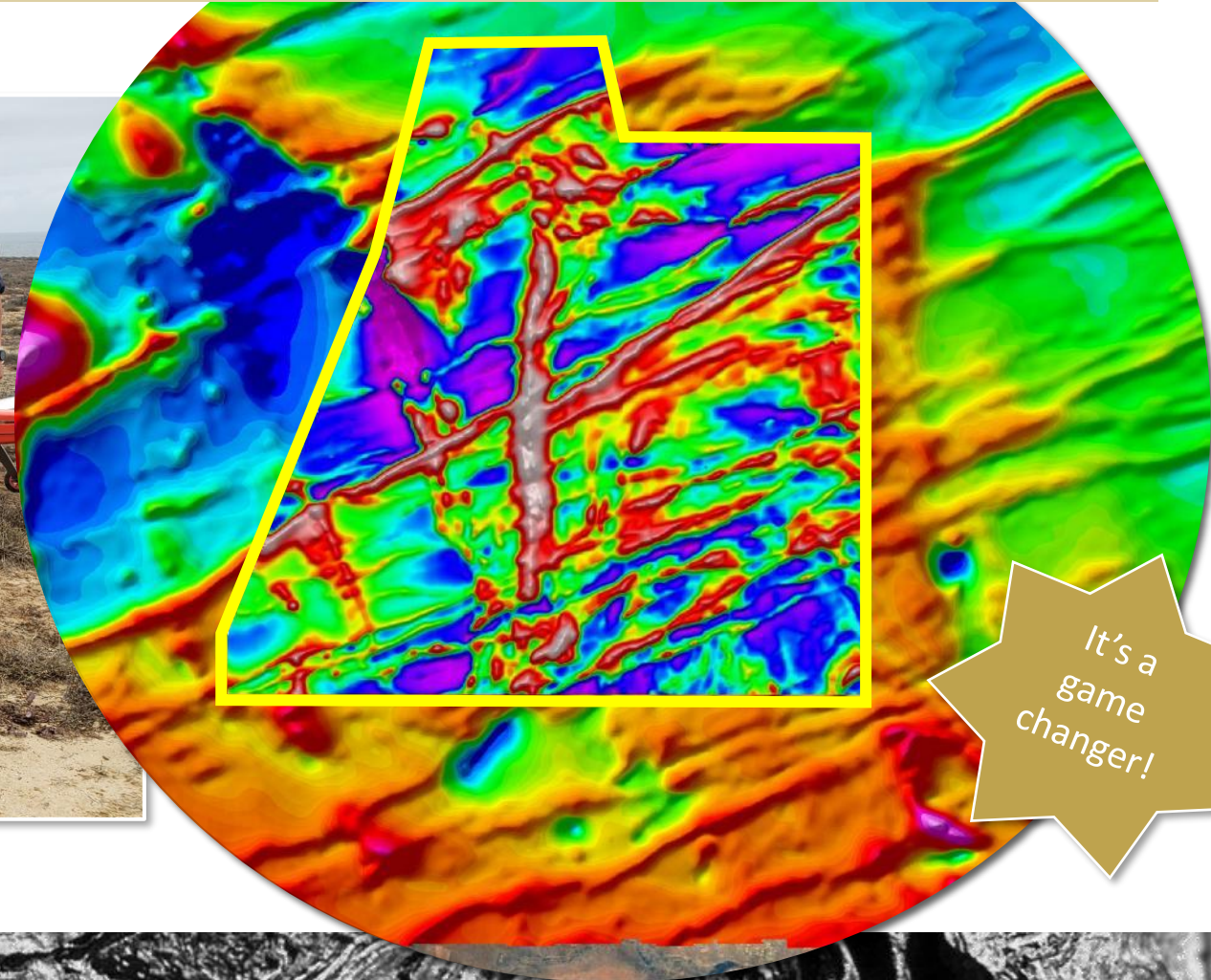
**NORTH ARROW**  
MINERALS INC

## MS GROUP'S REMOTE MAPPER UAV

EFFICIENT, HIGH RESOLUTION UAV MAGNETIC SURVEYS

- Provides mag data at a resolution currently only associated with ground mag surveys.
- **Remote Mapper** can produce 1000 line-km per day of data; ground mag produces ~20 line-km of data per day.

14 years  
in the  
making!



It's a  
game  
changer!







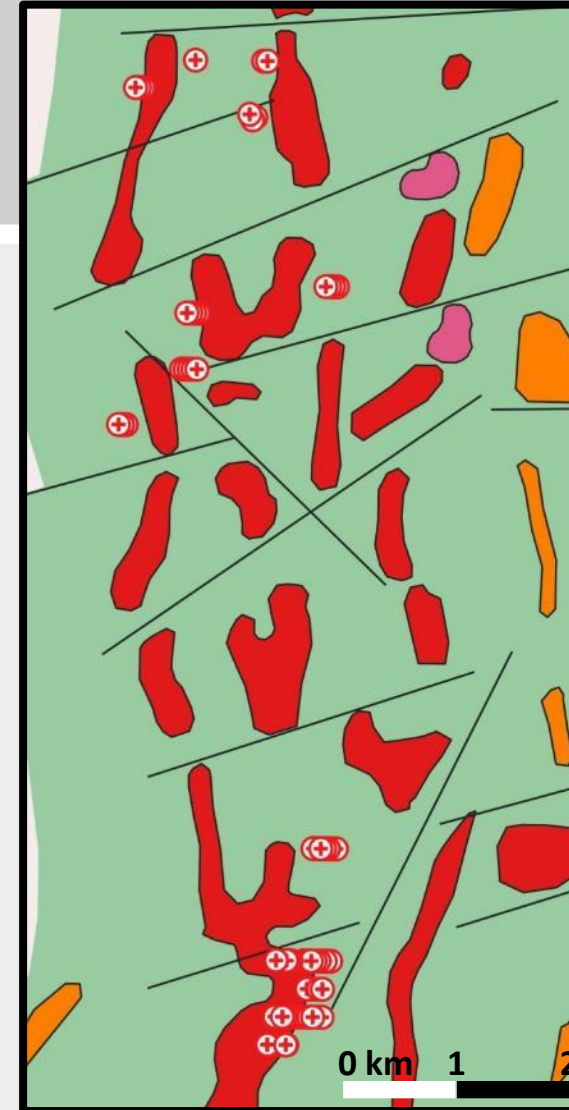
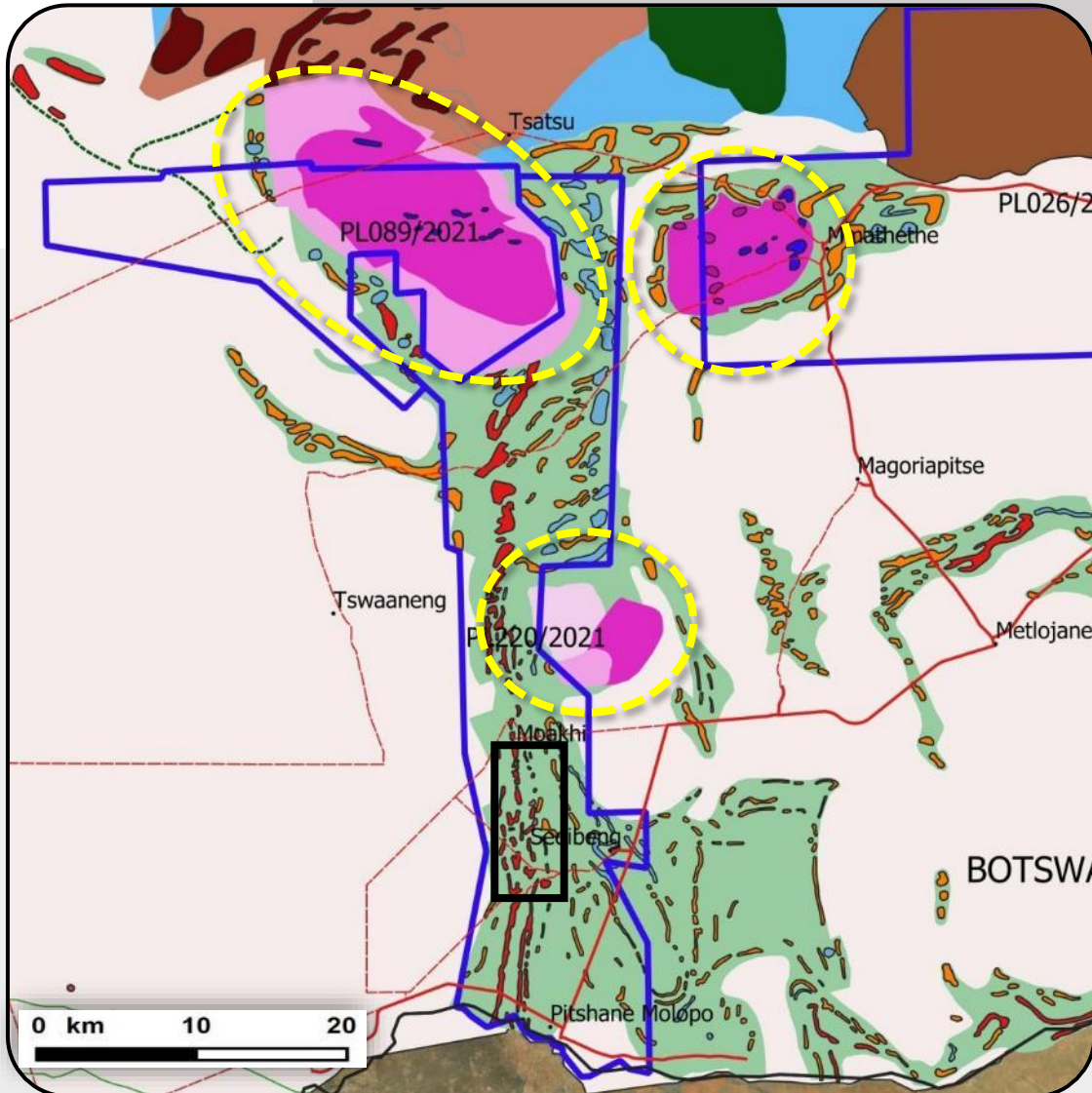
DRILL TRUCK EQUIPMENT & PROCESS  
REFINEMENT CONTINUES



- Mineral Services Botswana is optimizing a scaled down version of the truck mounted drill (on the right); a single truck with compressor will tow trailer with drill.
- A new rod handling system has been developed to allow for less handling and faster set up.
- Once complete, a minimum 3-4 holes per day should be achievable.







### Prospective areas overlooked by past exploration:

- Covered BIFs – untested below Kalahari sands.
- **Major structures** – Key 2<sup>nd</sup> and 3<sup>rd</sup> order structures
- Intrusive bodies – contacts between the KGB and intrusive bodies (yellow circles)
- Ni- Cu-PGE potential in northern area of the project





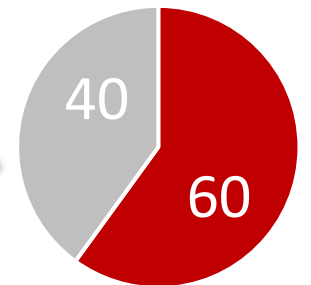
### The 1<sup>st</sup> Option Agreement

North Arrow can earn a 60% interest by incurring US\$5M in exploration expenditures over 3 years:

- i. US\$1M in exploration expenditures by June 30, 2025 (firm commitment);
- ii. An additional US\$2M in expenditures by June 30, 2026
- iii. An additional US\$2M in expenditures by June 30, 2027.

Upon spending the US\$5M NAR will issue 1,000,000 shares to Rockman to vest its 60% interest

First Option –  
NAR 60%



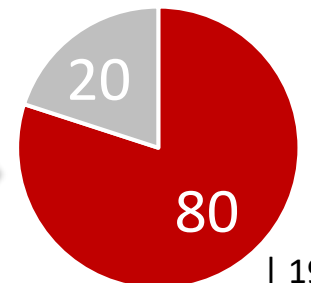
Rockman option to continue as a 40/60 Joint Venture or...  
*Grant NAR the option to earn an additional 20% - the PEA Option*

### The PEA Option

NAR can earn an additional 20% interest by completing a Preliminary Economic Assessment ("PEA") of the project

Upon delivery of the PEA, NAR will issue 2,000,000 in shares to Rockman to vest its additional 20%

PEA Option –  
NAR 80%





### High-resolution magnetic surveys (Ongoing)

- Complete high-resolution (25 m line-spacing) Remote Mapper magnetic surveys of project area
- **>20,000 line km completed over the belt to date**

### Detailed structural mapping, interpretation & target generation (January-March)

- Based on high-resolution magnetic data & field follow-up - detailed structural mapping and interpretation
- Update geological mapping and definition of prospective regions to identify & prioritise targets for drilling & sampling

### Drill test compelling Banded Iron Formation (BIF) & structural gold targets (April-July )

- **Build on RC drill holes completed in 2024 testing bedrock and base of Kalahari sands in a new target area.**
- Focus on areas with <40 m of Kalahari cover
- Test prioritized targets with overburden reverse-circulation drilling (**~150 to 200 drillholes**)
- Sampling the “base of Kalahari” and bedrock for Au & pathfinder elements by multi-element geochemistry

### Additional reverse-circulation and core drilling (H2 2025)

- Target key prospective targets to constrain geology and mineralization
- Program design based on results from overburden drilling and soil sampling





0.31 carat polished rectangular radiant cut



GIA colour  
certified as  
**Fancy Vivid  
Orangy Yellow**

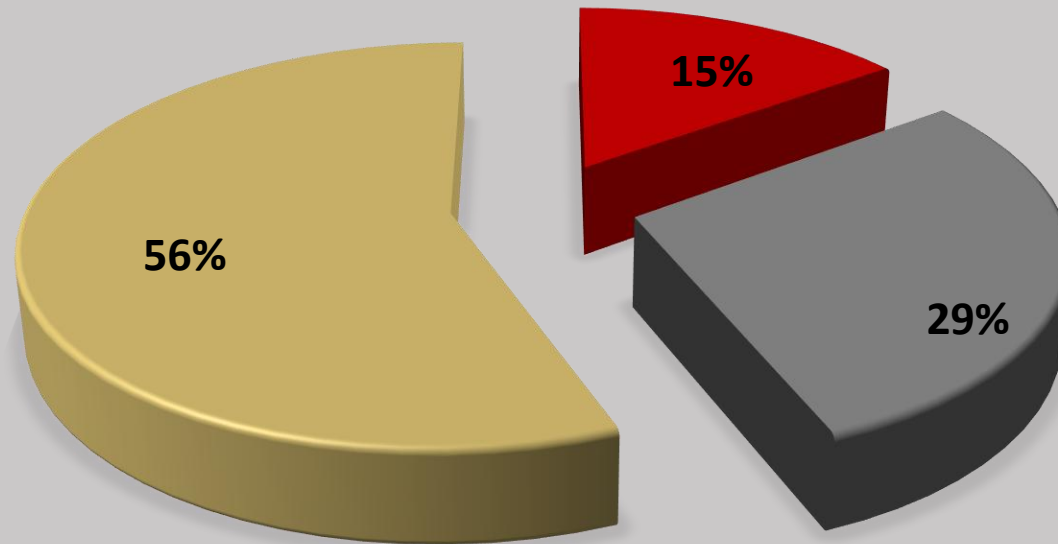
0.57 ct rough



0.21 carat polished rectangular radiant cut

GIA colour  
certified as **Fancy  
Vivid Orange-  
Yellow**

✓	Jurisdiction	Clear permitting path in Nunavut
✓	Near tide water	Freight costs 50% of NWT diamond mines
✓	Large tonnage	~48 Mt down to 205m below surface
✓	Low strip ratio	<3:1 vs >10:1 for NWT diamond mines
✓	Significant diamond inventory*	~26M contained carats
✓	Blue sky potential	Q1-4 at depth; 15 additional kimberlites



■ Management and Directors   ■ Key Shareholders   ■ Float

### POST FINANCING SHARE STRUCTURE

Issued and Outstanding	28,580,224
Options	2,170,000
Warrants	8,867,887*
<b>Fully Diluted</b>	<b>39,618,101</b>

\*3.00 M at ~\$1.00-1.20 expire May 2025.  
Includes ~5.85M at \$0.30 expiring April 2026





- ❖ Highly experienced management and geological team with a long history of **mine-finding experience** in Canada and Africa
- ❖ **Kraaipan Greenstone belt** – unique exploration opportunity in Botswana with Rockman Resources
- ❖ Can earn **60% by investing US\$5M over three years**
- ❖ Can earn **80% by carrying Rockman to a PEA**
- ❖ **Rockman** – strong technical and practical team with in-country experience including access to cost effective exploration solutions using deep machine learning, drone geophysics and portable drilling technology





**Ken Armstrong**  
*President & CEO*

**Eira Thomas**  
*Executive Chair*

Tel: +1.604.668.8355  
[info@northarrowminerals.com](mailto:info@northarrowminerals.com)  
[www.northarrowminerals.com](http://www.northarrowminerals.com)

**Nick Thomas**  
*Community and Investor  
Relations Manager*



**NORTH ARROW**  
MINERALS INC