

NAR: TSXV



**NORTH ARROW**  
MINERALS INC

## **Kraaipan Project**

A Botswana Greenstone Belt  
Exploration Opportunity

February, 10 2026 Cape Town, South Africa



## FORWARD-LOOKING INFORMATION

This presentation contains projections and forward-looking information that involve various risks and uncertainties, including, without limitation, statements regarding the potential extent of mineralization, resources, reserves, exploration results and plans and objectives of North Arrow Minerals Inc. These risks and uncertainties include, but are not restricted to, the amount of geological data available, the uncertain reliability of drilling results and geophysical and geological data and the interpretation thereof and the need for adequate financing for future exploration and development efforts. There can be no assurance that such statements will prove to be accurate. Actual results and future events could differ materially from those anticipated in such statements. These and all subsequent written and oral forward-looking statements are based on the estimates and opinions of management on the dates they are made and are expressly qualified in their entirety by this notice. The Company assumes no obligation to update forward looking statements should circumstances or management's estimates or opinions change.

### QUALIFIED PERSON UNDER NI 43-101

Disclosure of a scientific or technical nature related to North Arrow's projects in this presentation has been reviewed and approved by John Armstrong, President and COO for North Arrow and a Qualified Person under NI 43-101.



## WHY INVEST

- ✓ **PROVEN TEAM** – Well-renowned team with a history of value creation for shareholders in the gold and diamond sectors (Eira Thomas, John Armstrong, Ken Armstrong);
- ✓ **KEY SHAREHOLDERS** – 29% ; incl Ross Beaty (7.5%), Management / Directors (15%);
- ✓ **SHARE STRUCTURE** – 28 million shares out; low market cap with **big upside potential**;
- ✓ **OPPORTUNITY** – 60 km strike length of underexplored greenstone belt within Botswana; **proven gold endowment** south of Botswana's border - Harmony's Kalgold Mine; **year-round exploration**;
- ✓ **STRATEGIC PARTNERSHIPS** – In-country expertise through **Rockman / Mineral Services**; cutting edge exploration technology developed specifically for the Kalahari terrain.





### Eira Thomas | CEO



Extensive exploration and development experience in Canada and Botswana; former officer &/or director Lucara, Suncor, Aber, Kaminak; **15 yrs experience in Botswana**

### John Armstrong | President and COO



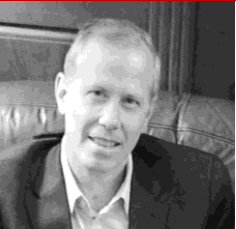
+30 years experience in mining, mineral exploration & government. VP Resources & VP Tech Services Lucara; **10 yrs experience in Botswana.**

### Kaeli Gattens | VP Communications



15 years of leadership experience in corp communications, capital markets, & public affairs in global mining; **2.5 yrs experience in Botswana**

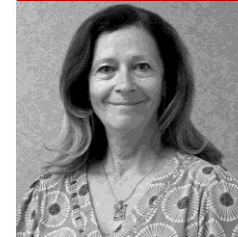
### Ken Armstrong | Chairman



25+ years exploration & evaluation experience w/ Diavik, Aber, & others. Past President NWT & NU Chamber of Mines. Director Cornish Metals.

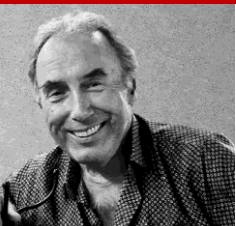


### Torrie Chartier | Director



25+ years of experience in northern mineral exploration and aviation industries

### Blair Murdoch | Director



+30 years of experience in senior management of private and public companies.

### Nick Thomas | Manager Investor Relations



20+ years experience in Canadian mineral exploration and corporate communications.

### Allison Rippin Armstrong | Advisor



20+ years Canadian, African and other international CSR & ESG experience.



Option to earn up to an 80% interest in  
Kraaipan Greenstone Belt Property, southern Botswana  
**GOLD & BASE METAL OPPORTUNITY**

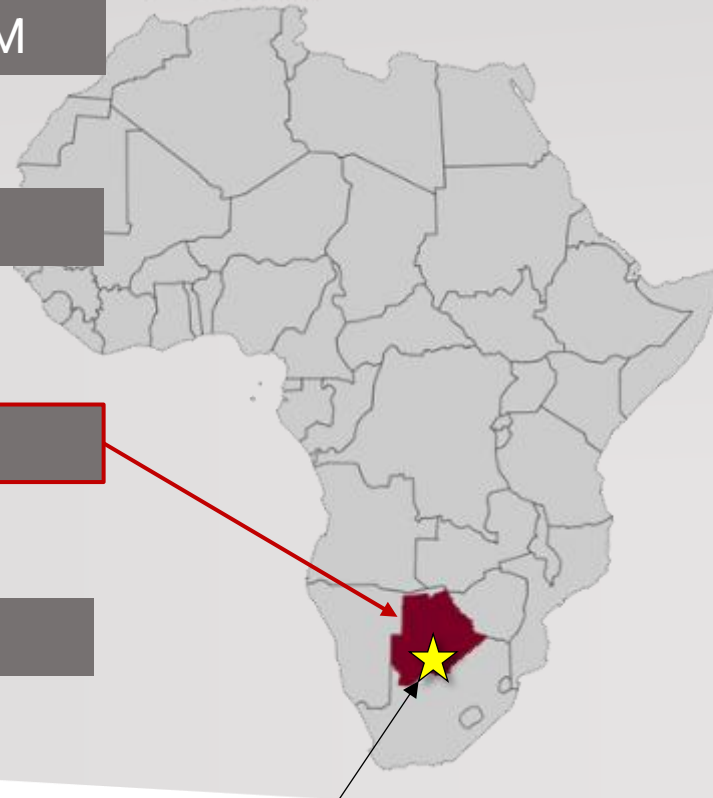
**Greenstone Belt with  
Blue Sky Potential**

WORLD-CLASS EXPLORATION TEAM

with a DISCOVERY TRACK RECORD

BOTSWANA FOCUS

BELT-SCALE OPPORTUNITY



KRAAIPAN GOLD PROJECT

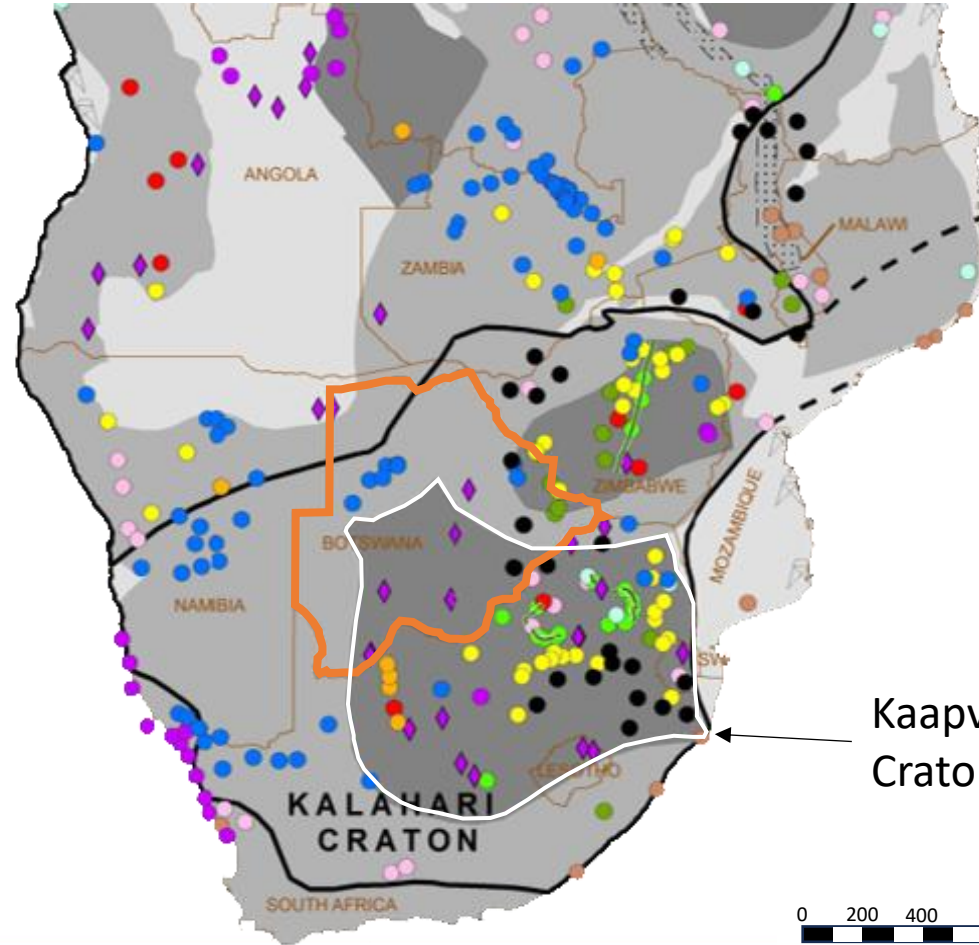
- Project generated by specialists in sub-Saharan exploration
- Deploying cutting-edge proprietary technologies to rapidly advance projects in this under-explored region
- Located in Africa's premier miner-friendly / investment jurisdiction
- **>60km of the highly prospective Kraaipan Greenstone Belt under licence** located on trend ~40km north of Harmony Gold's Kalgold multi-million ounce open-pit gold mine



The Kaapvaal craton is a prolific locality for gold, PGE and base metal deposits in South Africa...

**Legend**

- International Boundaries \*
- East African Rift
- Mineral Deposits and Mines**
  - Coal
  - Copper, Cobalt, Lead, Zinc and Associated Minerals
  - Diamonds - Kimberlite
  - Diamonds - Marine and Alluvial
  - Gold and Associated Minerals
  - Heavy Mineral Sands
  - Industrial Minerals - Phosphate and Potash
  - Iron
  - Manganese
  - Nickel
  - Oil and Gas
  - Platinum Group and Associated Metals
  - Uranium, Tin and Rare Earth Elements
- Platinum-Chromite Zone
- Interpreted Suture Zone / Major Shear Zone
- Geological Framework**
  - Cratonic Nuclei
  - Orogenic Belt/Shield
  - Phanerozoic Cover Rocks



...But less so in Botswana

WHY?


Kaapvaal Craton



- Kalahari Desert sands cover >70% of Botswana - has hindered exploration of many prospective areas.
- South Africa is twice the size of Botswana but boasts **5 times as many mines**; despite very similar geological potential.

**South Africa has 552 mines  
Botswana has just 116 mines\***

*(\*from Africa Mining IQ Website)*

 Kalahari Sand Cover

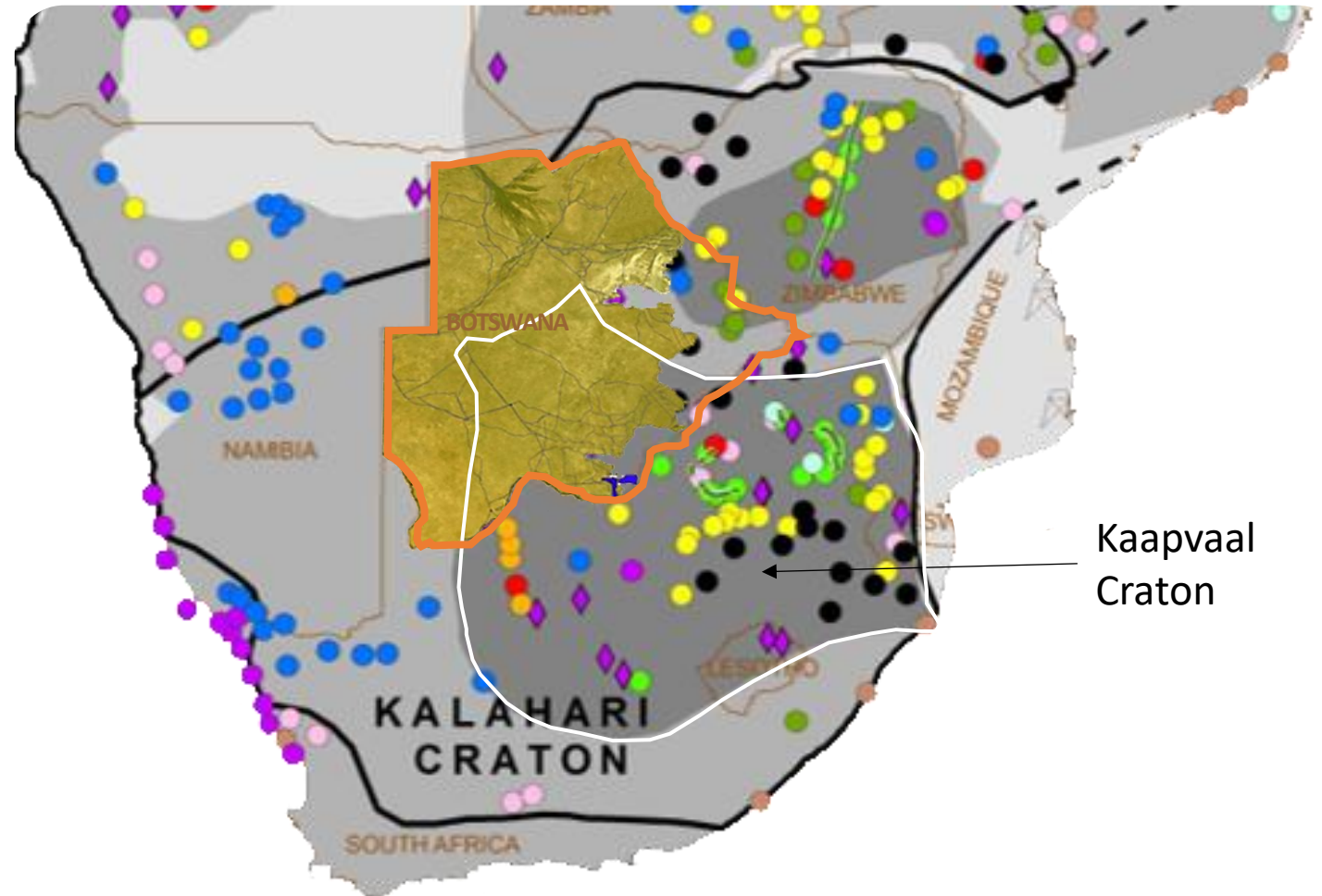
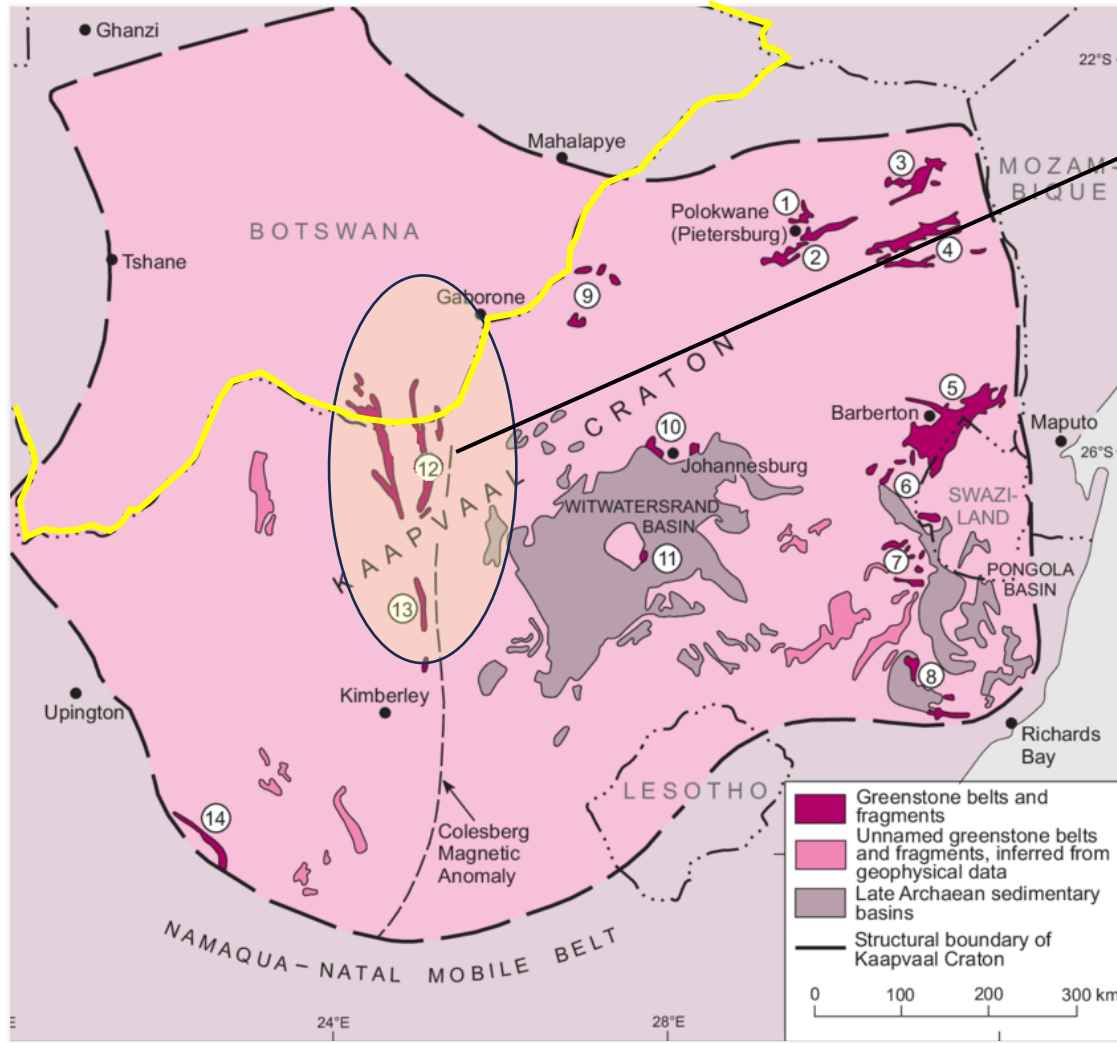




Figure credit: Carl Robert Anhaeusser, Ph.D and D.Sc. University of the Witwatersrand, Johannesburg



12

### KalGold Mine, South Africa Mining the *Kalahari Goldridge* Deposit

- Located 40 km south of the Kraaipan Project licenses, within the same greenstone belt.
- Started mining in 1995 (acquired by Harmony in 1999).
- Harmony Gold’s Mineral Resources and Mineral Reserves, June 2024
  - **P&P Reserves:** 0.645 Moz @ 1.07g/t Au
  - **M&I Resources:** 1.60Moz @ 1.19g/t Au
  - **2024 Production:** 45,815 oz at a grade of 0.96 g/t
  - **Average annual production (25 years):** 52,597 oz
  - **Cut-off Grade :** 0.58 g/tonne
- Total production plus current resources = **>3.5 million ounces.**
- Mineralized areas extend beyond Mineral Resource Limits.

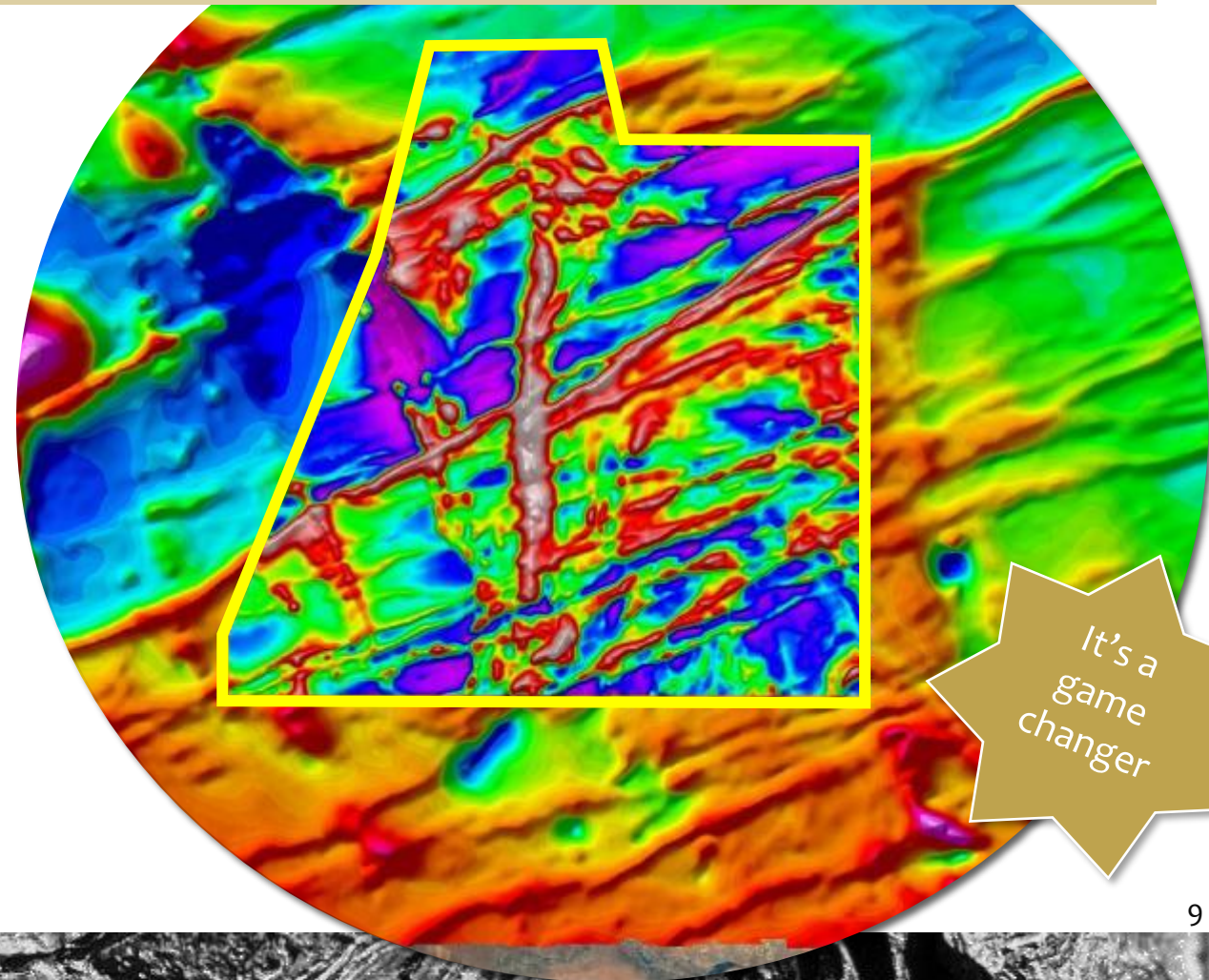
Distribution of the various greenstone belts and fragments on the Kaapvaal Craton. 1. Rhenosterkoppies; 2. Pietersburg; 3. Giyani (Sutherland); 4. Murchison; 5. Barberton; 6. Weergevonden, Schapenburg; 7. Assegaai, De Kraalen, Commondale; 8. Nondweni-Ilangwe; 9. Makoppa Dome; 10. Johannesburg Dome; 11. Vredefort Dome; 12. Kraaipan; 13. Amalia and 14. Marydale.



- Provides mag data at a resolution currently only associated with ground mag surveys.
- **Remote Mapper** can produce 1000 line-km per day of data; ground mag produces ~20 line-km of data per day.

14 years  
in the  
making

EFFICIENT, HIGH  
RESOLUTION UAV  
MAGNETIC SURVEYS



It's a  
game  
changer



Drill truck equipment - processes and equipment optimized for the Kalahari terrain



- Optimization of mobile RC drill platform reduced vehicles to two; air compressor truck tows a trailer-mounted RC drill rig; pick-up truck carries drill tubes.
- Pickup-truck-to-drill flow of drill rods; no unloading; efficient.

**Summer 2025 RC drill program spanned over 45 km of strike of KGB; 175 holes completed averaging 3 holes / day (up to 7) for a total of 4,975 m of drilling of Kalahari overburden and the underlying bedrock**

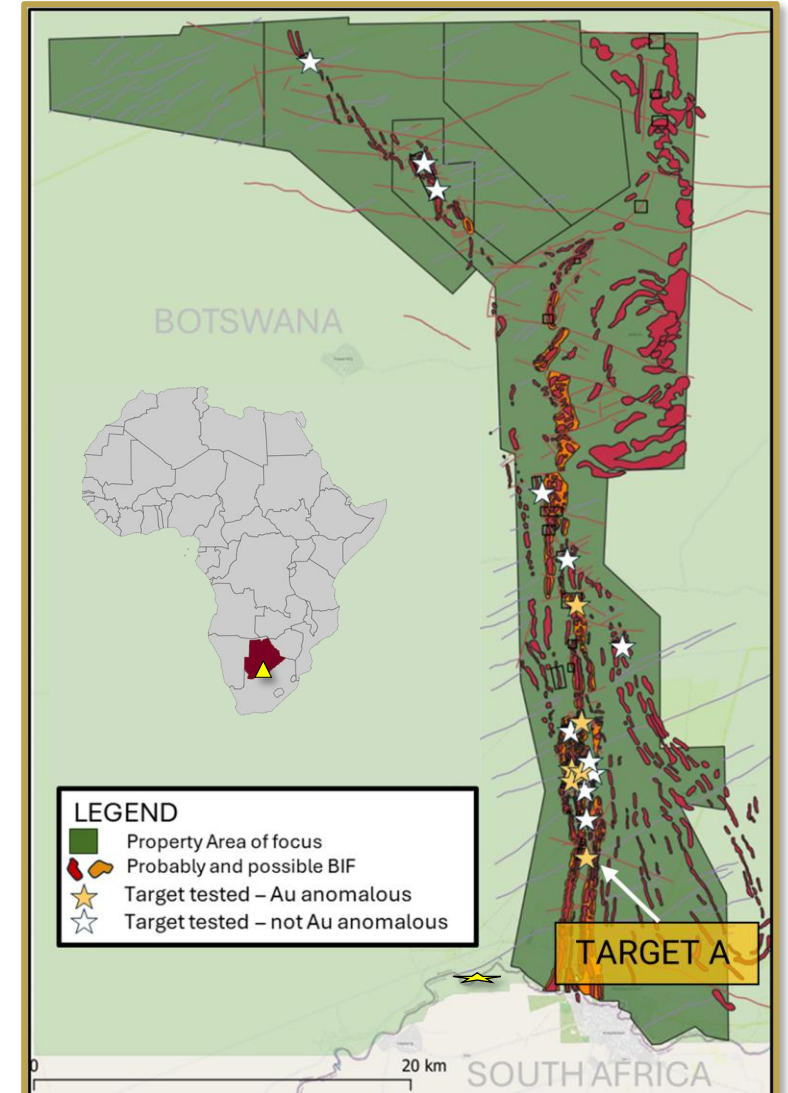


## EFFICIENT AND COST-EFFECTIVE EXPLORATION

For US\$1.2 Million and in 12 months exploration time :

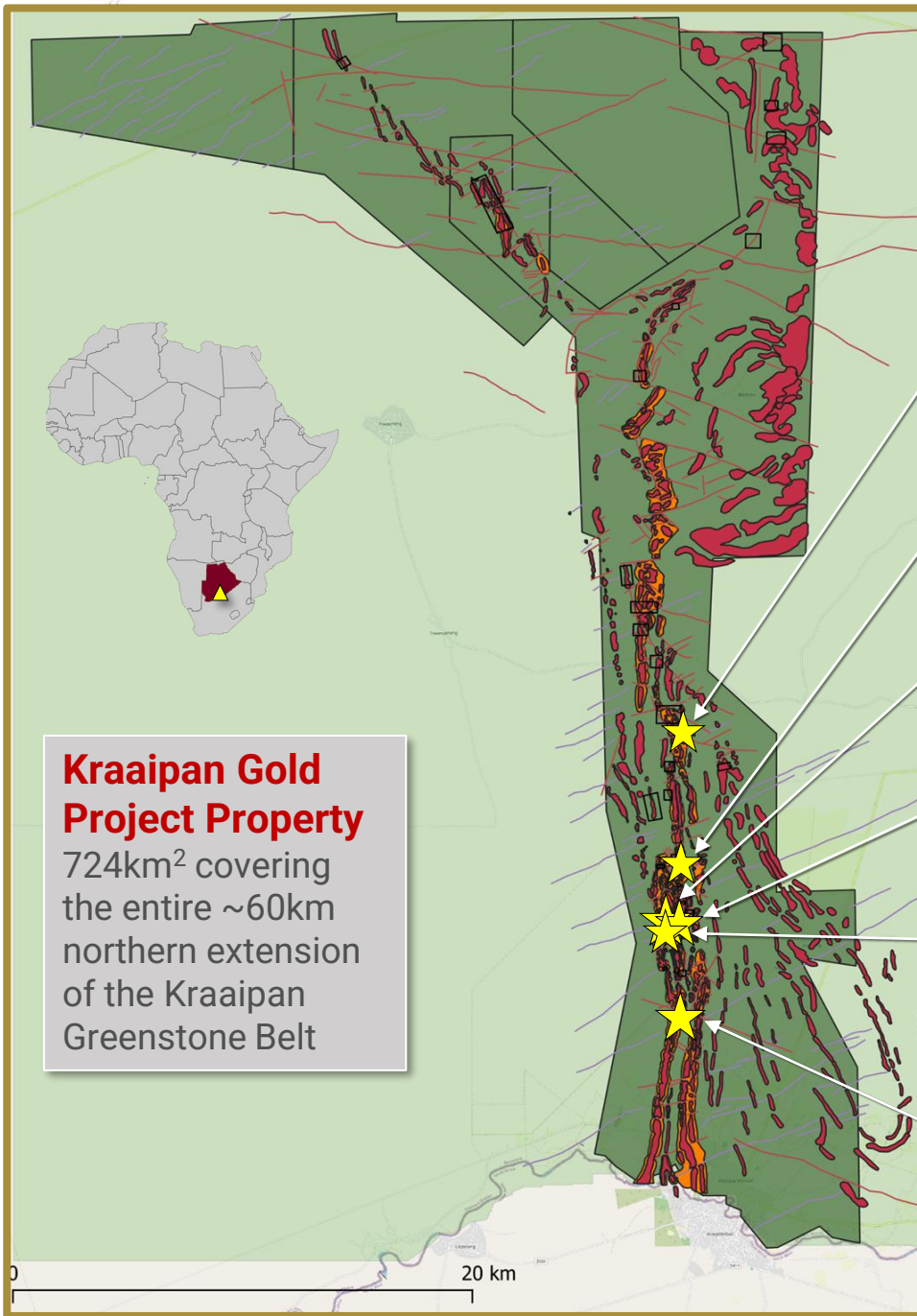
- High-resolution UAV magnetic surveys flown over 85% of the property >20,000 line-km completed;
- Mobile RC drilling platform completed 175 holes in ~9 weeks of total drilling time; average 3 holes / day (up to 7); 4,974 m of drilling;
- In-house sample preparation for verified QA/QC protocols and faster turnaround; 754 RC samples collected (bedrock and base of Kalahari);
- Approximately 45 km of Kraaipan strike length assessed;
- Six areas of anomalous gold discovered for follow-up.

Traditional exploration methods could take three or more years to complete a similar program and could cost between \$5 to \$7 M.



# RESULTS OF FIRST 12 MONTH PROGRAM

SIX AREAS WITH ANOMALOUS GOLD FOR FOLLOW UP



**Target C:** Elevated Au in overburden sample 0.24 g/t Au

**Target AE:** 0.90 g/t Au over 4 within 0.40 g/t Au over 13 m

**Target AF:** 0.43 g/t Au over 10m within 0.71 g/t Au over 3m

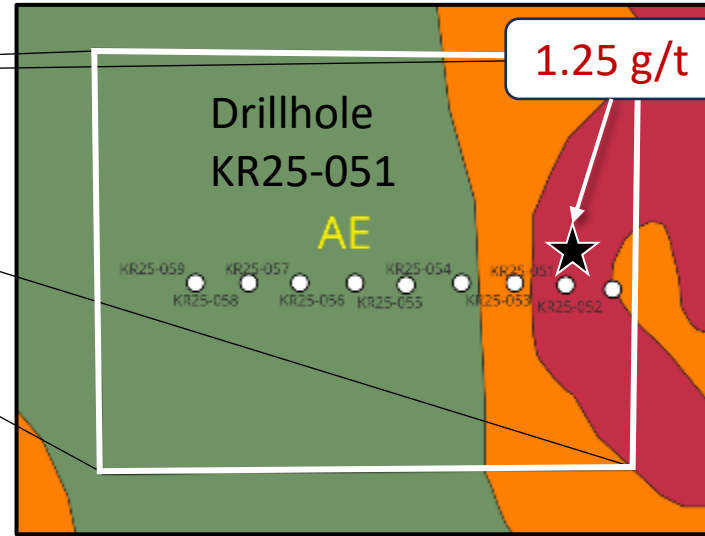
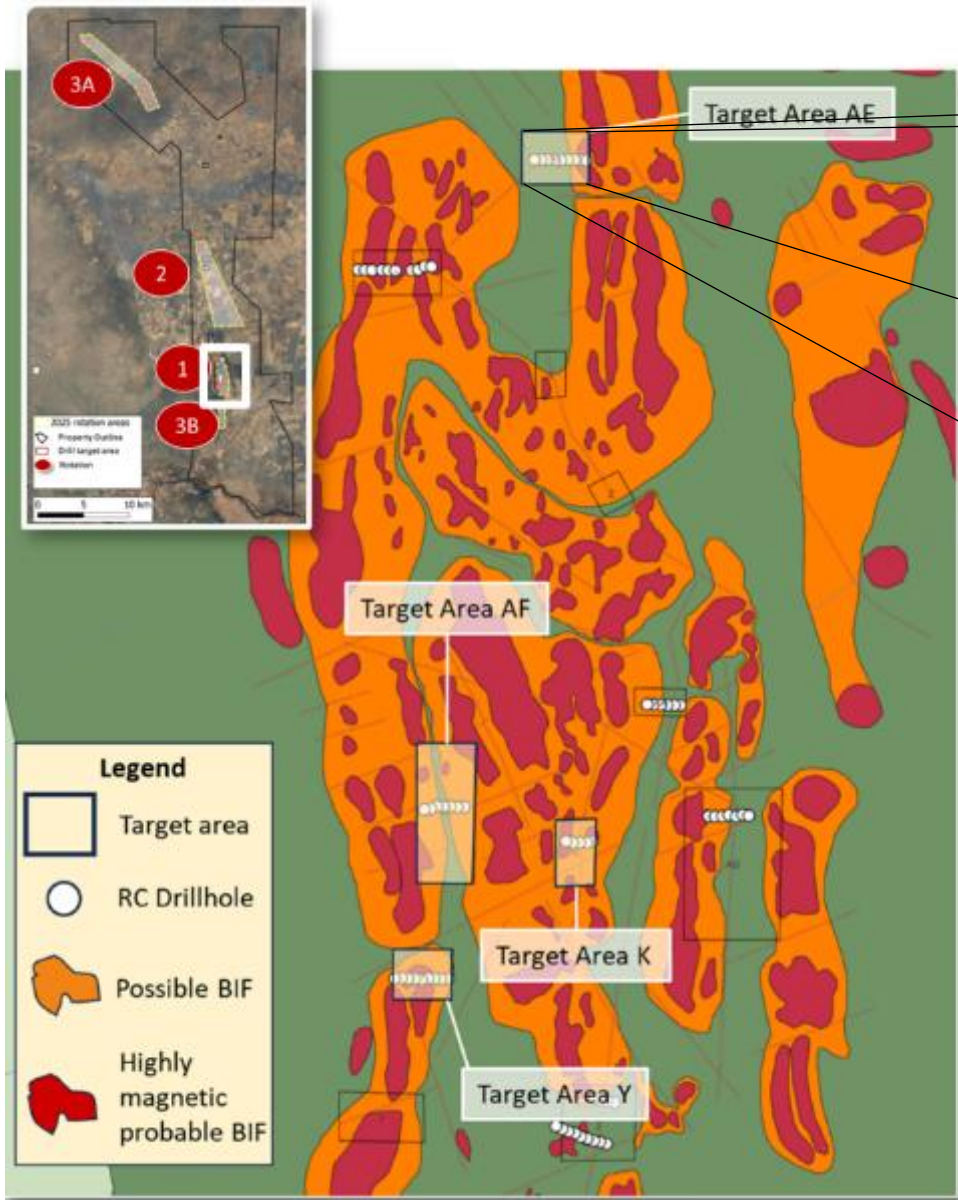
**Target K:** Elevated Au in overburden sample 0.28 g/t Au

**Target Y:** Elevated Au; up to 0.091 g/t over 6m

**Target A:** 1.56 g/t Au over 30 m from surface including:  
7.32 g/t Au over 3 m  
4.26 g/t over 4 m from 10 m



President and CEO, Eira Thomas with Kraaipan Project Geologist, Manelisi Mdze and the Remote Mapper UAV System.

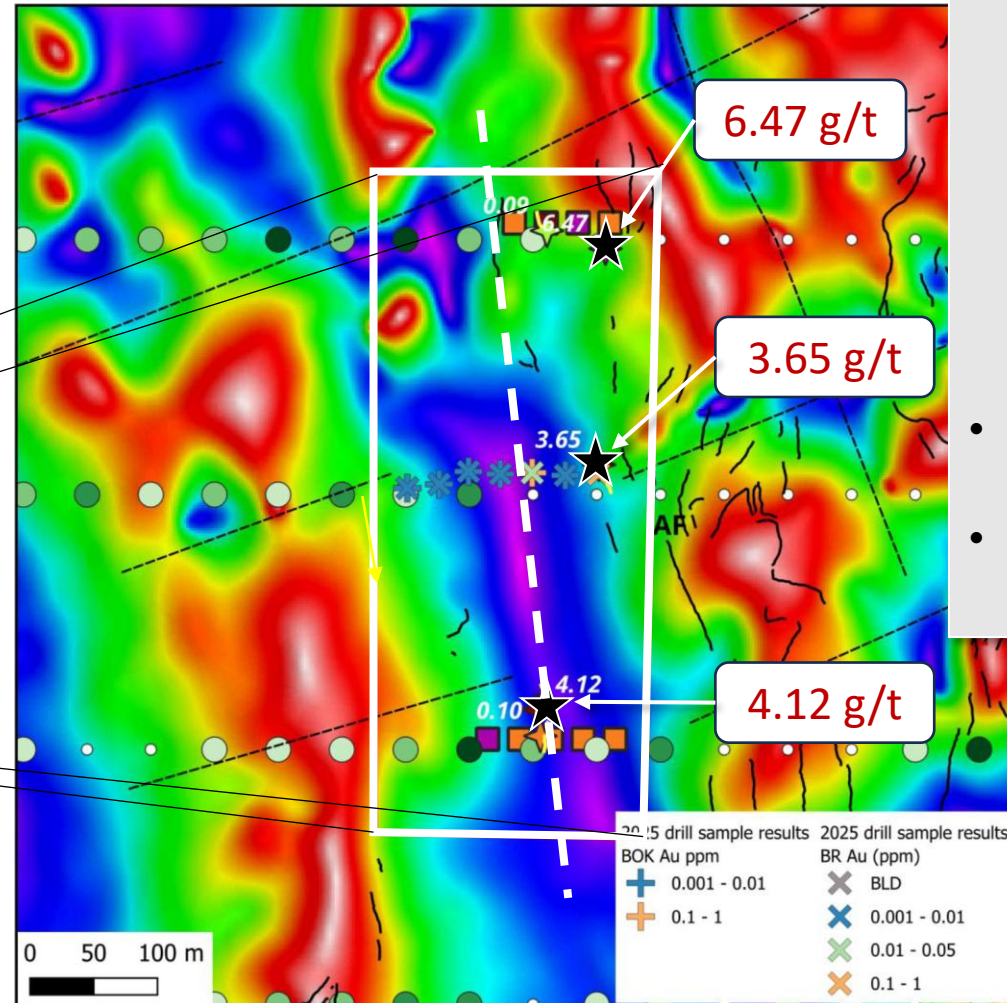
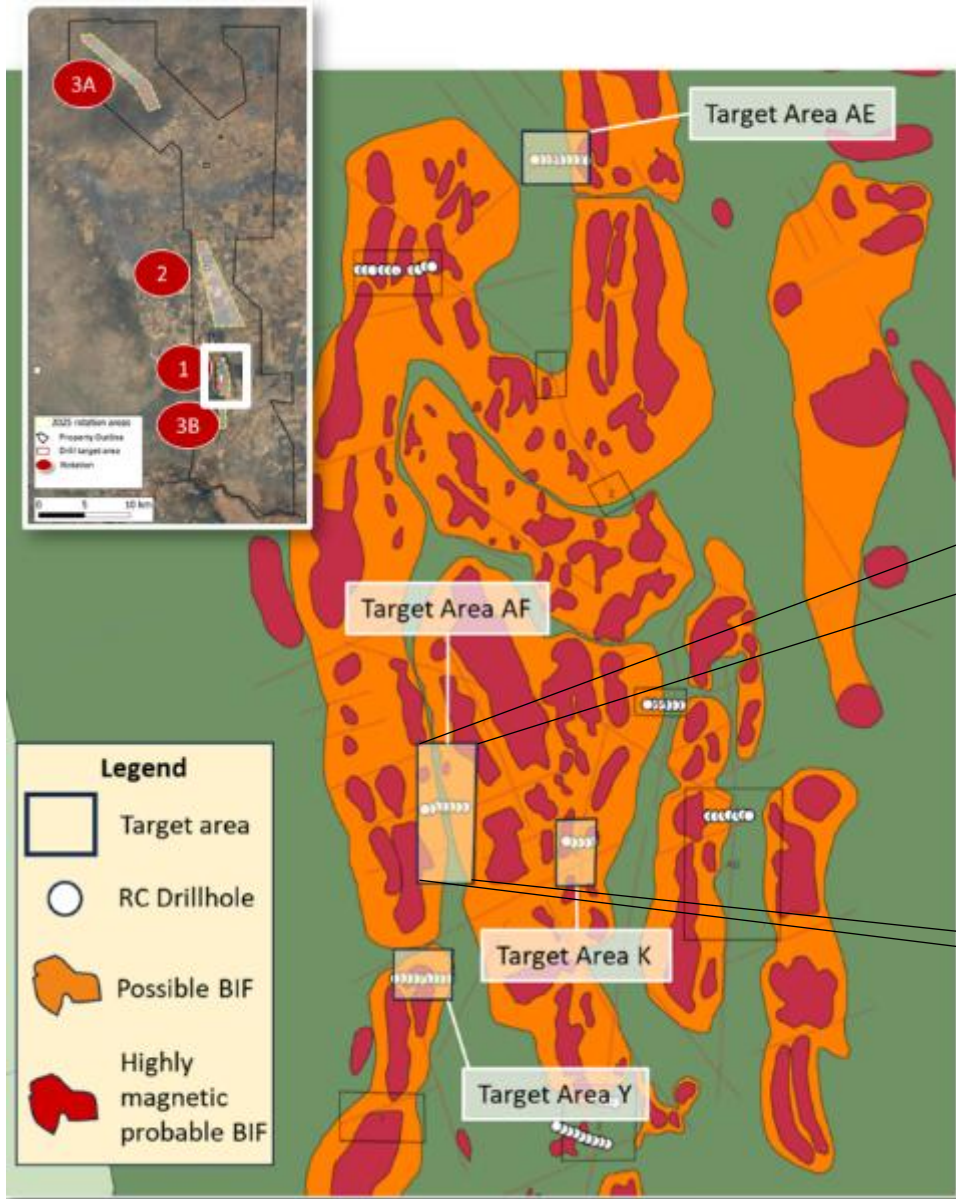


### TARGET AE - Hole KR25-051 (Vert)

- 0.40 g/t Au over 13 m including
  - 0.90 g/t Au over 4 m (ended 13 m into bedrock)
- Area averages 4 m overburden

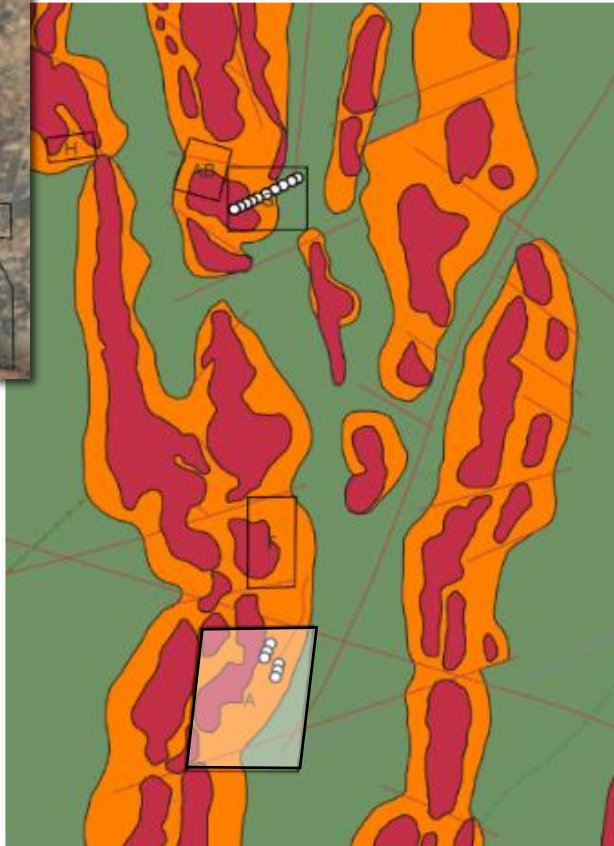


Example of subcrop found at Target AE



#### TARGET AF Hole KR25-060 (vert)

- 0.43 g/t Au over 10m including
  - 0.71 g/t Au over 3 m (hole ended at 10m)
- Near sample w/ 3.65 g/t Au
- Area averaged 9 m overburden



### KR25-155

Azimuth: 290° Dip: 60°

- **0.21 g/t over 6 m from 5 m\***

including

- **0.73 g/t Au over 1 m from 10 m\***

Host rock: ironstone

### KR25-156

Azimuth: 280° Dip 60°

- **1.05 g/t Au over 9 m from 14 m**

Including

- **2.59 g/t Au over 3 m from 20 m\***

Host rock: BIF

### KR25-157

Azimuth: 280° Dip: 60°

- **1.56 g/t Au over 30 m from surface\***

including

- **4.26 g/t over 4m from 10 m\***

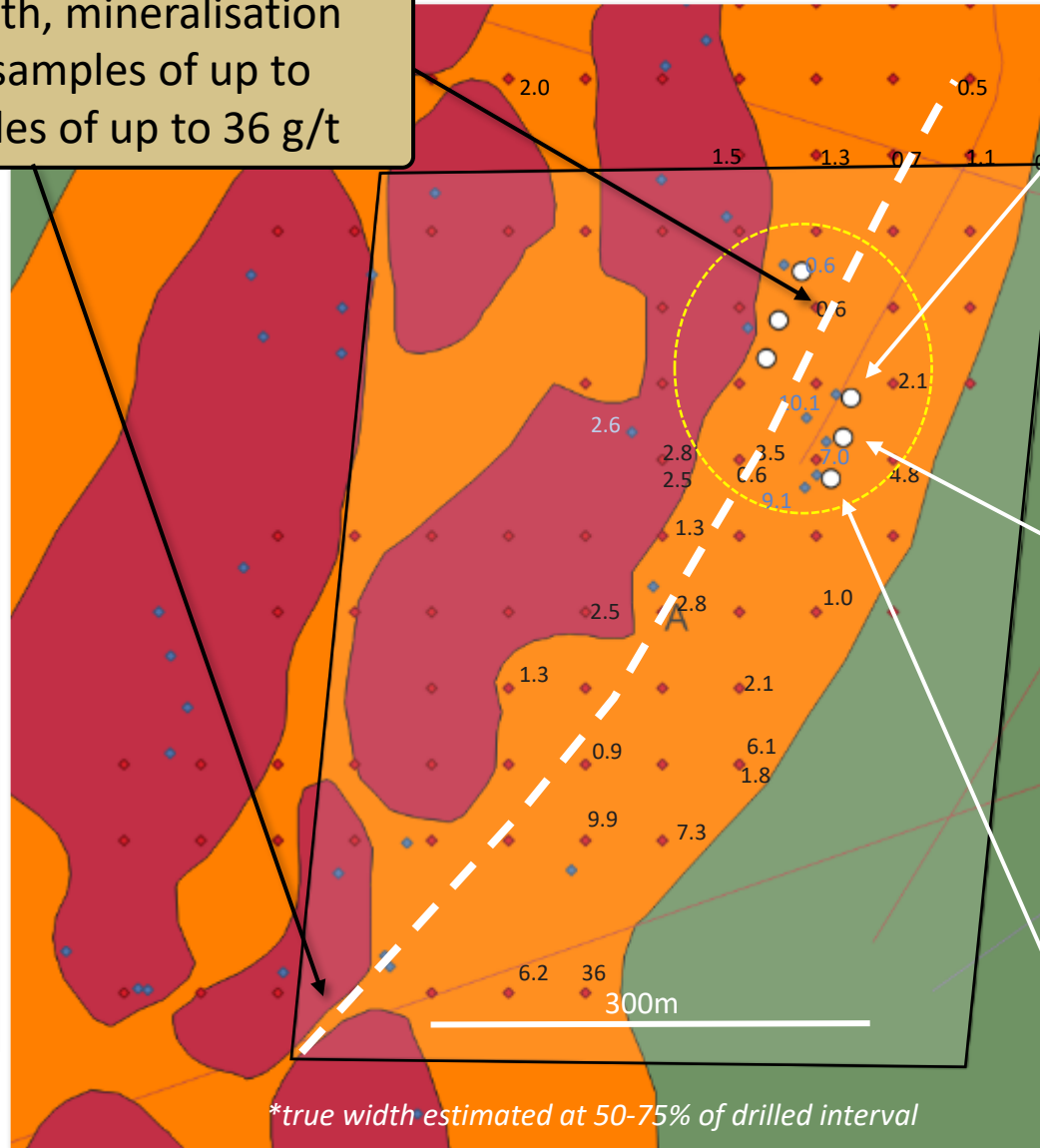
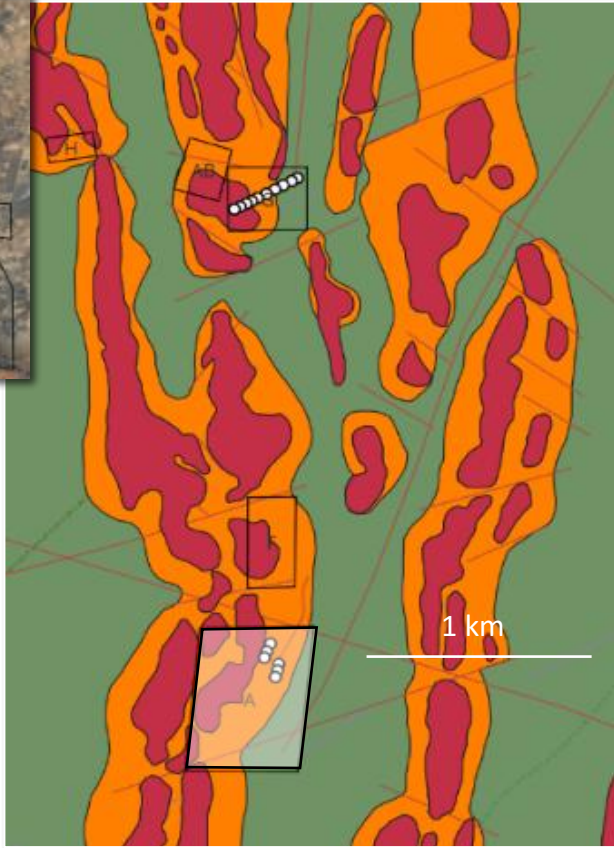
Host rock: Fractured bedrock, saprolite and phyllite

300m

*\*true width estimated at 50-75% of drilled interval*



~700 metres of strike length, mineralisation at surface with NAR grab samples of up to 10 g/t, historic grab samples of up to 36 g/t



### KR25-155

Azimuth: 290° Dip: 60°

- **0.21 g/t over 6 m from 5 m\***
- including
- **0.73 g/t Au over 1 m from 10 m\***

Host rock: ironstone

### KR25-156

Azimuth: 280° Dip 60°

- **1.05 g/t Au over 9 m from 14 m**
- Including
- **2.59 g/t Au over 3 m from 20 m\***

Host rock: BIF

### KR25-157

Azimuth: 280° Dip: 60°

- **1.56 g/t Au over 30 m from surface\***
- including
- **4.26 g/t over 4m from 10 m\***

Host rock: Fractured bedrock, saprolite and phyllite



To satisfy 2<sup>nd</sup> option NAR will spend \$1,4 US by end of June

Budget is \$2.28 M to the end of Q3; ~\$0.3 M into 3<sup>rd</sup> yr spend

- Ongoing geochemical analysis of RC and surface samples
- Hyperspectral scanning of RC rejects from select holes
- Additional surface rock sampling in target areas of interest (completed)
- RC drilling at Target A, AE, AF, K; starting with Target A planned for early March
- Remote Mapper to be flown in Q2 over remaining 15% of property in northeast; ~11,000 line km
- Core drilling planned for late Q2 into Q3; total budget to end of Q3 is planned to be \$2.28 M (inclusive of the \$1.4M)



**Target A:** altered BIF, vicinity of KR25-157; example of discordant quartz flooding, veining, evidence of weathered sulphide

**Target A:** view looking south toward from KR25-157 collar location, note abundance of material through cover sand, gentle break in slope to east (left hand portion of view)





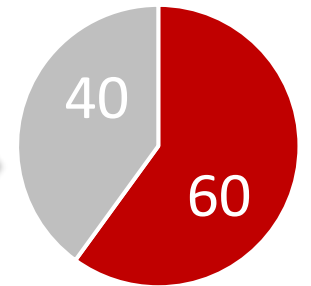
**The 1<sup>st</sup> Option Agreement**

North Arrow can earn a 60% interest by incurring US\$5M in exploration expenditures over 3 years:

- i. US\$1M in exploration expenditures by June 30, 2025 (**completed**);
- ii. An additional US\$2M in expenditures by June 30, 2026 (**\$1.6M remain to be spent**)
- iii. An additional US\$2M in expenditures by June 30, 2027 (**~\$300,000 of this to be spent in Q3, 2026**)

Upon spending the US\$5M NAR will issue 1,000,000 shares to Rockman to vest its 60% interest

First Option – NAR 60%



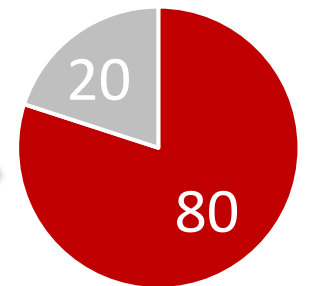
Rockman option to continue as a 40/60 Joint Venture or...  
Grant NAR the option to earn an additional 20% - the PEA Option

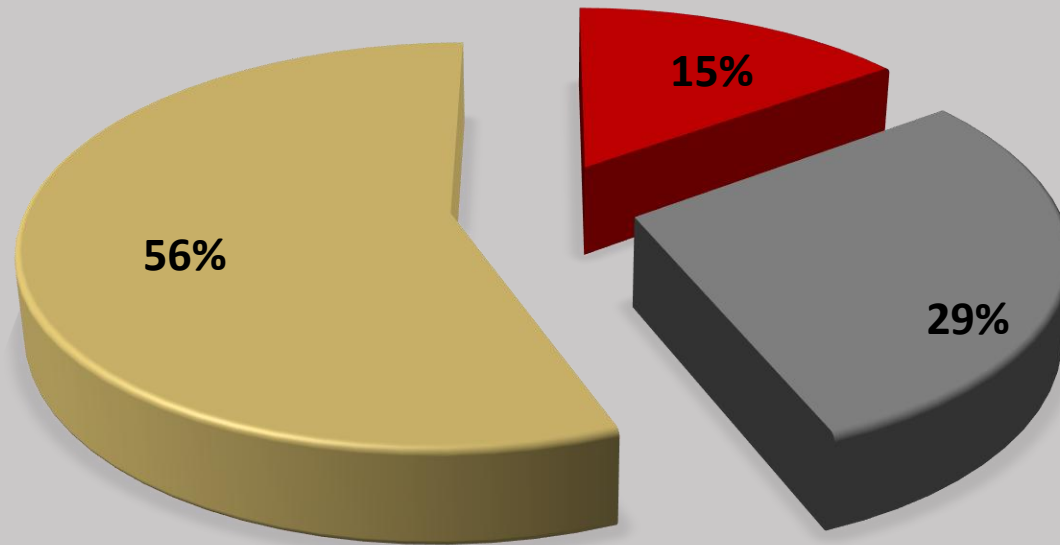
**The PEA Option**

NAR can earn an additional 20% interest by completing a Preliminary Economic Assessment (“PEA”) of the project

Upon delivery of the PEA, NAR will issue 2,000,000 in shares to Rockman to vest its additional 20%

PEA Option – NAR 80%





■ Management and Directors   ■ Key Shareholders   ■ Float

### SHARE STRUCTURE

<b>Issued and Outstanding</b>	<b>28,580,224</b>
Options	2,170,000
Warrants	5,849,200*
<b>Fully Diluted</b>	<b>39,618,101</b>

\*Warrants at \$0.30 expiring April 28, 2026

### FINANCING UNDERWAY

- Upsized to \$4M from \$3.5M on Jan. 23, 2026.
- 16,666,667 units priced at \$0.24 per unit
- 1 Unit = 1 share and 1 half warrant at \$0.36 for 2 years.
- 45.2 M shares outstanding post financing

**Eira Thomas**  
CEO

**John Armstrong**  
*President and COO*

Tel: +1.604.668.8355  
[info@northarrowminerals.com](mailto:info@northarrowminerals.com)  
[www.northarrowminerals.com](http://www.northarrowminerals.com)

**Kaeli Gattens**  
*Vice President, Communications*

**Nick Thomas**  
*Community and Investor  
Relations Manager*



**NORTH ARROW**  
MINERALS INC

TSX-V: NAR